






■ **User Manual**

<b>CAUTION:</b>		
		
The lightening flash with arrowhead symbol, within an equilateral triangle, is intended to alert the user to "dangerous voltage" and to prevent from a risk of electric shock.	<b>Warning:</b> To reduce the risk of electric shock, don't open the cabinet. Refer servicing to qualified personnel only.	The exclamation point within an equilateral triangle is intended to alert the user to important operating and maintenance (servicing).
Danger of explosion if battery is incorrectly replaced. Replace only with the same or equivalent type.		

**WARNING:** The apparatus shall not be exposed to dripping or splashing and that no objects filled with liquids, such as vases, shall be placed on the apparatus.

**WARNING:** Do not place naked flame sources, such as lighted candles on the apparatus; otherwise, there is the danger of fire.

**WARNING:** The unit should be connected to a power supply only of the type descry bed in the operating instructions or as marked on the unit. If you are not sure of the type of power supply (for example: 120V or 230V) to your home, consult your local dealer or local power company.

**WARNING:** Do not open the cabinet or touch any parts in the inner mechanism. Consult your local dealer for technical service if the opening is required.

**WARNING:** The mains plug is used as the disconnect device, the disconnect device shall remain readily operable.

**WARNING:** Take attention to the environmental aspects of battery disposal. The batteries shall not be exposed to excessive heat such as sunshine, fire or the like.

**WARNING:** Maintenance man must use the appointed screw in the rear plate.

**WARNING:** Ensure a minimum distance of 5 cm around the apparatus for sufficient ventilation.

**WARNING:** Ensure that the ventilation is not impeded by covering the ventilation openings with items such as newspapers, table-cloths, curtains, etc.

**WARNING:** Use the apparatus only in moderate climates (not in tropical climates).

**Note:** Do not open the cabinet to avoid the unit direct exposure to radiation.

**Unit Cleaning:** After the unit power is turned off, you can clean the cabinet, panel and remote control with a soft cloth lightly moistened with a mild detergent solution.

**Attachments:** Never add any attachments and/or equipment without the manufacturer consent; as such additions may result in the risk of fire, electric shock or other personal injury.

**Locating:** Slots and openings in the cabinet are provided for ventilation to protect it from overheating. Do not block these openings or allow them to be blocked by placing the STB on a bed, sofa or other similar surface, nor should it be placed over a radiator or heat register.

**Power-Cord Protection:** Place the power-supply cord out of the way, where it will not be walked on. Please take special attentions to cords at plugs, convenience receptacles and the point where they exit from the unit.

**Object and Liquid Entry:** Never put objects of any kind into this STB through openings, as they may touch dangerous voltage points or short-out parts that could result in a fire or electric shock. Never spill any liquid on the STB.

**Note:** Moisture may be formed inside the unit in the following conditions:

When the unit is suddenly moved from a cold environment or an air-condition room to a warm place.

Immediately after a heater has been turned on.

In a steamy or very humid room.

If the moisture forms inside the unit, it may not operate properly. To correct this problem, turn on the power and wait about two hours for the moisture to evaporate.

**Parts Replacement:** When the unit parts need to be replaced, user should make sure the service technician use the replacement parts specified by the manufacturer or having the same characteristics as the original part. Unauthorized replacement may put the unit in the risk of fire, electric shock or other hazards.

**Safety Check:** After all the maintenances and repairs are done, user is required to request the service technician to conduct the overall safety check to ensure the machine is in the proper condition.

---

## **Before connect with Set-Top-Box.**

After turn TV off, All cable connections must be plugged in with the set-top-box.

## **Cleaning the product exterior**

When cleaning the product, remove the power cord and wipe it with a soft dry cloth.

## **Watch TV for a long time**

Occasionally, after watching TV for long periods of time, the transition between screens and set-top boxes may not be smooth.

If you have a chance to experience a broken screen, it's a good idea to change it to another channel, and if you don't have a smooth transition, it's a good idea to do it again.

## **Changing Battery for Remote control unit**

All the batteries use a new one, and then press and hold the lid of the lid. Replace the battery with the polarity (+,-). Failure to do so may result in a rupture or damage caused by a battery rupture or cause damage to the fire, or damage to the surrounding area.. Simply connect the top part of the remote control and press it until the sound is heard.

## **Remote control angle**

The remote control can be used at a distance of 15 ° from the range of 7 to 10 meters within the range of this product receiver.

## Major features



- Operating System : Android 7.0 (ATV Android for TV)
- Combo Tuner (DVB-S2,T2/C)
- Support 4Kx2K@60fps and 4K(10bit) channels
- Support Android Leanback Launcher
- Support PVR, Time shift features
  - ⇒ USB HDD, USB memory stick, SD card, NAS
- Extended EPG and program reservation on EPG
- Support H.265 HW decoding
- Mirroring same HDMI output to Smart phone or Tablet via network
- Support DVB frontend and sharing Live TV channels to PC/Mobile Device
- Support Web server, NAS, samba, UPNP
- Support 2.4G Wire Mouse and Key board
- Support Closed Caption/Teletext/DVB-Subtitle.
- Support WIFI/Bluetooth
- Built-in WIFI & WIFI Hotspot

## **Packing contents**

- 1 x U5 PVR
- 1 x Remote Control
- 1 x HDMI Cable (1.5M)
- 1 x Adapter (12V,3A)
- 1 x User Manual
- 1 x Wi-Fi Antenna
- 1 x Bluetooth remote control with Google Voice
- 1 x SATA Cable

## Front & Side Panel



1. Red/Geen LED: Indicator to Power on/off and working status.
2. IR/LED: To support 7 Segment 4 digit LED and IR sensor.
3. USB 3.0/2.0 port: To support USB 2.0 device like USB Stick, HDD Camera etc. .
4. Smart card: To support smart card.
5. External WIFI/BT Antenna: To support WIFI/Bluetooth Antenna

## Rear Panel



1. ANT IN: turner input from the antenna
2. A/V output: To put A/V connector (enclosed A/V cable)
3. S/PDIF: digital audio output for digital audio devices
4. HDMI: output for high-definition TV which has this input
5. Ethernet: Ethernet connection for IP networking
6. RS-232: Connect to PC upgrade the S/W
7. Micro SD: To support Micro SD card.
8. 12V/3A DC input/DC Switcher.



## Remote Controller(RCU)

### Programmable Remote part

Refer as below link

<https://youtu.be/sslmeWReRgM>

How to program for TV RCU button(Example : Power button) :

1. Press "Learn" button over 8 seconds then Power LED will be dark red.
2. Face to face for both RCU and press TV RCU's power button to program to STB RCU then Power button will blink.
3. Press Power button to learn
4. Main Power LED will blink 2 times
5. Press "Lean" button to memory.
6. Now ready to control TV as Power button.

### STB part

1. POWER: To control STB power.
2. Mute: Mute of Audio
3. Snapshot: Capture TV screen
3. Resolution: Change resolution of 720p,1080i,1080p,2160p.
4. Ratio: Change Ratio of 4:3, 16:9
5. Menu: To get Sub menus.
6. Exit: Exit or Back.
7. EPG: Electrical program Guide
8. INFO(i): Information for TV channel
9. Vol +, -: To increase/decrease volume
10. CH +, -: To change channel
11. Home: Go Android Home
12. Mouse: Change Mouse mode.
13. TV: Go TV mode/Radio mode
14. Rewind: Rewind Media
15. Play/Pause: Pause/Play Media
16. Fast Forward: Fast Forward
17. Fav: Active favorite menu
18. Ter/Sat: Change Group mode for Terrestrial/Satellite Channels
19. F1/F2: function button to load SW key functions.
20. Sleep: Call timer to sleep device.
21. Timer: Call timer to record.
22. Color key: Operate different function in TEXT Screen



## Connections



### 1. Terrestrial Antenna Connection

Connect the cable from Terrestrial/Cable signal

### 2. HDMI Connection

Connect the receiver's HDMI output connectors to the TV's HDMI input connector using an HDMI cable.

### 3. Composite Video Connection

Insert a jack-to-RCA cable's jack into the A/V OUT socket on the receiver, then insert the RCA plugs on the other end into the TV's composite video and audio input sockets. Make sure to match the connector colors properly.

### 4. AV Receiver Connection

Use an AV receiver for better audio quality. Connect the receiver's SPDIF connector to the AV receiver's digital audio input connector using an optical audio cable.

### 5. Network Connection

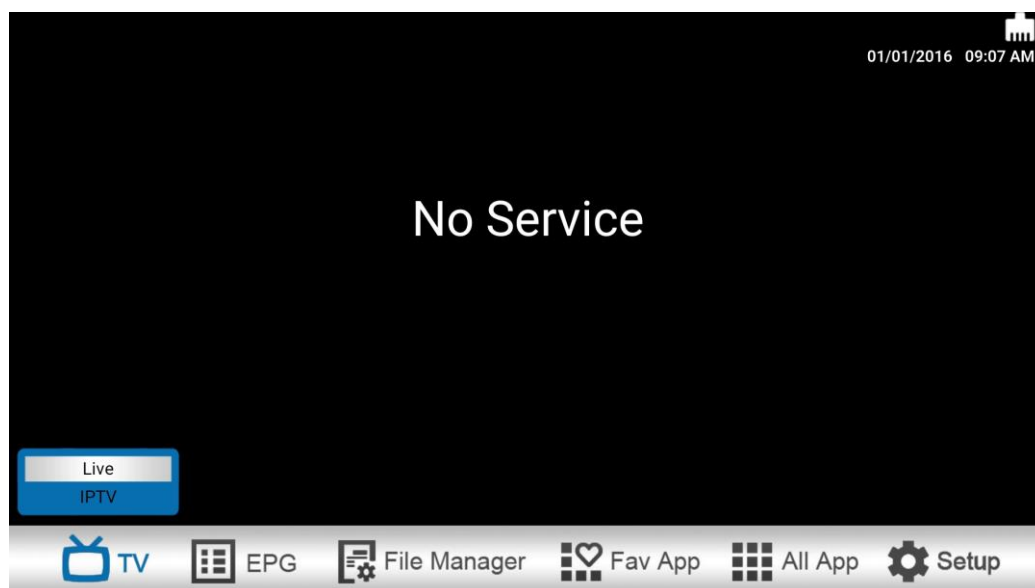
Connect the receiver LAN port to the router using a network cable. For details, please refer to the Network Settings on.

### 6. Power Up

A power cord with an adapter is provided in an accessory.

Plug the round end of the adapter power cord into the power input.

## Live TV



Press "Menu" button to use LIVE TV menu.

### TV

Live TV: To watch Live TV

IPTV: m3u/cfg IPTV channel player.

### EPG

Multiple: Multiple EPG Guide

Single: Single EPG Guide

**File Manager:** To manage files on USB/SD card, Network

**Fav App:** Favorite App list.

**All App:** Android App list and Register Favorite App list

### Setup

Config

Network

Misc

System

## Service Scan

### Terrestrial (ATSC)

Home > Setup > Config > Service Scan



1. Search Mode:

- Auto Scan: Auto-scanning based on broadcasting type & country

2. Broadcasting type (your Antenna type)

- Terrestrial/Cable: check a signal where you are

3. Country: Select a country where you are located

4. Filtering option: TV/Radio



5. Press **Red** button to scan

6. After scanning channels, press "Exit" button, then channel will be stored

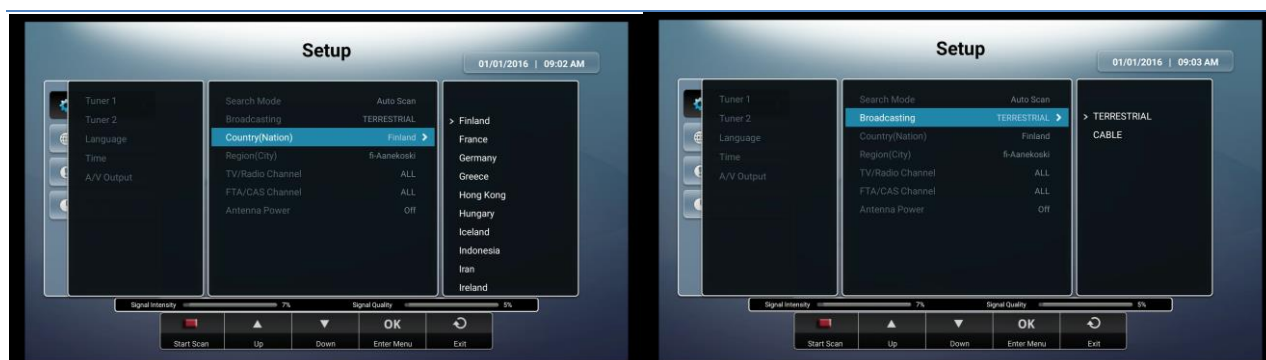
7. Go back Live TV menu and enjoy Live TV channels

### Terrestrial (DVB-T)

Home > Setup > Config > Service Scan

1. Search Mode:

- Auto Scan: Auto-scanning based on broadcasting type & country.
- Preset Scan: Scan by pre-programmed Mux information
- Manual Scan: Scan by manual Mux information



2. Broadcasting type (your Antenna type)
  - Terrestrial/Cable: check a signal where you get
3. Country: Select a country where you are located
4. Filtering option: TV/Radio,
5. Press **Red** button to scan
6. After scanning channels, press "Exit" button, then channel will be stored
7. Go back Live TV menu and enjoy Live TV channels

## Satellite

Home > Setup > Config > Service Scan



1. Search Mode:
  - Blind Scan: Scan by tuner input signal
  - Preset Scan: Scan by pre-programmed TP information
  - Manual Scan: Scan by manual TP information
2. Select Satellite for scanning
3. LNB Type: Select LNB that you are using
4. Switch: Select proper switch for antenna.
5. Press **Red** button to scan
6. After scanning channels, press "Exit" button, then channel will be stored and go to Live TV to enjoy Live TV channels

## Live TV



### 1 Channel list

Press "OK" on RCU, You can manage channel list

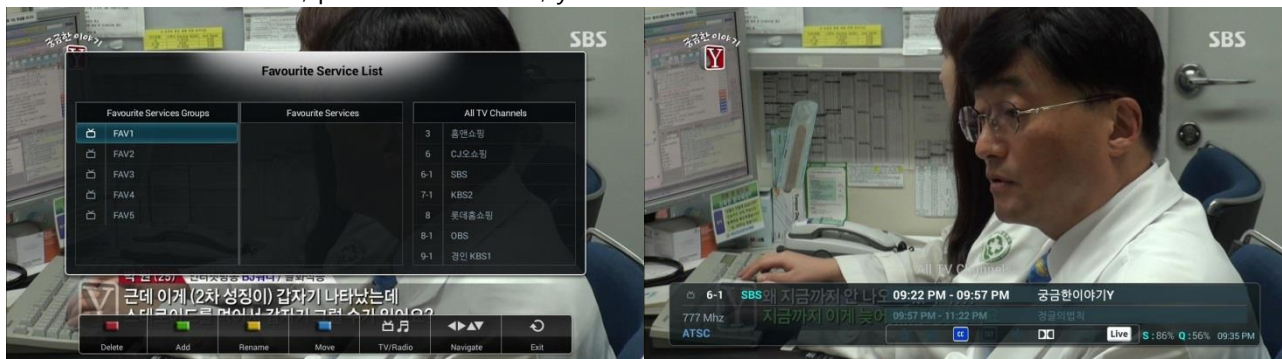
#### 1) Sort

In channel list, press "Menu" button, you can sort channels

- By Numbering
- By Alphabet
- By FTA (Free to Air)/Scrambled
- By Frequency

#### 2) Favorite List

In channel list, press "Fav" button, you can make Favorite channel list.



Move to All services and select channel to put Favorite List.

And you can rename FAV1 ~ FAV5 to other name.

After select FAV1 mode, you can keep on FAV list mode.

When you press "Info" button on RCU, you can see information for LIVE TV channel.

## Popup Menu in Live TV

Press Menu button in LIVE TV mode. Then you can see Popup Menu

1. Timer List
2. Recording information
3. Tuner information
4. Color setting



5. Sound Track
6. Closed Caption

7. Sleep timer



## Timer List

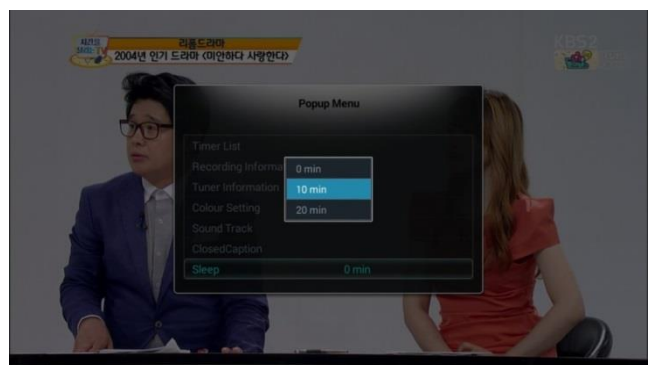
- Press Green button to add Timer
- You can select "View" or "Record"
- Set channel/time/duration/storage to record channel or change channel



**Color Setting** : you can adjust color

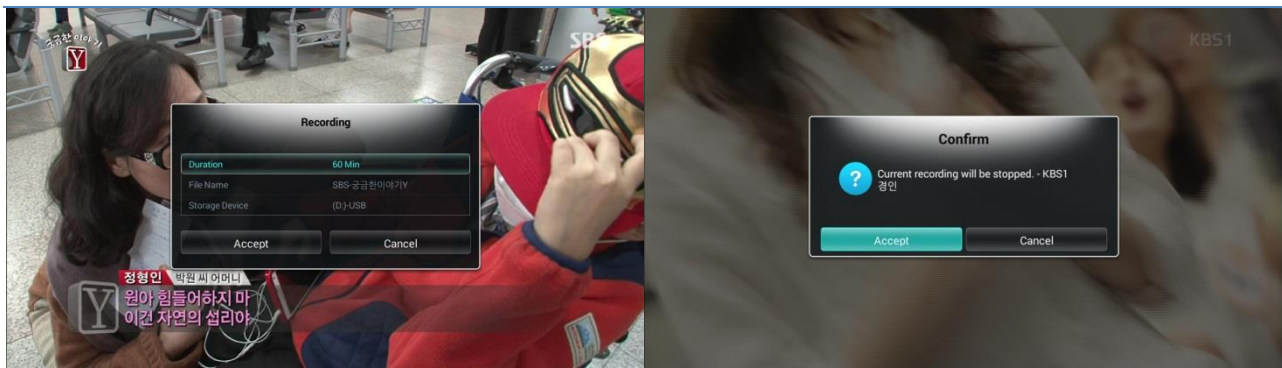


**Sleep Timer** : you can set sleep timer



## PVR

To record channel, On live mode, press "●" button then you can see recording menu  
Select option like duration, storage device. Then press "Accept" button then will start recording.

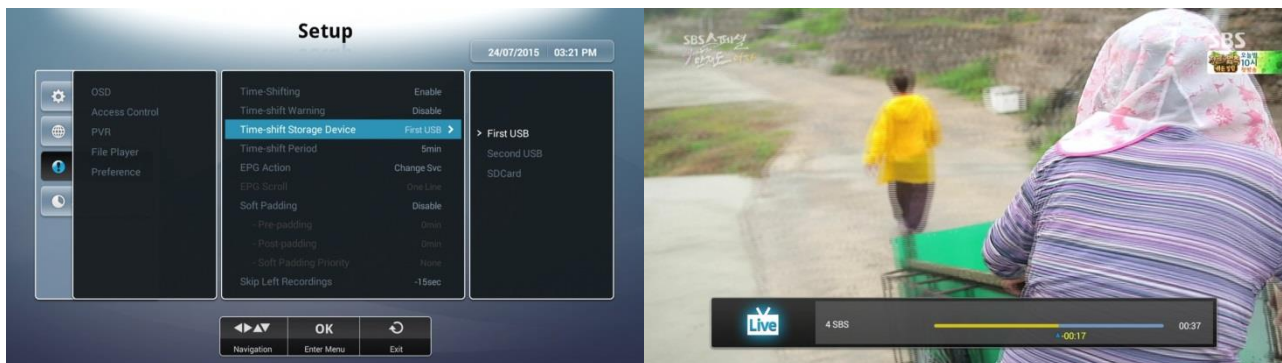


It will record on storage Device.

To stop recording press "●" button

## Time Shift

To use Time shift function, you need to designate storage.



- Enable Time Shift
- Designate Storage device.

After setting Time shift function,

To use time shift function, in Live TV mode, press "⏮" button then you can enter time shift mode

In time shift mode, you can use ⏮⏮⏮ button to control for Timeshift feature

## Closed Caption



To activate Closed caption, press "Blue" button on RCU when you see CC mark in information bar

Or use Popup menu after press "Menu" button on RCU

## Audio Sound

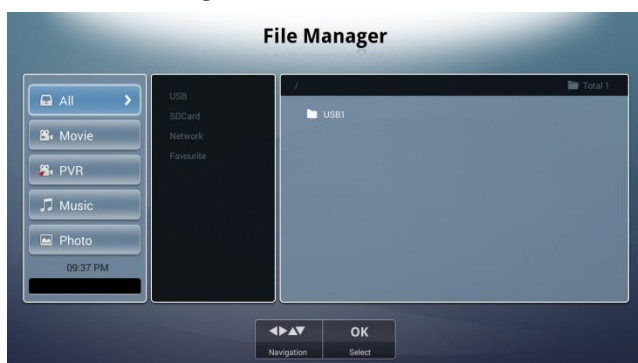


When you have multi Audio sound track, then you can see Green Sound mark.

Press Green button on RCU and change sound track.

## File Manager

You can manage files.



## Setup

### Config

#### Language

Change your language

#### Time

You need to set up your local time.

Select your time zone.

#### A/V output

**HDMI Resolution:** changing/Select HDMI output resolution.

**Screen Size Setting:** Adjust OSD screen size.

**Color Setting:** Adjust color for your TV

**Aspect Ratio:** Adjust Aspect for your TV.

### Network

**WIFI:** setting your WIFI network environment

**Ethernet:** setting your wire internet environment



**3G:** setting your 3G Dongle internet environment

## Misc

### OSD

**Help Box Display:** Help box On/OFF flag

**EPG Help Display:** EPG Help box On/OFF flag

**Local Channel Number:** LCN(Local Channel Numbering) On/OFF

## Access Control

### PVR

**Time Shifting:** On/Off

**Time Shift Warning:** warning message On/Off

**Time Shift Storage Device:** storage device selection

**Time Shift Period:** To adjust timeshift period

## File Player

**Resume Play**

**Automatic play for Next**

**Filter Default**

**Skip Left/Right contents**

**Skip Up/Down contents**

## System

### Firmware

**Information:** firmware Information

**Upgrade:** To upgrade firmware

### Backup

**Backup CH DB:** To backup channel Database

**Restore CH DB:** To Restore channel Database

### Reset

**Reset CH DB:** To reset channel Database

**Factory Reset:** To reset all data include Android part

## System Upgrade

### 1.1 From Android Setting menu.

#### Prerequisite

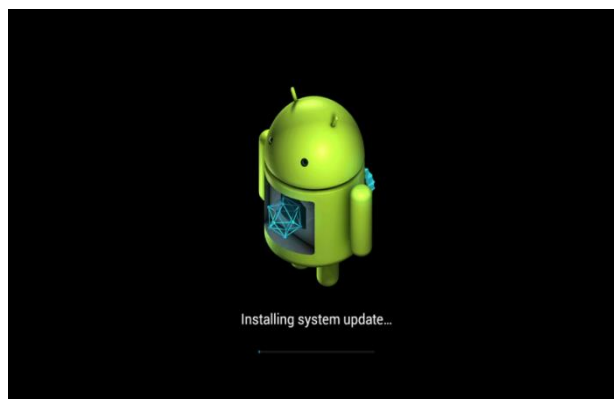
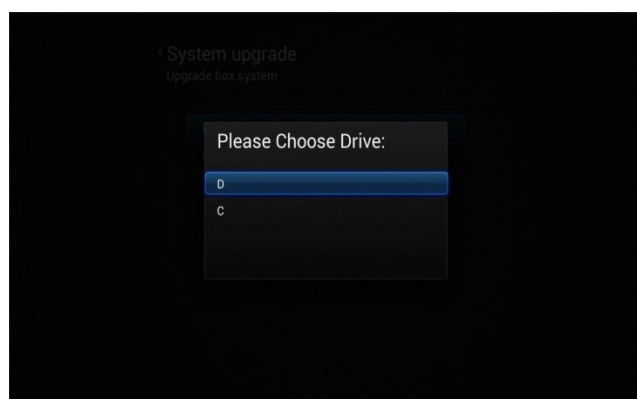
- 1) Copy Update.zip into your USB memory stick.
- 2) Insert USB memory stick on USB slot

#### Android System Upgrade



Select "Setup → System → Upgrade".

Select D: (Drive).



Upgrading procedure will start after Rebooting.

### 1.2 System Urgent Recovery

If you can't see Android UI, then you can recover box via bootloader.

- 1) Power off Box.
- 2) Copy the update zip to an USB stick
- 3) Put it in the USB slot.

#### Case 1: Press Power button on front panel on box.

- 3) Power On, at the same time, Press a **power button on front panel on box** until update screen change.

**Case 2: Press OK button Repeatedly on Remote Control unit.**

4) Power On, at the same time, Press a **OK bottom on RCU Repeatedly** until update screen change.

