

Sathero Meters

<http://www.SatheroMeters.com> ~ sales@SatheroMeters.com

How to load the SH-100 TP lists

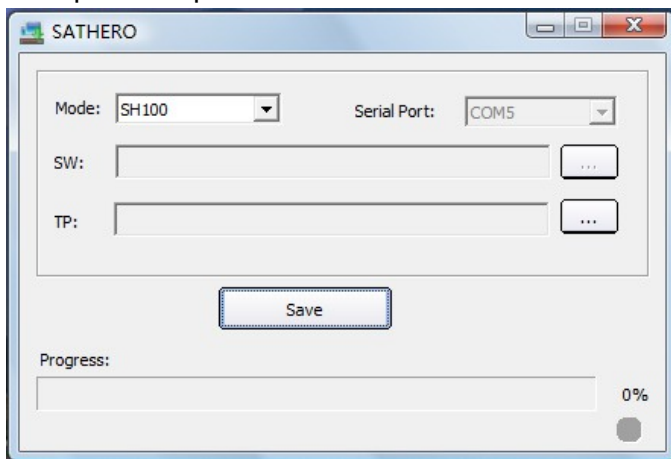
1. Edit Excel files

Satellite Name	Satellite Longitude	LNB Frequency	
ProgName(SateName)	Fre(Longitude)	SymbolRate(LocalFre1)	Polar(LocalFre2)
#49E	490	9750	10600
TP	3585	3215	H
TP	3590	3235	H
TP	3596	1950	H

NOTICE: Satellite quantity: 1~20 satellites

Each satellite: 1~20 TPs

2. Open the update tools: SATHERO

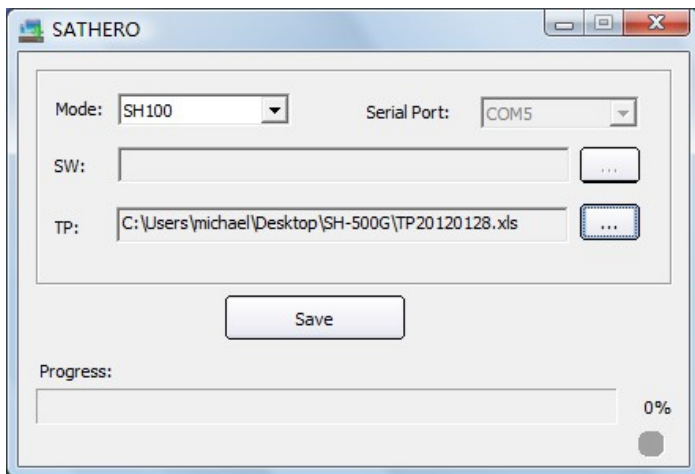


3. Select the model: SH100, choose your serial Port

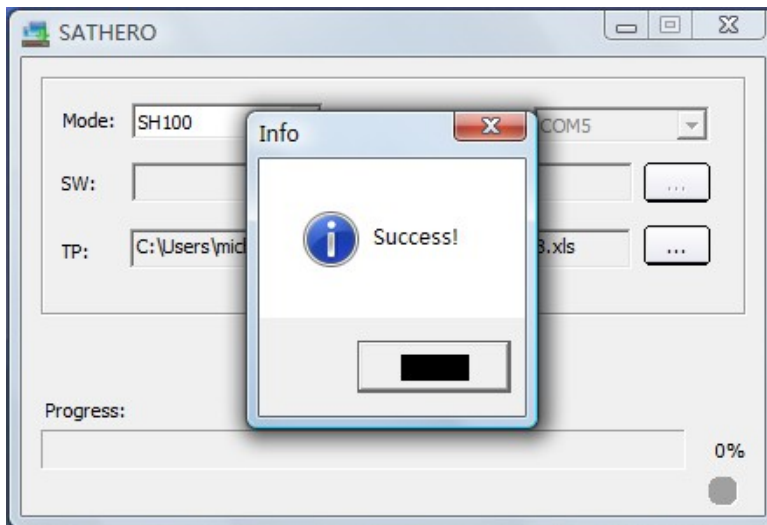
4. TP: Select the Excel file that you edited

Sathero Meters

<http://www.SatheroMeters.com> ~ sales@SatheroMeters.com



5. Click “Save” button, save your TP lists, give it a new file name, then click save



6. Connect your SH-100 Finder and PC with USB cable
7. Find the SAT FINDER Memory
(depending on your PC settings you may see a pop-up window)



8. copy your file into the SATFINDER Memory (drag and drop normally works)
9. Unplug your SH-100
10. Your meter is ready to use