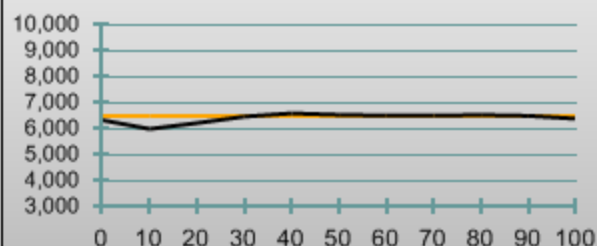
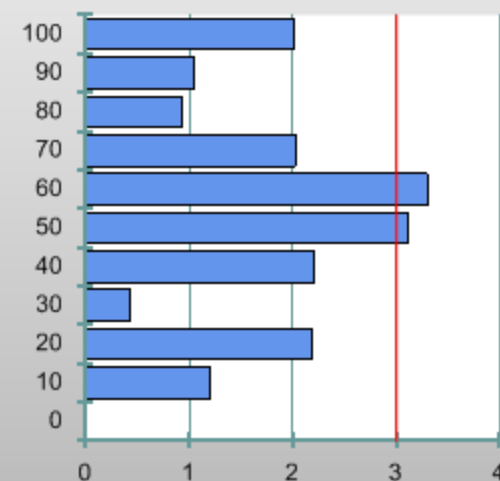




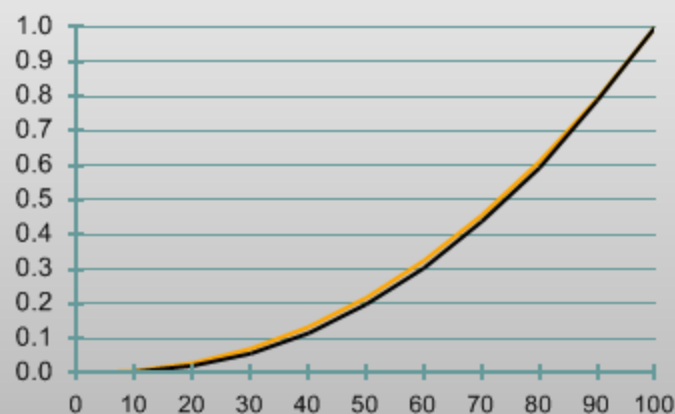
Correlated Color Temperature



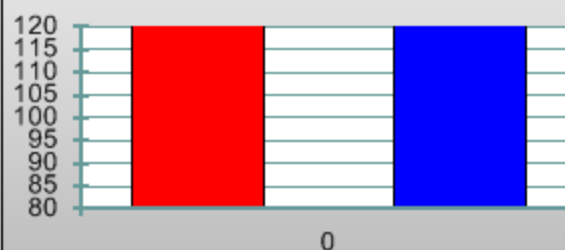
DeltaE



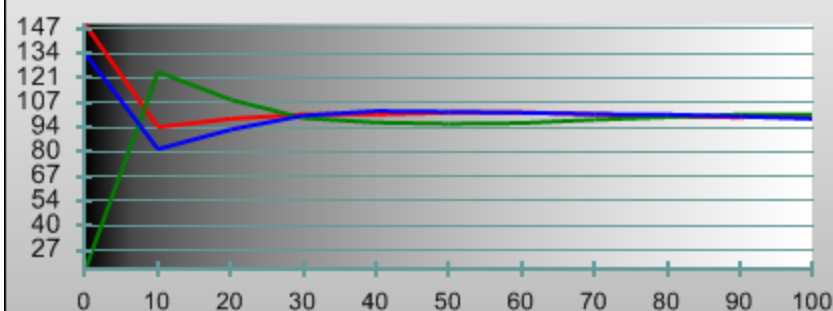
Luminance Y



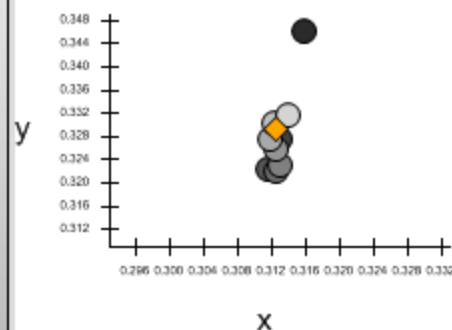
RGB Color Balance



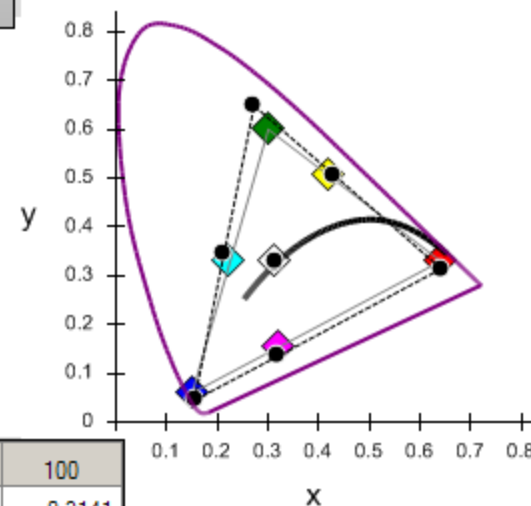
RGB Level Tracking



Grayscale Scatter



CIE Gamut



fL	0	10	20	30	40	50	60	70	80	90	100
x	0.3313	0.3188	0.3159	0.3131	0.3117	0.3127	0.3131	0.3127	0.3120	0.3123	0.3141
y	0.1916	0.3732	0.3462	0.3275	0.3223	0.3220	0.3230	0.3257	0.3275	0.3301	0.3315
Y	0.0000	0.1534	0.8305	2.1702	4.4214	7.6396	11.6547	16.8129	22.7654	30.2488	38.3522

fL	75%W	Red	Green	Blue	Cyan	Magenta	Yellow	100W
x	0.3123	0.6410	0.2721	0.1544	0.2125	0.3193	0.4296	0.3140
y	0.3262	0.3144	0.6482	0.0451	0.3446	0.1356	0.5067	0.3315
Y	19.8168	4.4885	11.7716	0.8704	13.8791	5.4875	18.5581	38.3118

Display Type:
MODE_LED_BACKLIGHT
Make: Model: 55sv670u
Input: HDMI 1080p HD
Session2.cdf
Viewing Distance: 65 - 106

Meter: x-rite CalMANv3 Enhanced Chroma5
Source: Optical player or video generator (manual control)
White Point: D65, HD Rec709