

QQ Box ProgDVB Manual

Quick Start for QQ Box and ProgDVB Ver. 6.25.02
Microsoft Windows Vista

Thomas Hillard – Author
12-19-2009

Hardware Installation:



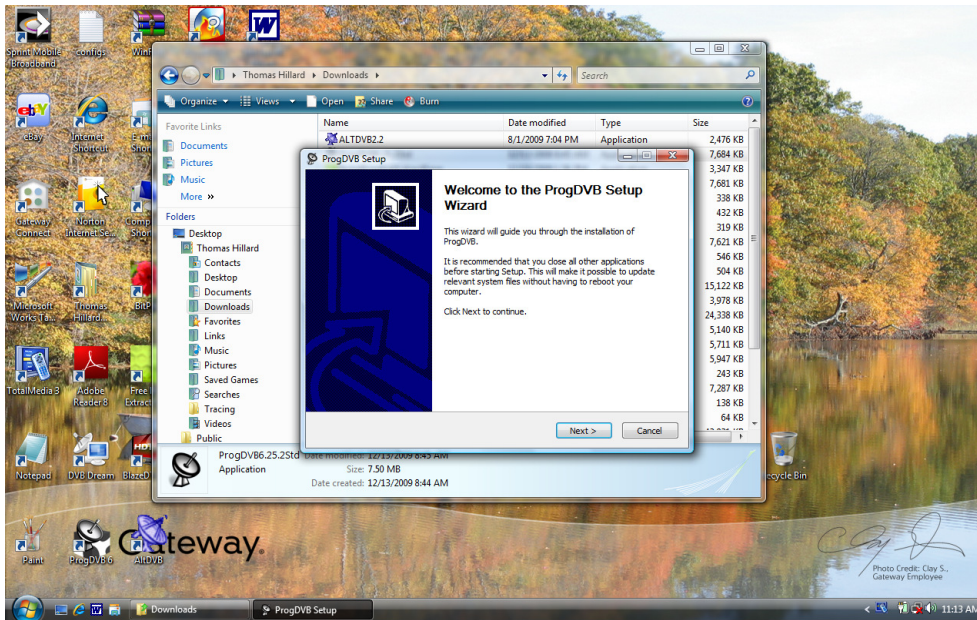
Connect the LNB cable from the dish to the “LNB In” on the QQ Box.
Connect the Laptop to the QQ Box with the USB Cord.
Connect the Power Supply cord to the QQ Box.
Do not connect the QQ Box Power Supply to the power yet.
Boot the PC.

Go to www.progdvb.com and download the latest version and install on your PC.
Run the download file.

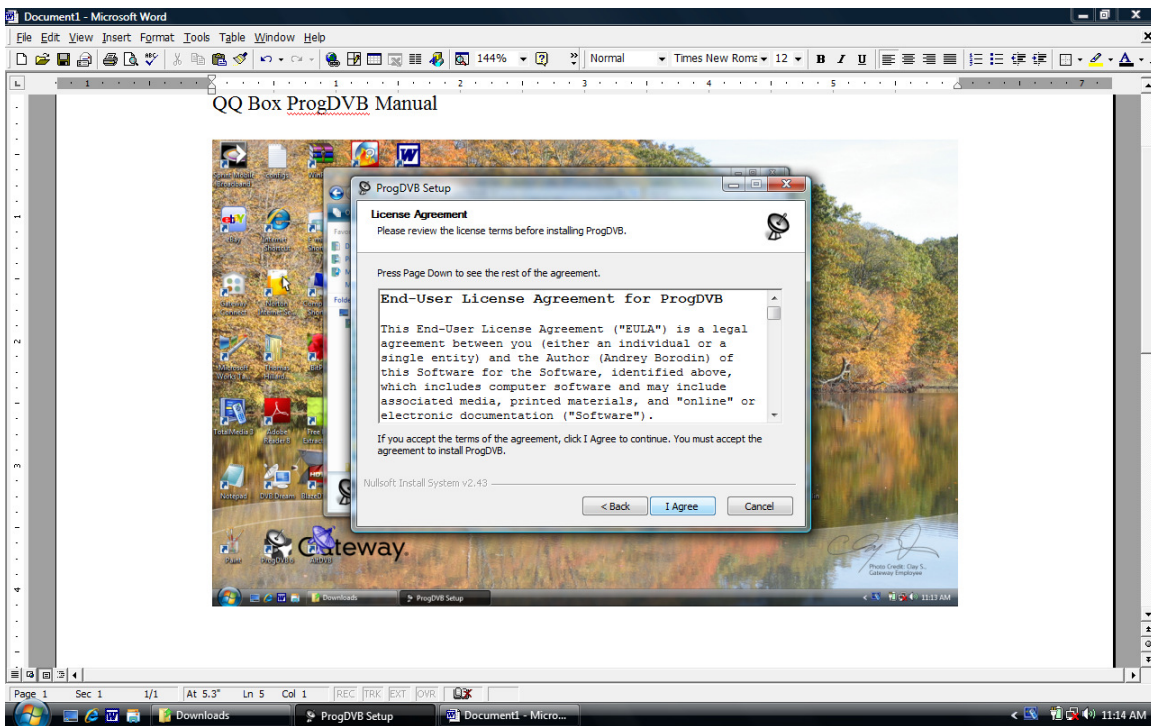
With the Install CD provided with the QQ Box, Run the Install software but only select “Install Driver”

Or go to the LME website Support and download the driver that matches your device.

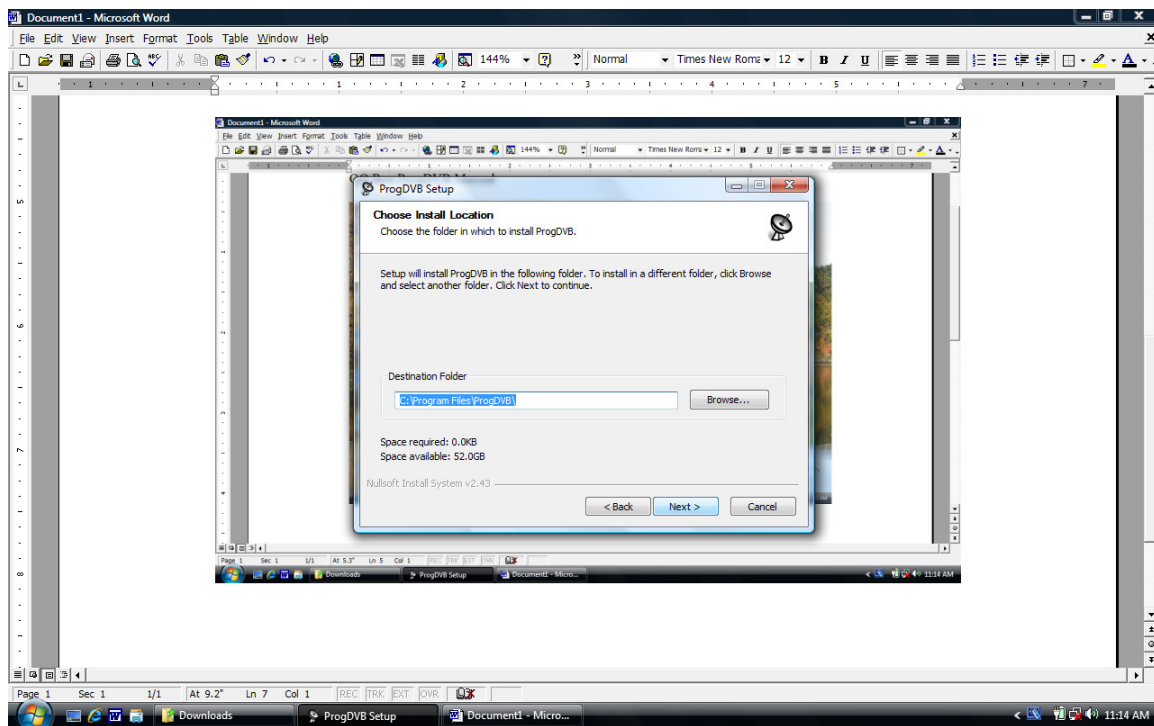
<http://www.leaguerme.com/English/ShowArticle.asp?ArticleID=62>



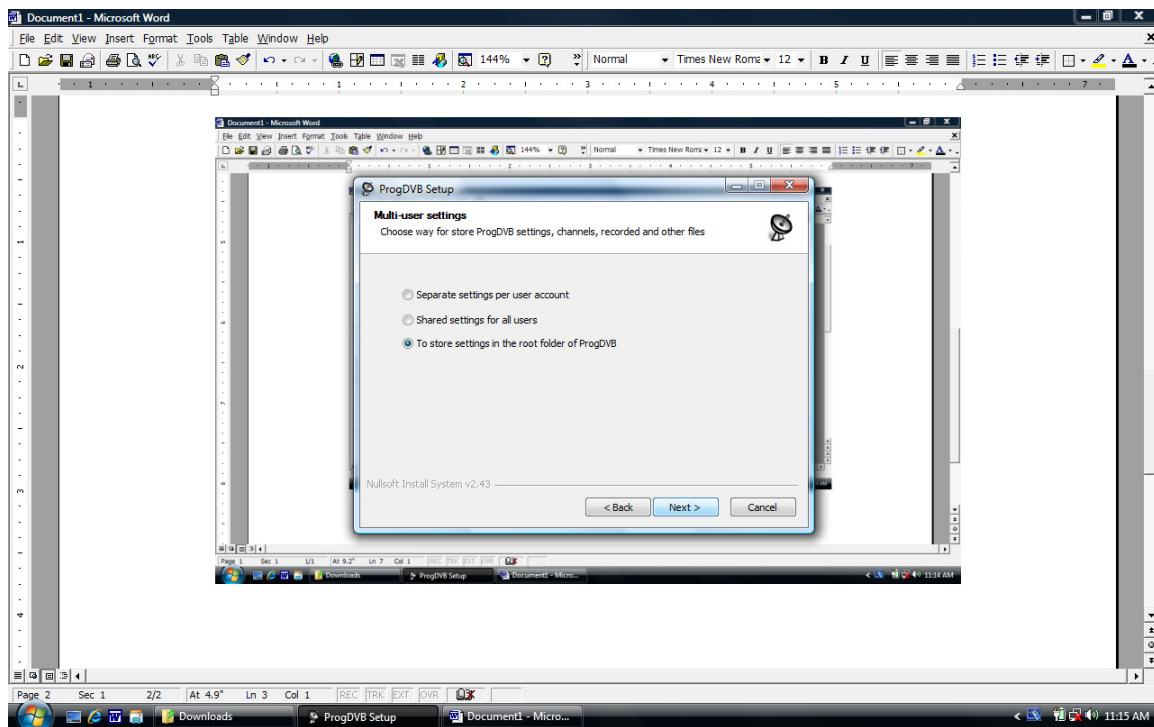
This start up screen will appear, click Next.



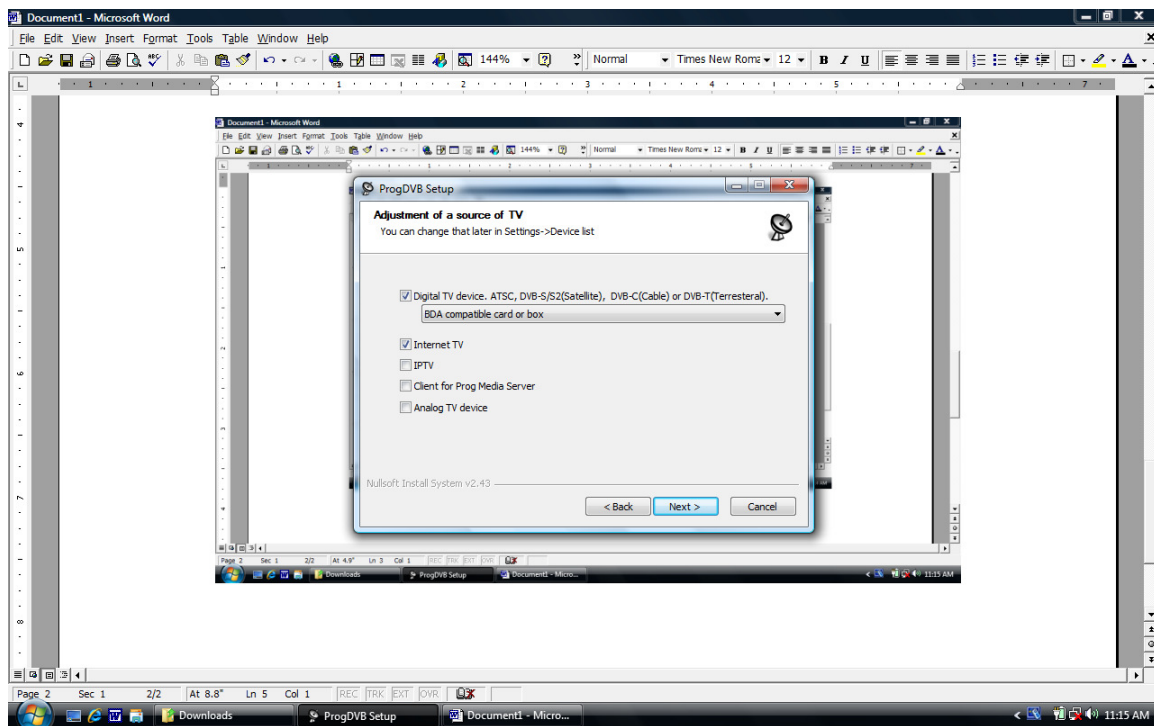
Accept the software license to continue.



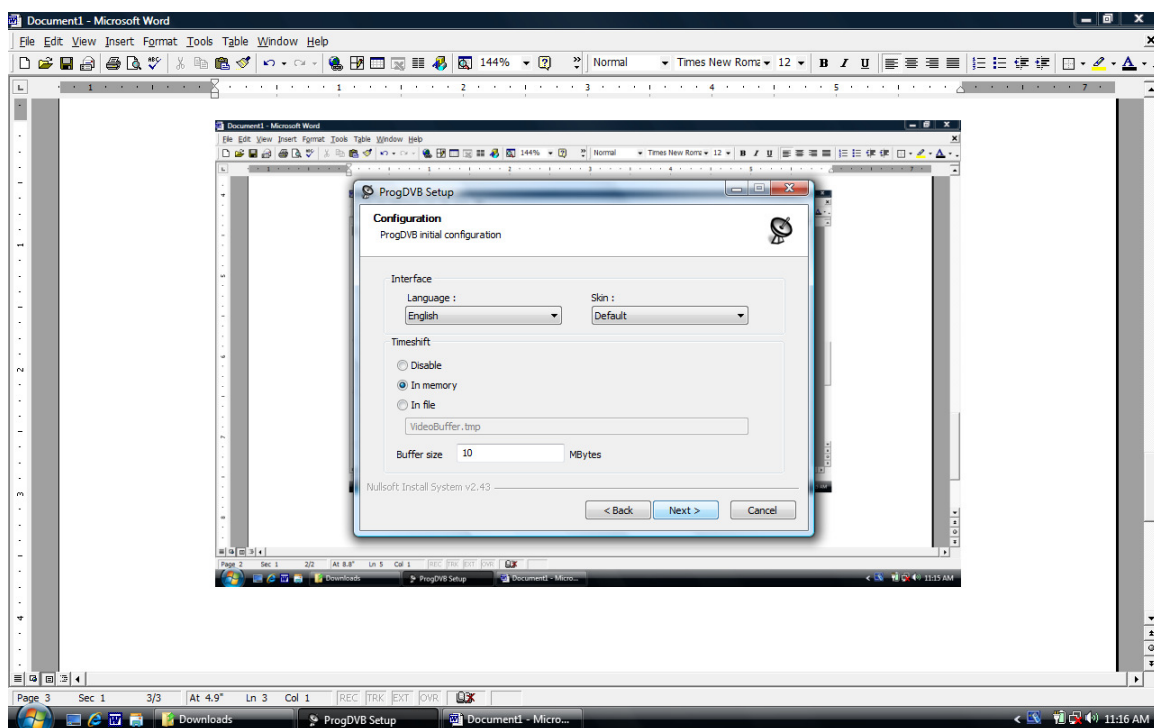
This allows you to install the software in the path you prefer, best to select default. Click Next.



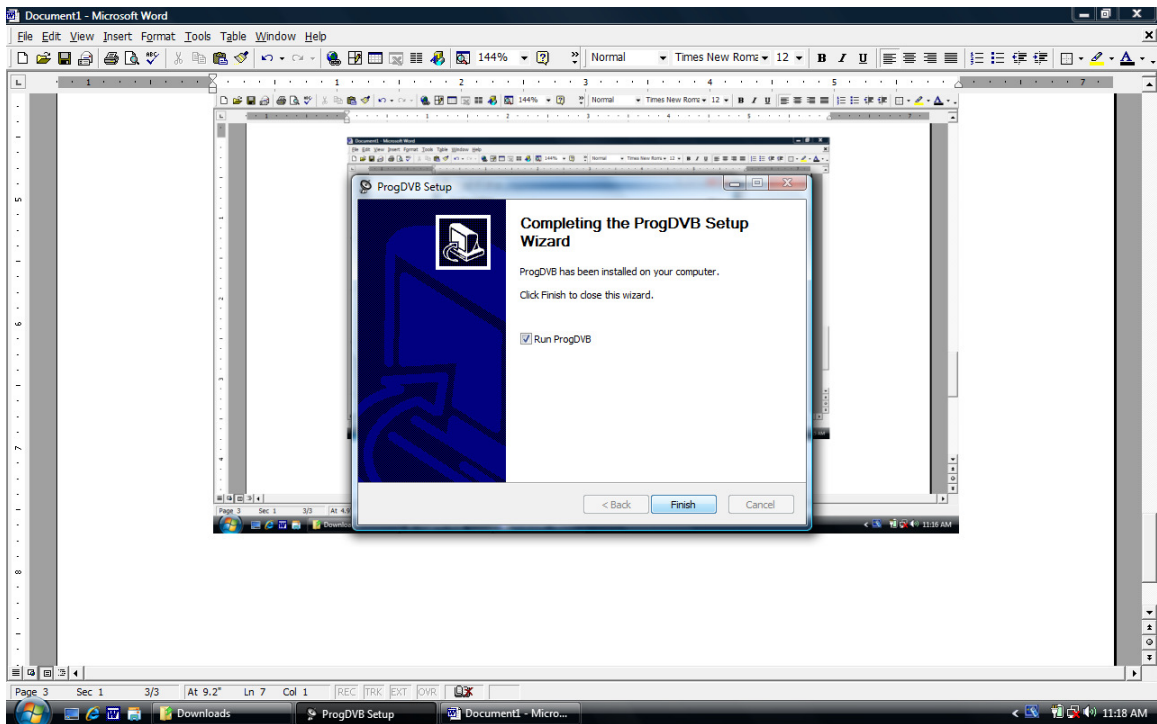
For most instances you will select the default, click Next.



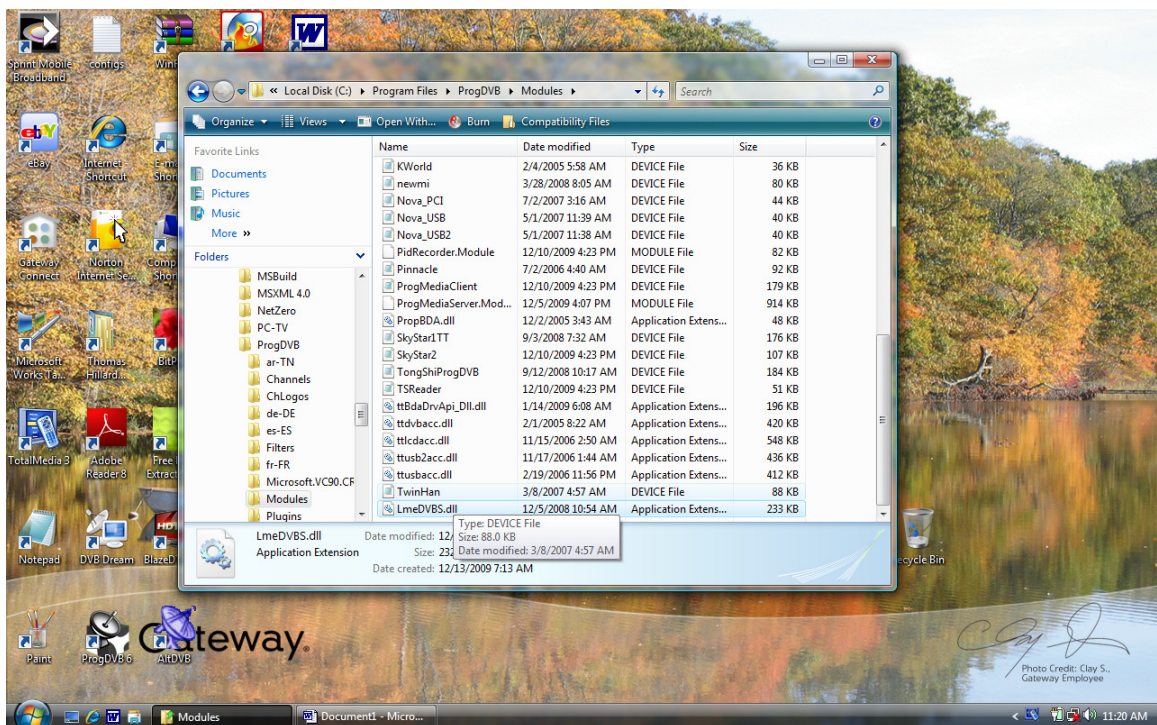
For the current QQ Box driver you select this default. Optional to select Internet TV.



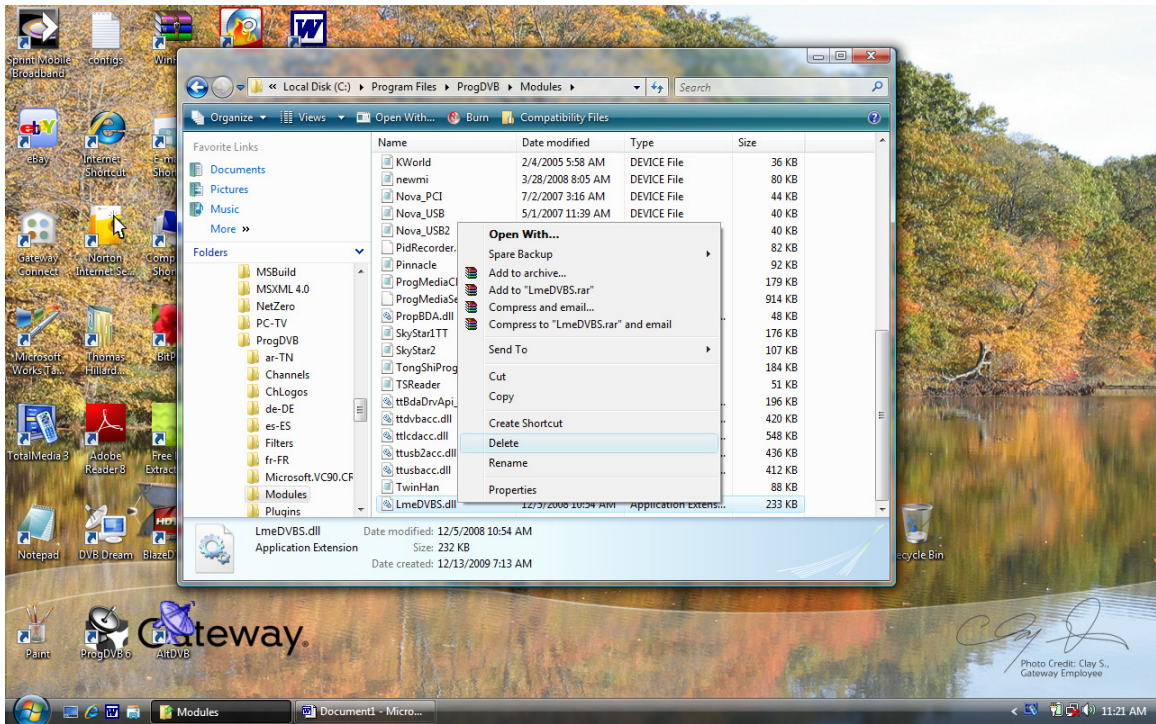
Select your language and Skin, click Next.



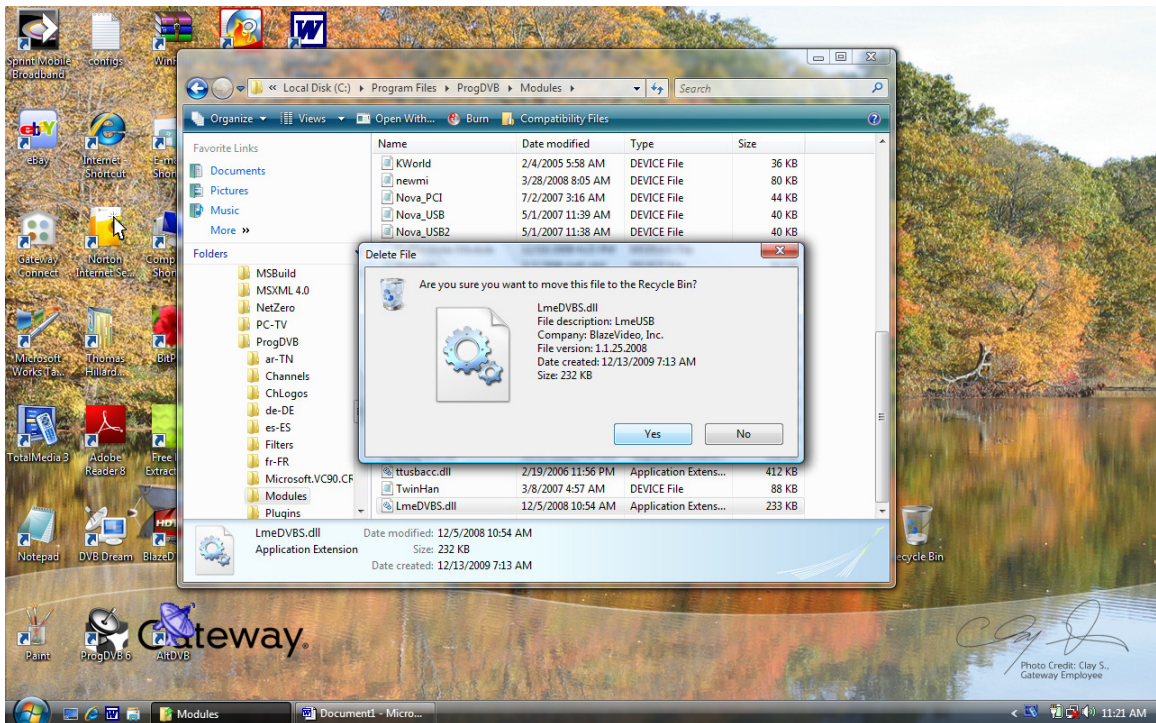
Select Run ProgDVB and click Finish.



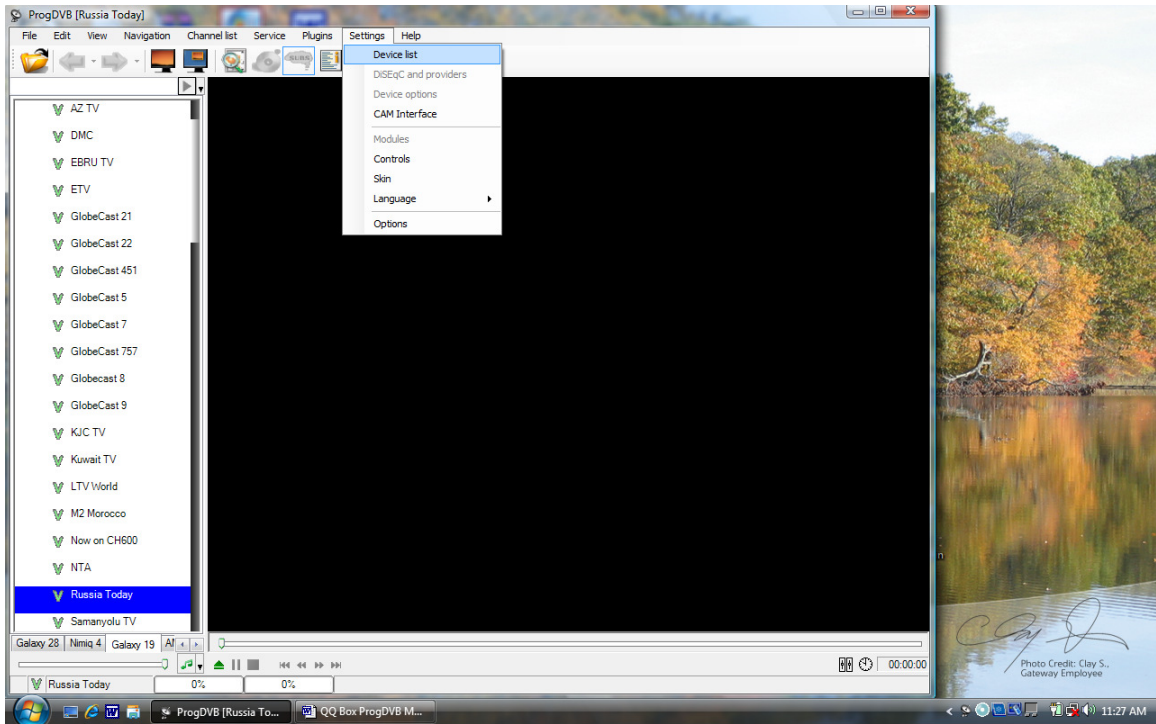
If you have installed this file on your PC, remove it. It is not needed. Carefully follow the path as shown in the upper windows box.



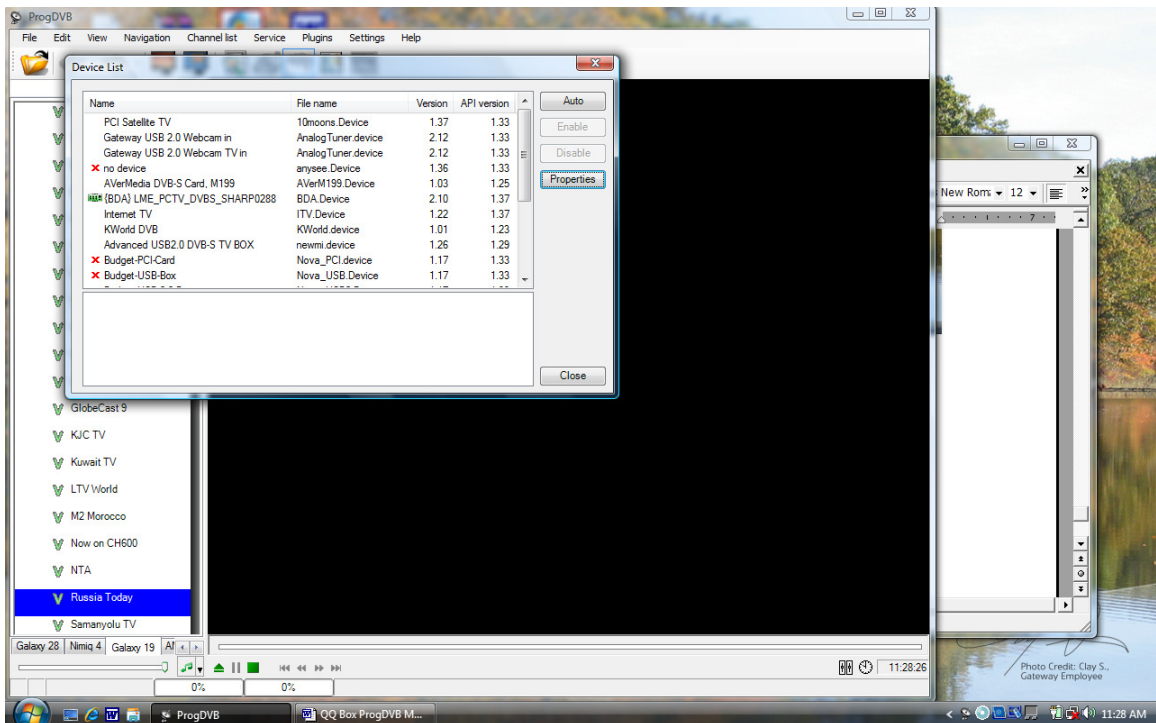
Select Delete and Click.



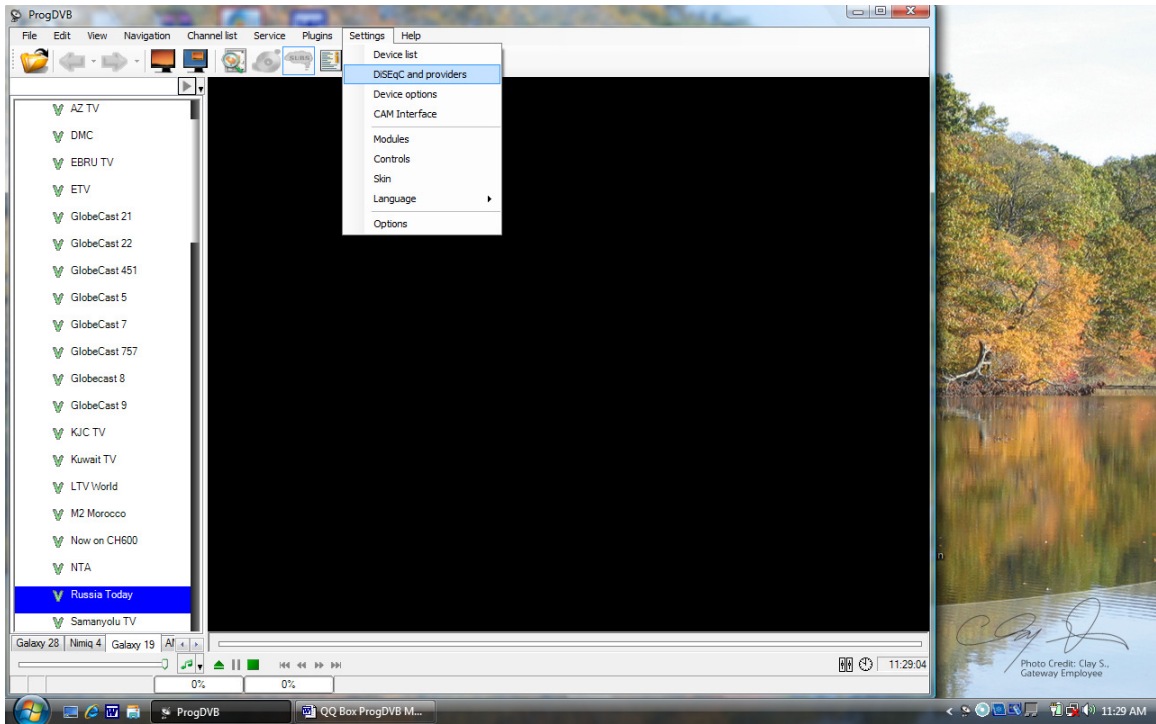
Click Yes.



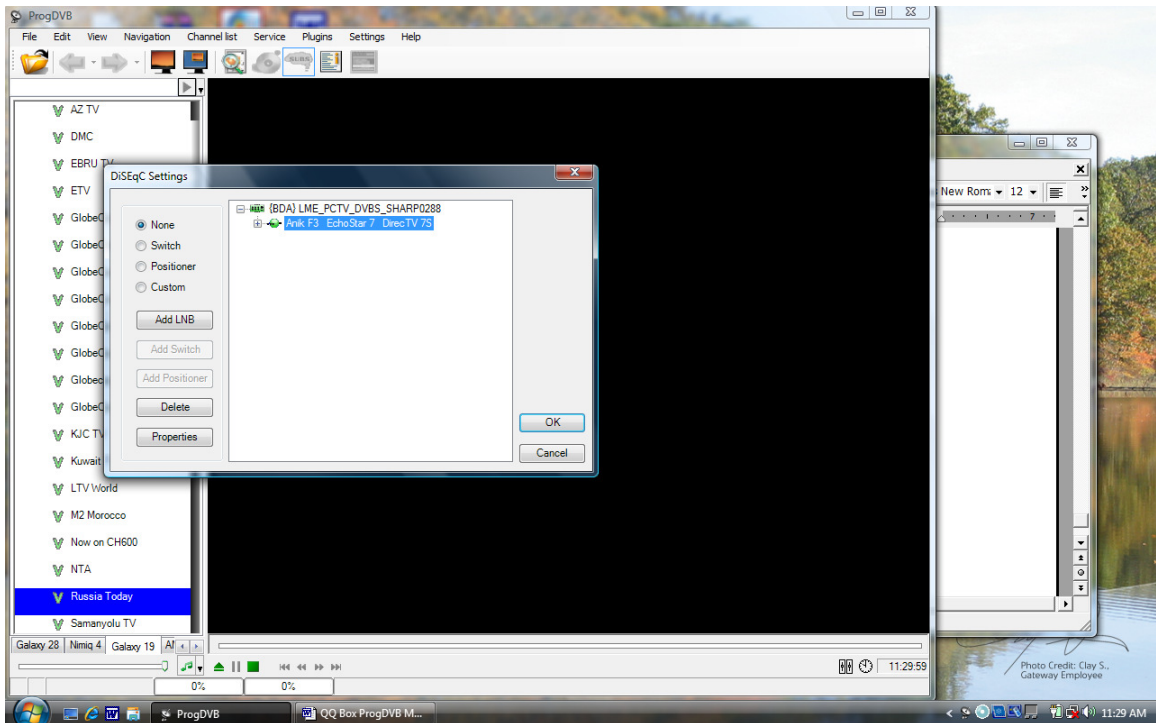
Upon start up, this screen will appear. Select Settings and then Device list.



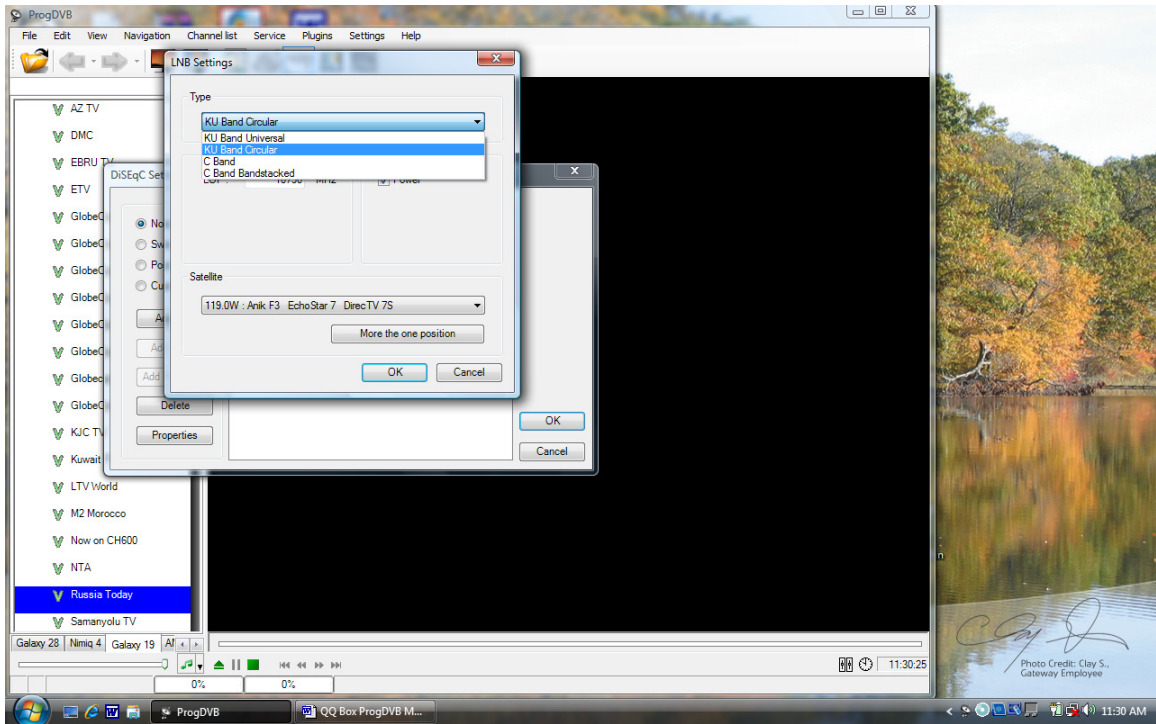
You will find the LME_DVB-S Device. Select it and click Enable. The green Icon should appear to the left of the driver.



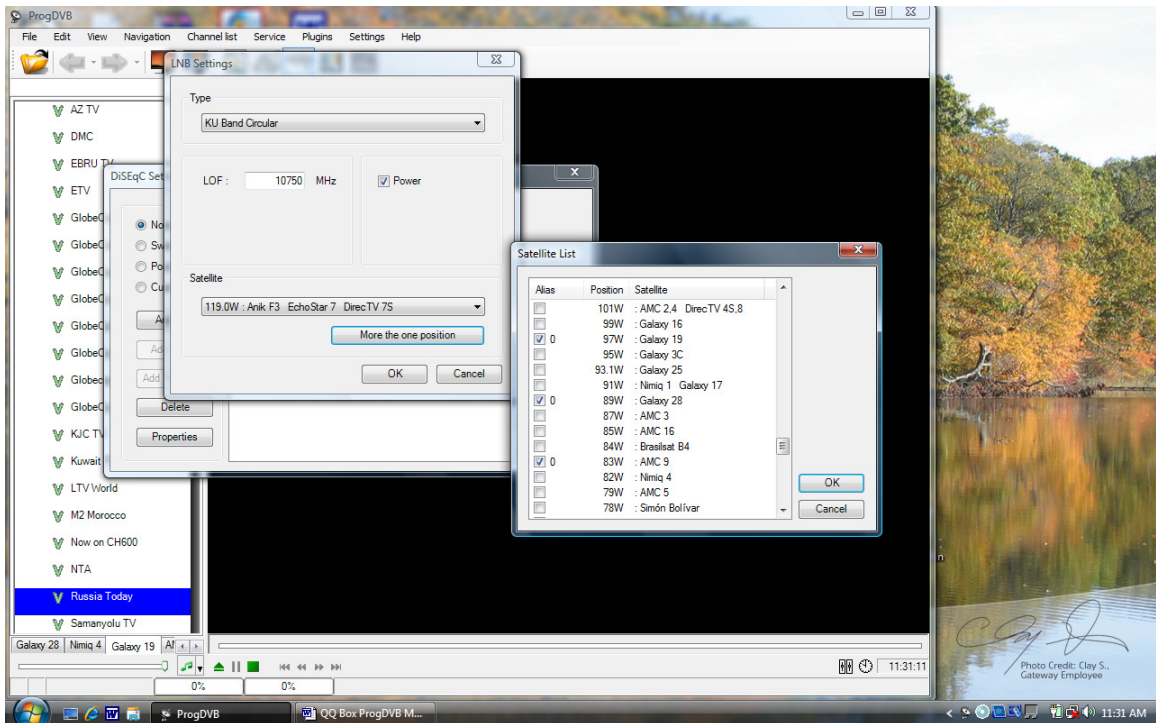
Next select DISEqC and providers.



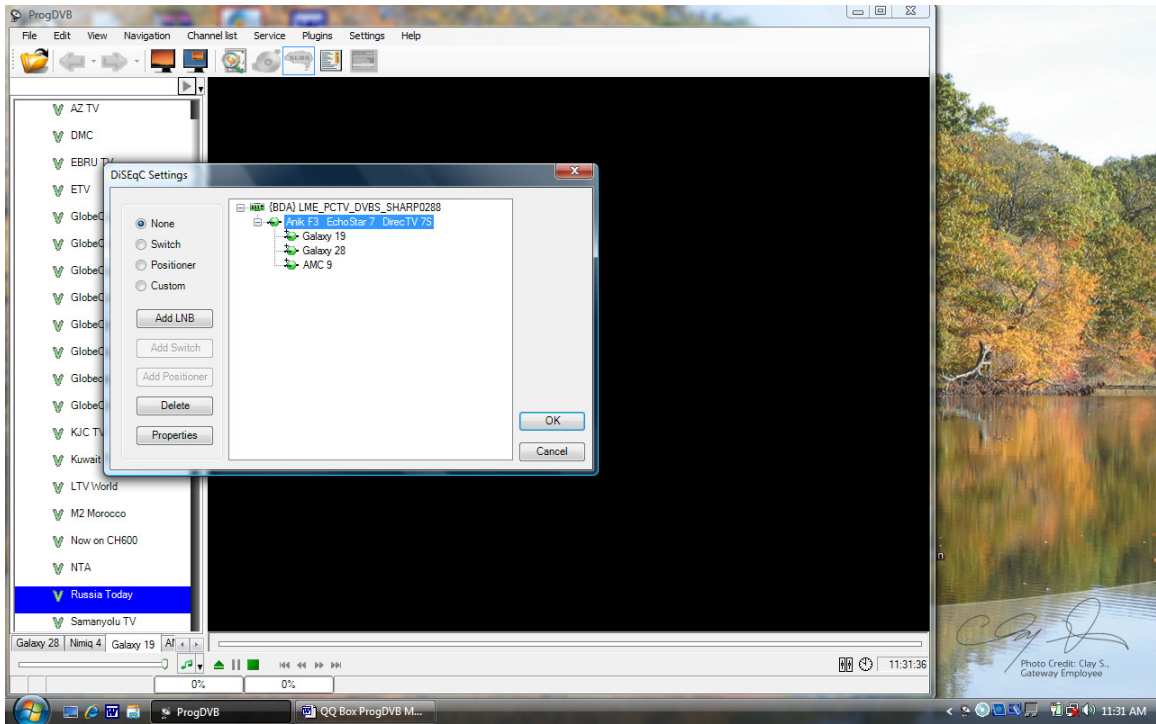
Click on the Icon just bellow the Device Driver.



Select LNB, For Circular or Standard 10750 LNBF select KU Band Circular.



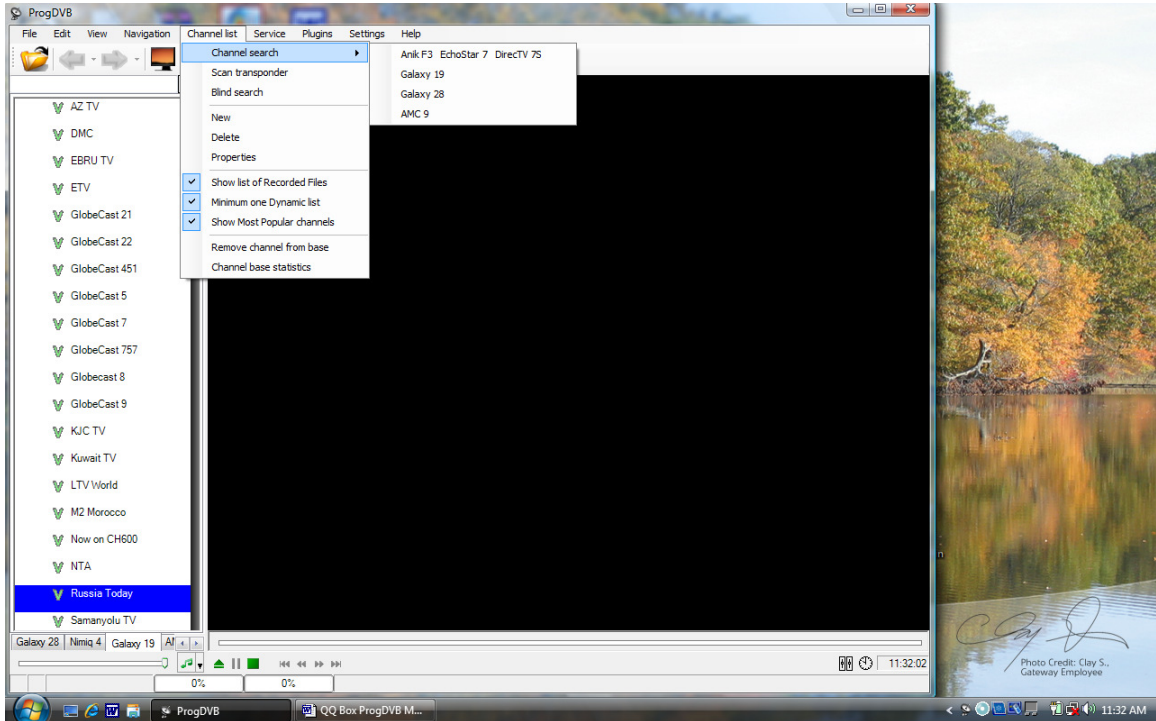
To add satellites click on “More then one position”
Then select all satellites you would like to scan and Click “OK”.



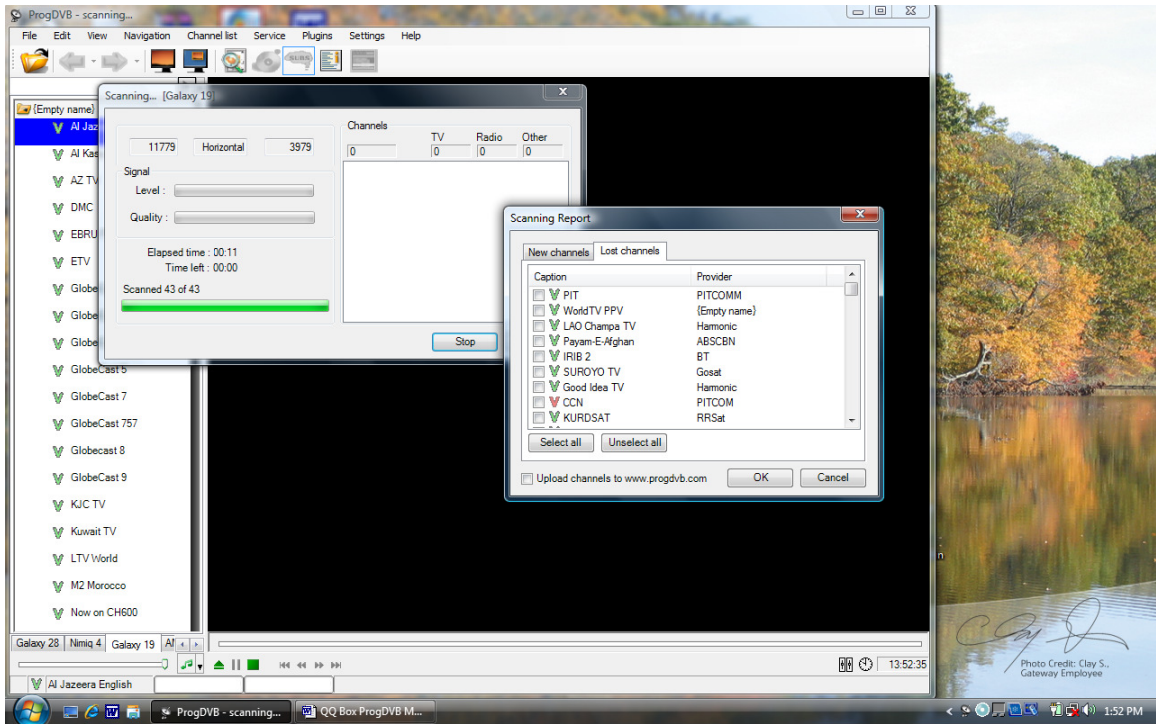
You will see this screen with all the satellites you chose.

Connect the Power Supply of the QQ Box to the Power Outlet.

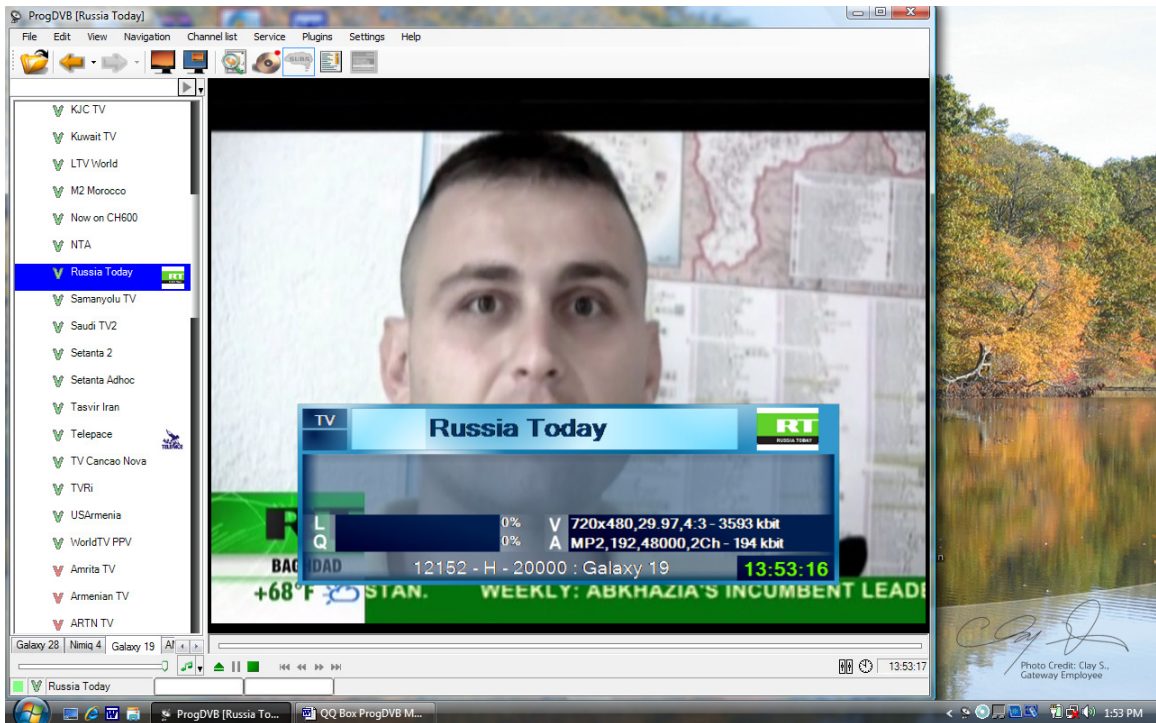
Confirm the RED LED on the QQ Box is lite.



Select "Channel list" then Channel search and then the satellite to be scanned.



After scanning is complete, a list of new channels will appear. Select “OK”.



Select a channel and enjoy.

Trouble Shooting

Reset QQ Box:

If the QQ Box hangs up, you can safely reset it using this procedure.

Close all programs.

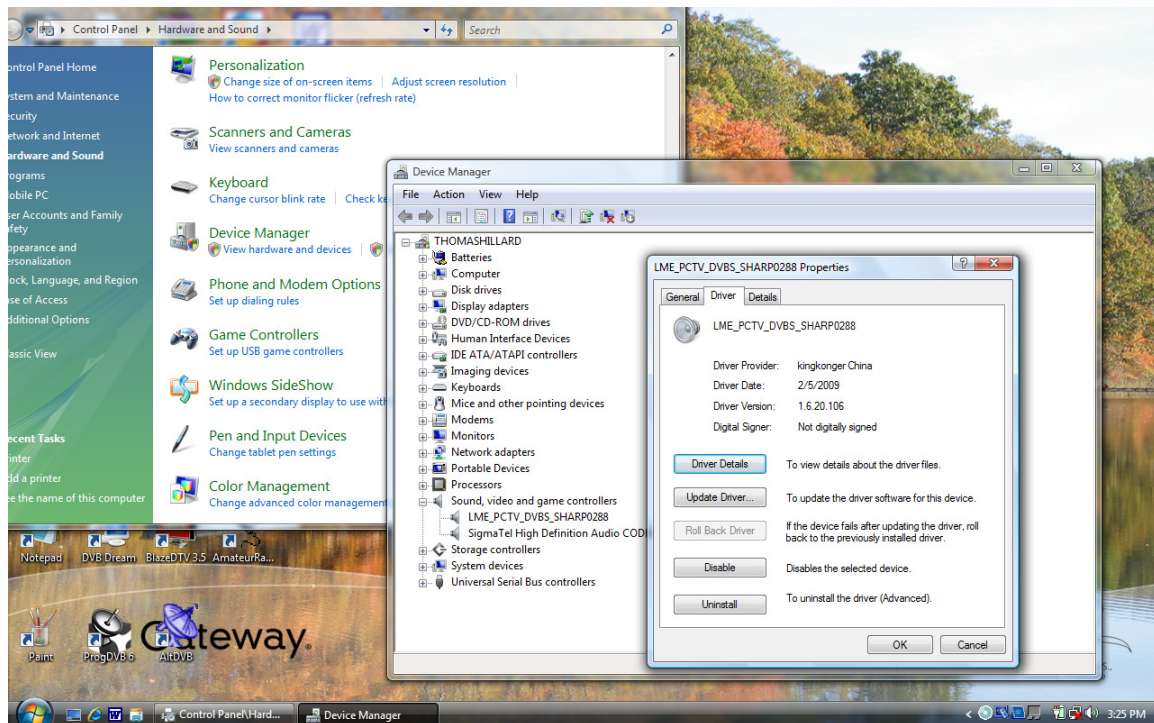
Remove the power cord to the QQ Box and then connect it.

If this does not cure the hang state, then;

With Windows Vista Desktop open:

- 1- Remove the power cord.
- 2- Remove USB cord.
- 3- Apply power cord.
- 4- Apply USB cord.
- 5- You will hear the windows USB connection confirmation tones.

If you remove the USB cord when ProgDVB is open the LME Driver will crash Vista.
Just restart windows to correct the blue screen. Select Normal Start.



Follow this path to check the status of your driver. This shows a normal working driver.
This is in Windows Vista other software will differ.

