

# QQ Box DVB Dream Manual

## Quick Start Guide Windows Vista

Thomas Hillard – Author  
14-12-2009

### **Hardware:**



Boot your Laptop. Now in Desktop view;  
Connect the QQ Box to the laptop with the USB Cord.  
Connect the LNBF dish cable to the QQ Box with RG-6 Cable.  
Connect the QQ Box Power Supply cord to the QQ Box.  
**Do not connect the Power Supply to the power outlet yet.**

### **Software:**

Install the DVB Dream software on your laptop.

<http://www.dvbdream.org/>

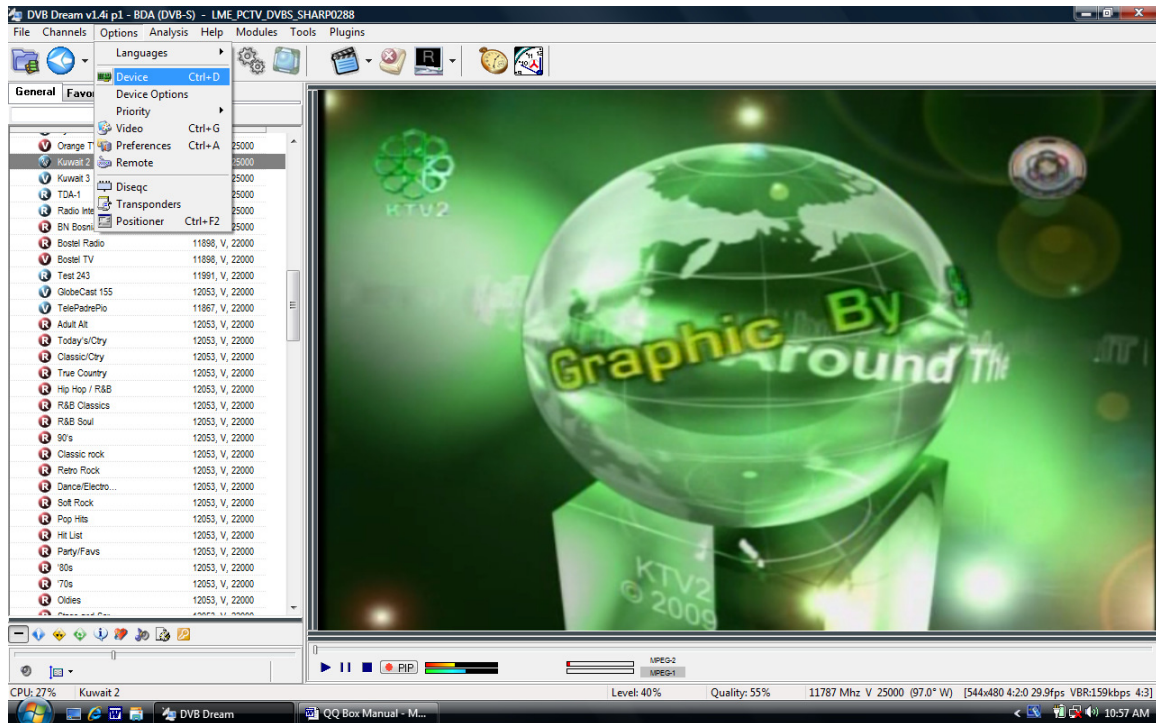
With the CD that came with your QQ Box, find the driver on the CD and install it. Do not install any other software from the CD. Alternatively, go to

<http://www.leaguerme.com/English/ShowArticle.asp?ArticleID=62>

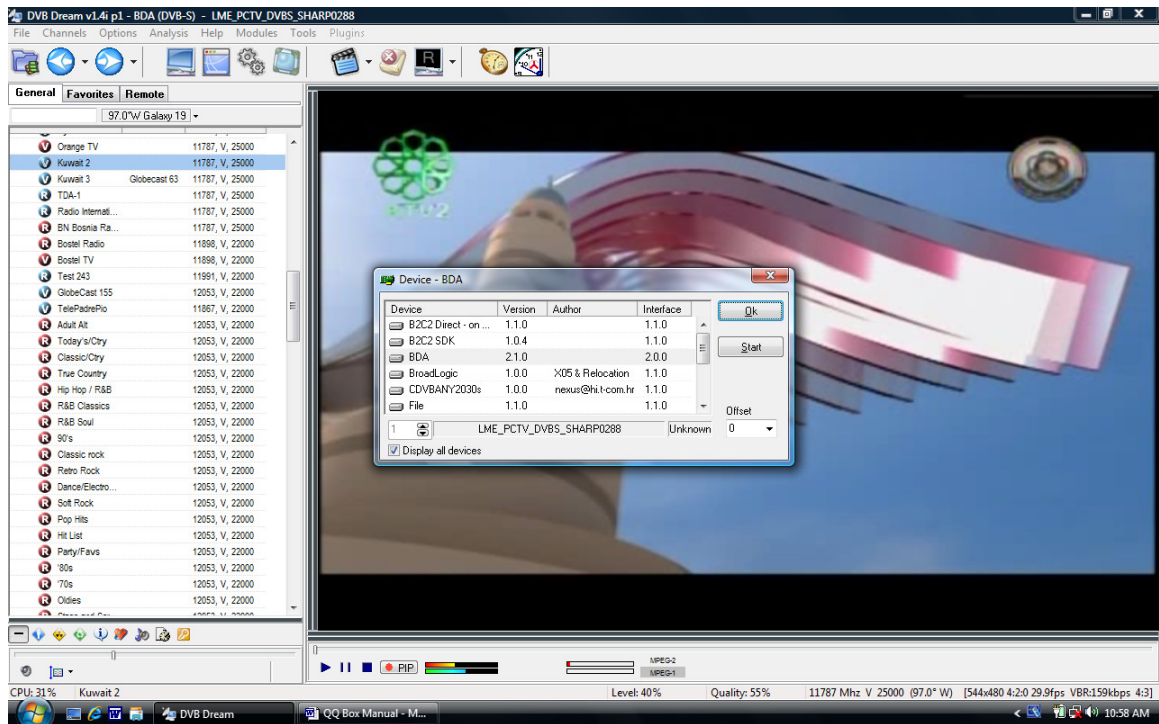
Download the correct driver from the LME support site for your model of QQ Box.

Run the software and to check initial operation remove the USB cord and replace the USB cord. Windows should report the USB driver with audible confirmation.

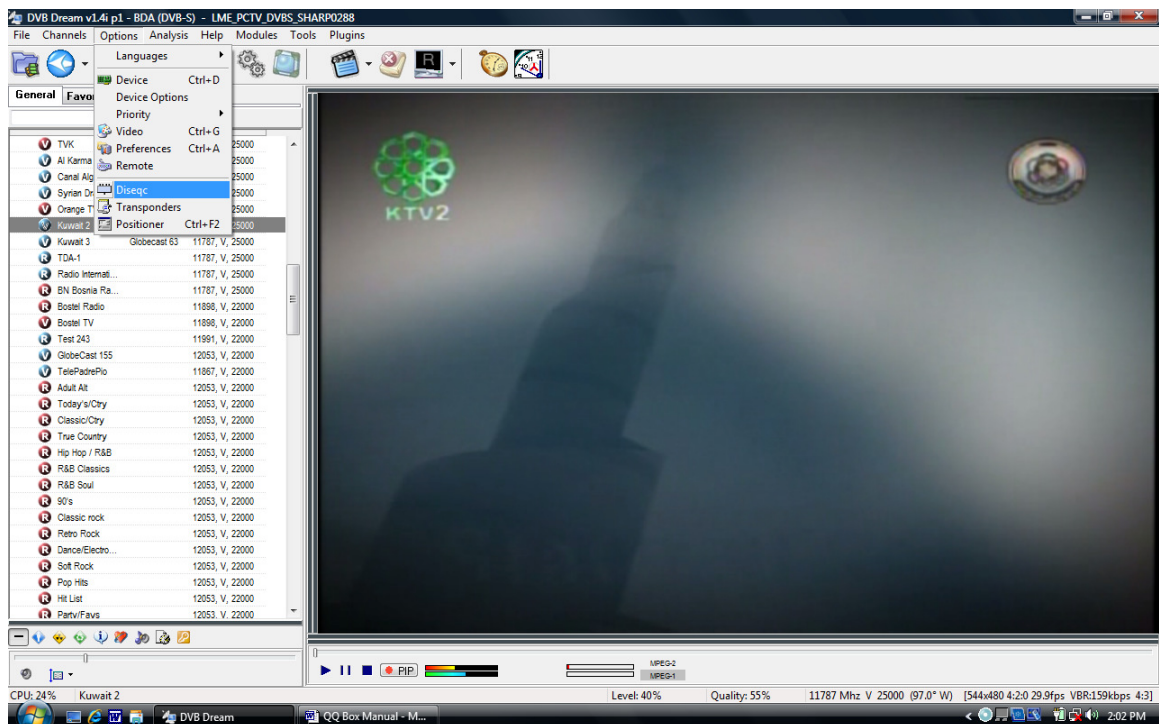
Now boot the DVB Dream Software from your Desktop Icon.  
This window should appear.



Check the upper most line of text in the window, you should see your BDA driver.  
Click on "Options" and then "Device".

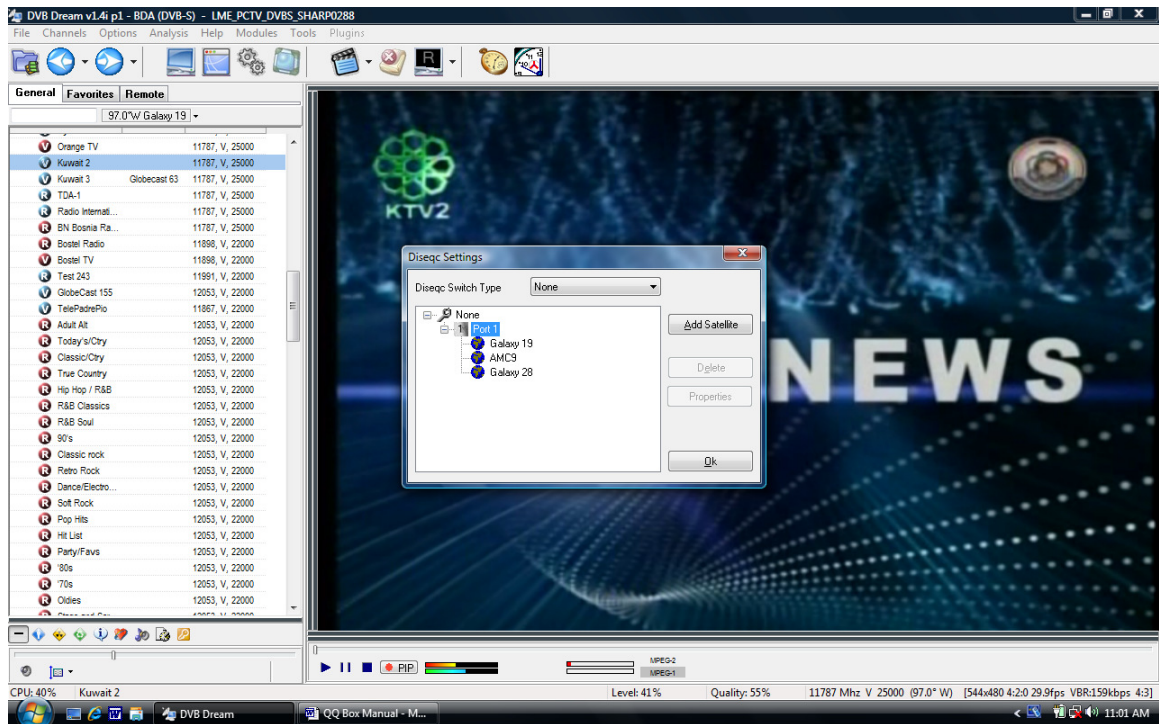


This “Device – BDA” window will show you that the QQ Box LME Driver is installed. Click “Start” and “OK”.

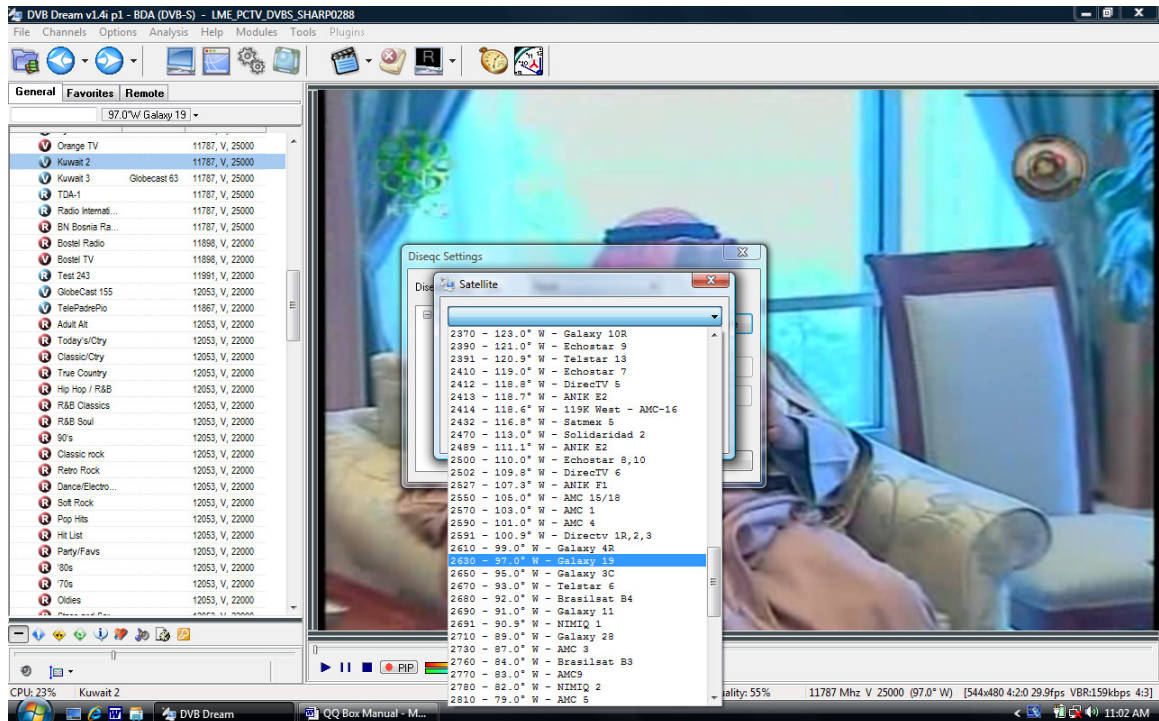


Now select “Options” “DISEqC”. Click on it.

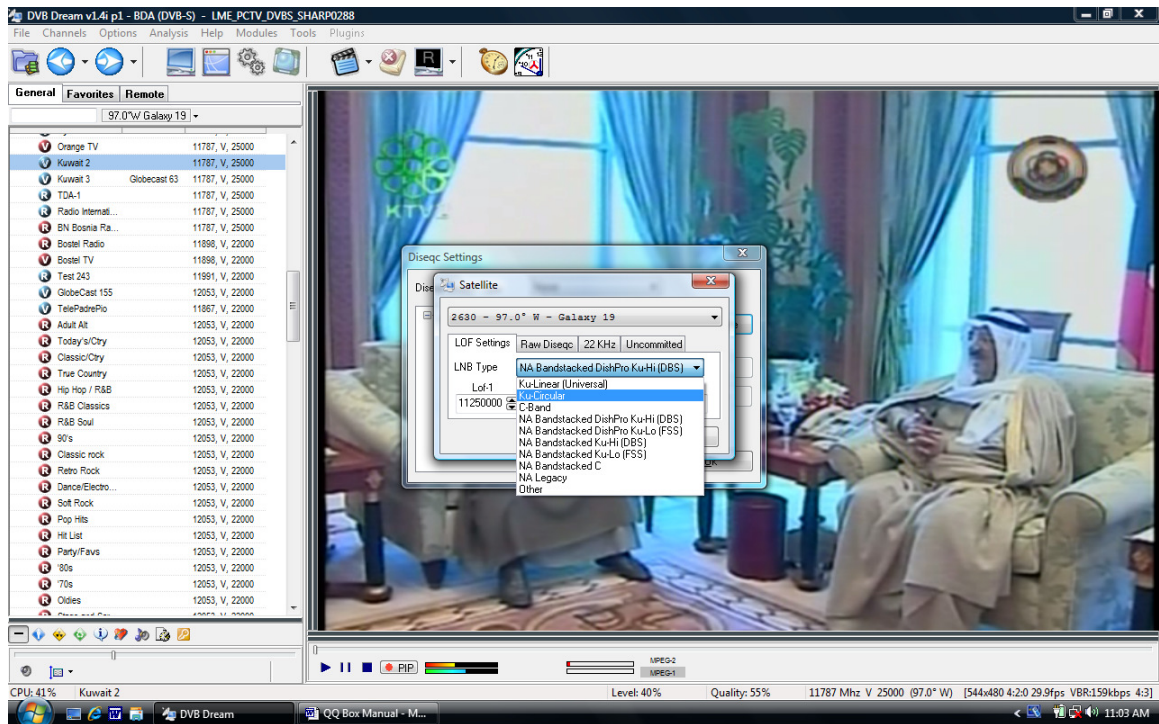




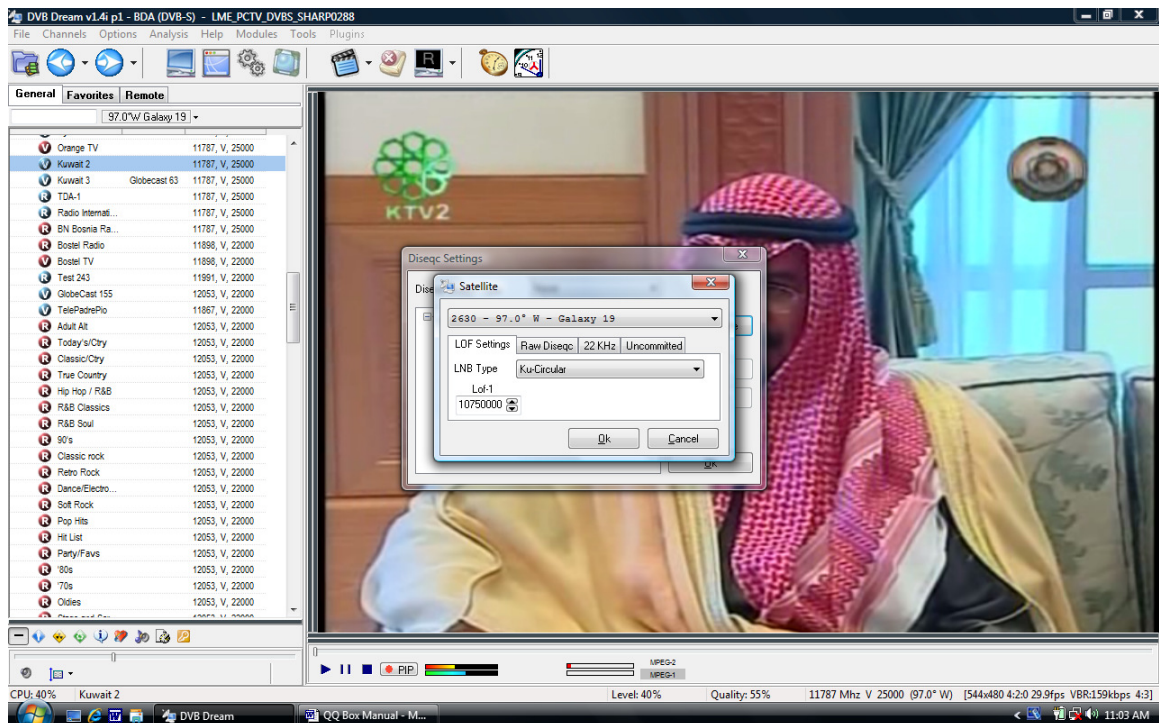
“DISEqC Settings” will appear. For just one LNBF select “None” Then click on “Add Satellite”.



From the Pull Down Menu select your satellite.



In the Pop Up Window “ Satellite” select the Pull Down Window for “LNB Type”. For a Ku Band Linear Standard or Circular LNB/F select “KuCircular”



Select “OK”

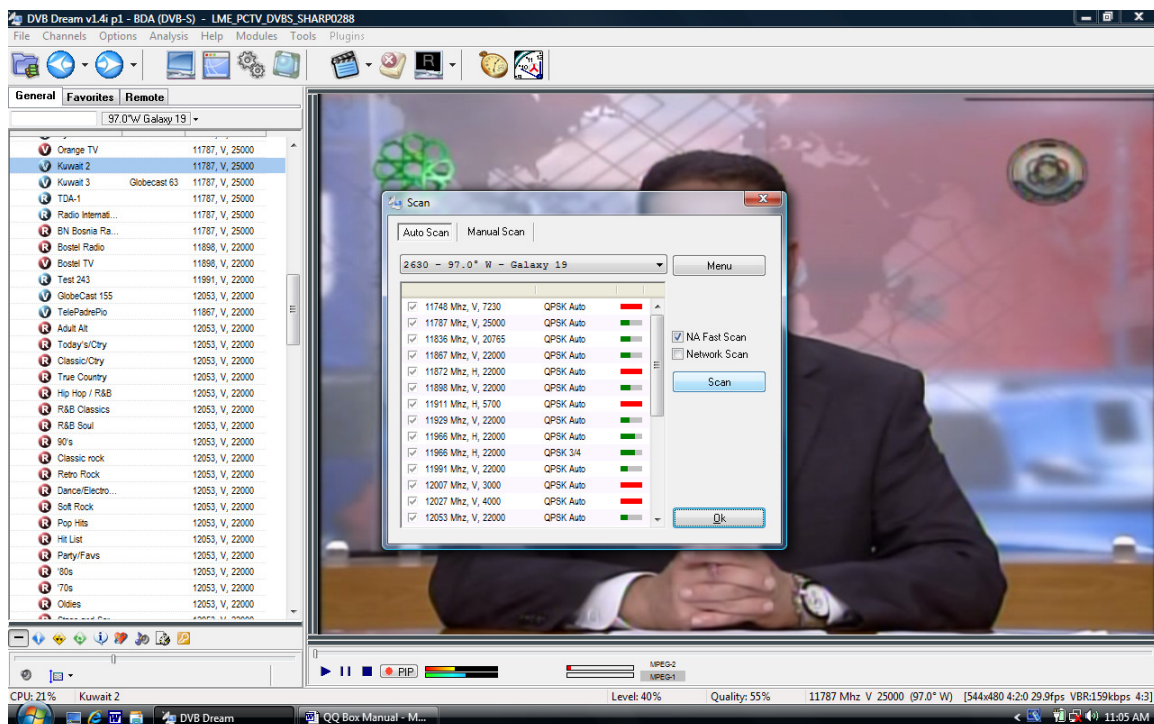




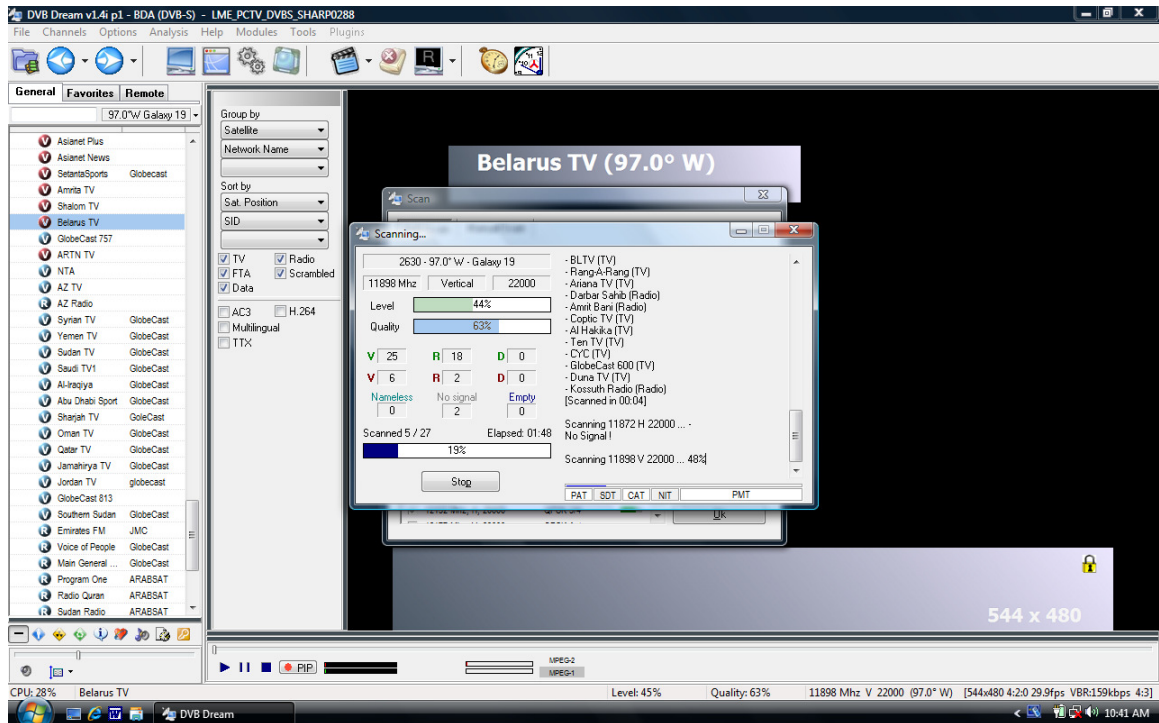
Connect your QQ Box Power Supply to the Power Outlet.

The Red LED on the QQ Box should light. If the “Lock” light comes on remove the Power Cord then the USB Cord. Reconnect the USB Cord and the Power Cord. This is the reset procedure. Select the “Channels” tab. Select the “Scan” tab. Click Scan.

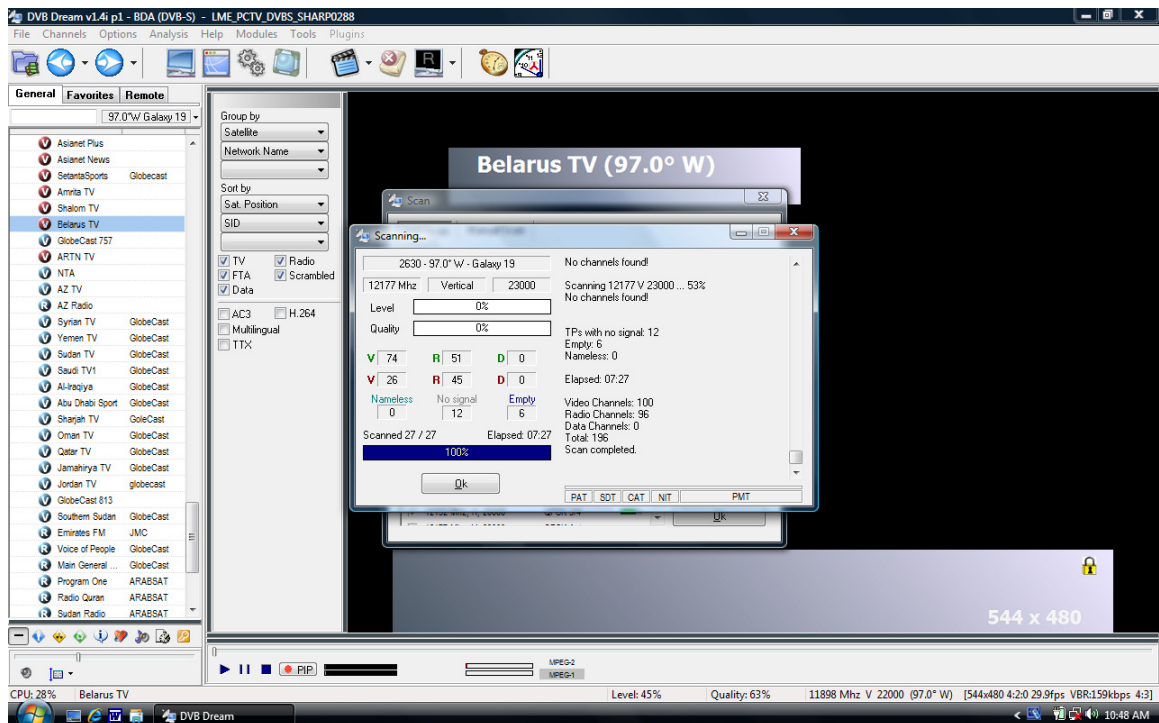
Notice, that the Power LED glows dim and then bright, this is the driver software loading to the LME2510C.



This is the “Scan” Pop Up Window Click on “Scan”

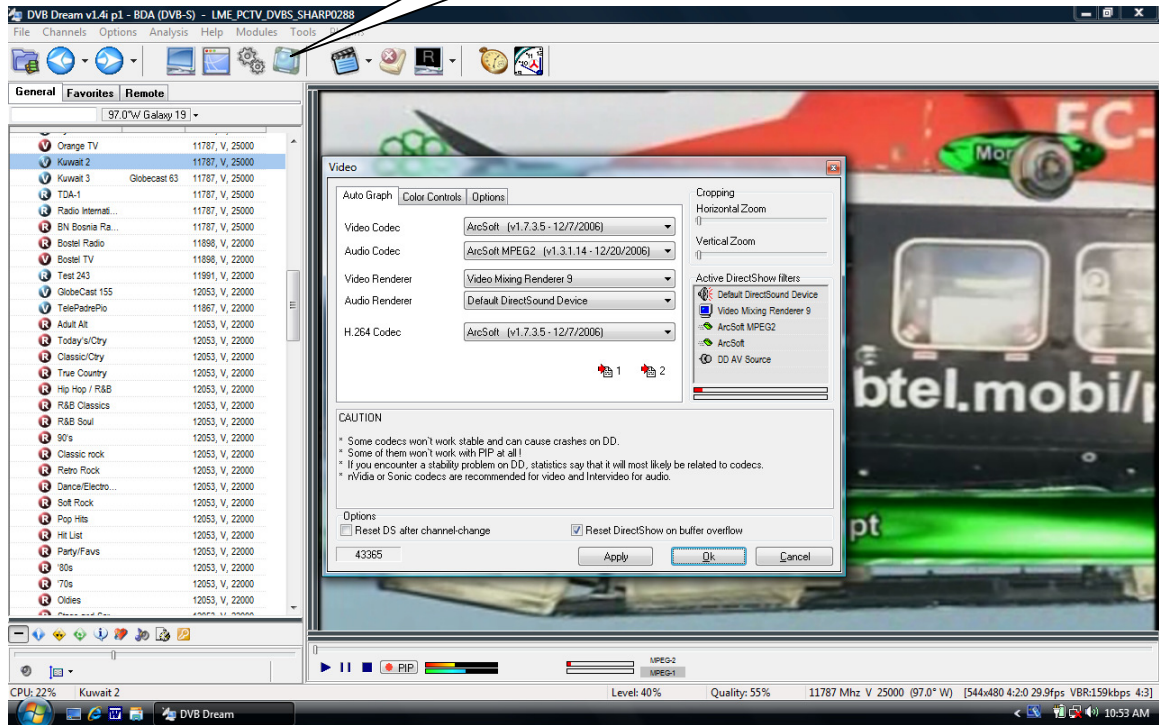


The “Scanning” window will appear and as the program starts to scan you will see the progress here. When an active transponder is found you will see the green and light blue “Level” and “Quality” bars.

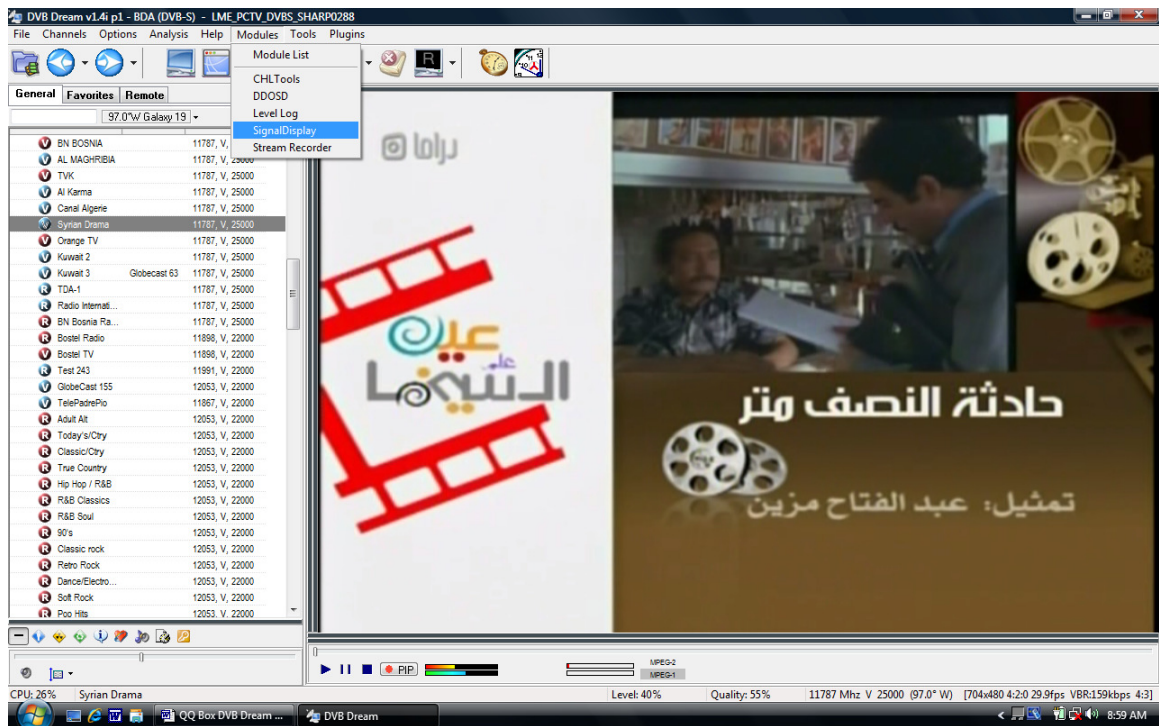


When scanning is complete you will see a tally of “V” Video “Free To Air” or “FTA”. Click “OK”

Click on this Icon.



In the “Video” POP Up Window you can select your Codecs, or just use default. Click “OK”

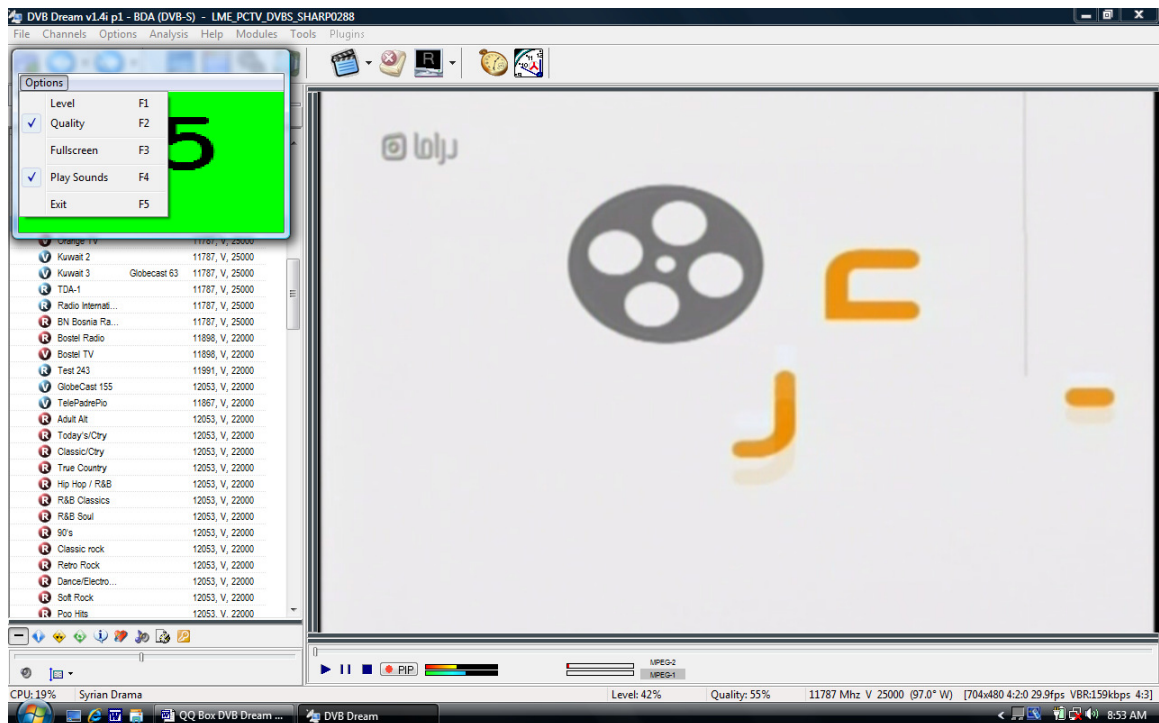


Select “Modules” and cursor to select “SignalDisplay”





This is what you use to peak your dish and LNB setup. The higher the number the better the signal.



You may want to take your laptop and QQ Box out to the dish for fine tuning. Audible signal strength announcements are available by clicking on “Play Sounds”.



On the left hand side of the screen is displayed your channel list.

## **Trouble Shooting**

### **Reset Software:**

It may be necessary to close and restart DVB Dream to clear a fault condition.

### **Reset QQ Box:**

If the QQ Box hangs up, you can safely reset it using this procedure.

Close all programs.

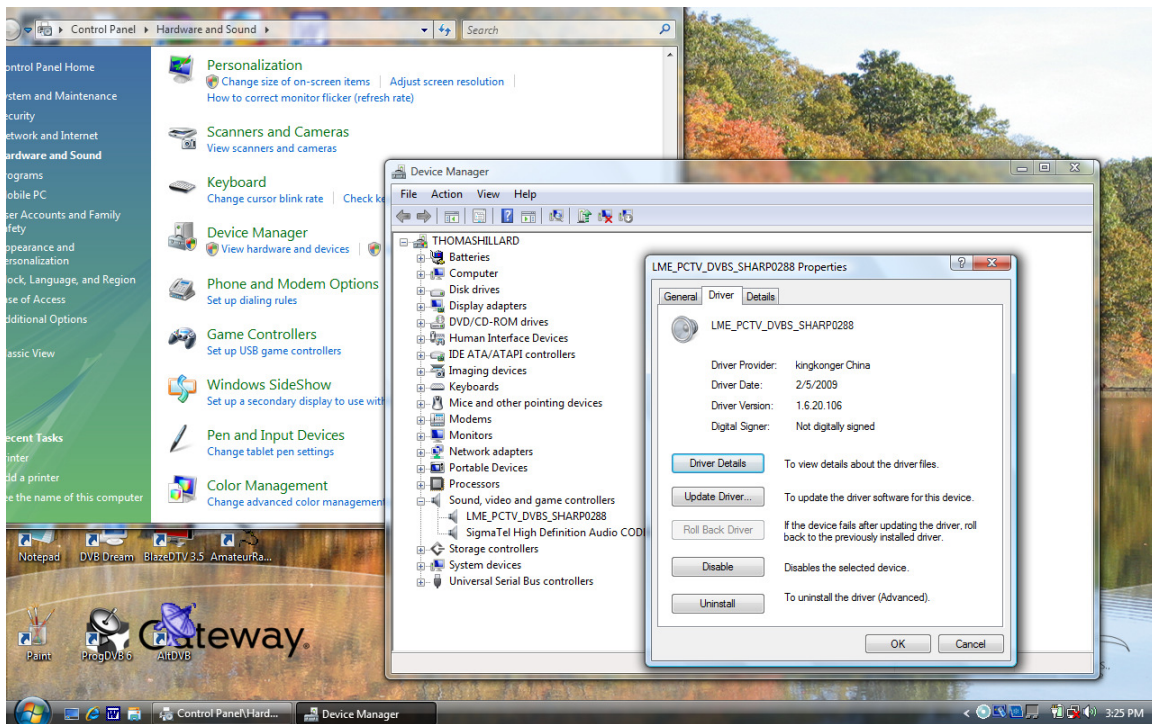
Remove the power cord to the QQ Box and then connect it.

If this does not cure the hang state, then;

With Windows Vista Desktop open:

- 1- Remove the power cord.
- 2- Remove USB cord.
- 3- Apply power cord.
- 4- Apply USB cord.
- 5- You will hear the windows USB connection confirmation tones.

If you remove the USB cord when DVB Dream is open the LME Driver will crash Vista. Just restart windows to correct the blue screen. Select Normal Start.



Follow this path to check the status of the LME Driver. This is shown in Windows Vista and is normal running, other Windows software will differ.



## **Dish Installation**

QQ Box as a sensitive accurate Satellite Meter.



Fine tuning the dish is much easier with the QQ Box. Display the channels signal quality from DVB Dream “Scan Transponder” window.

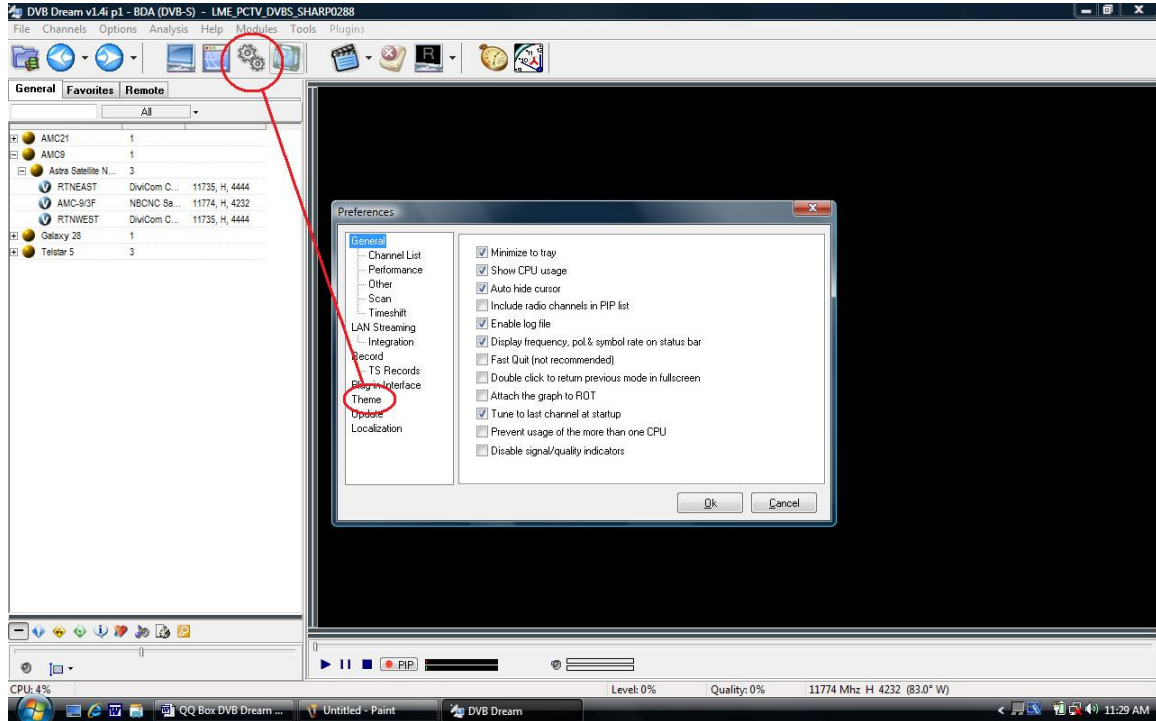
- 1- Plumb the pole at two places, 90 degrees apart. Be very accurate.
- 2- Find your Longitude ([www.satsig.net](http://www.satsig.net)) and your Latitude.
- 3- On one side of the motor find the Latitude scale and set correctly.
- 4- Disregard the “Elevation” scale.
- 5- Place a level on the motor bracket and adjust for level front to back.
- 6- Level across the top of the motor bracket.
- 7- Go to; <http://www.esrl.noaa.gov/gmd/grad/solcalc/>
- 8- Find your Solar Noon. Enter your coordinates and time zone.
- 9- Record your Solar Noon.
- 10- Mark a vertical center line on your dish with a pencil.

- 11- When Solar Noon arrives, you adjust the dish East or West to line up the LNBF feed horn shadow to the pencil line.

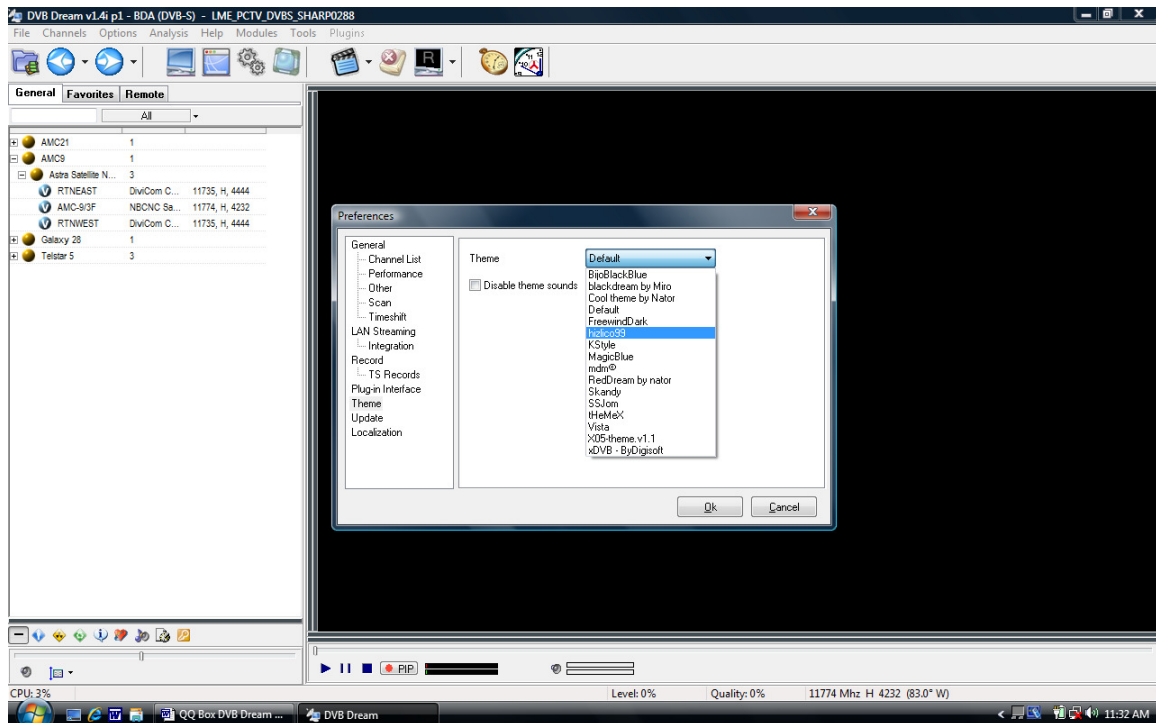


- 12- Move your dish with the motor to your “True South” That is the satellite closest to your longitude.
- 13- Select a strong transponder and see if you have a signal.
- 14- With a signal showing is the Signal Quality bar in software, tip the edge of the dish East or West to see the strongest signal. Adjust the dish.
- 15- Tip the dish top with your finger to get the direction to max. the signal.
- 16- Use your dish elevation adjustment to peak this level.
- 17- You may repeat these steps until you are satisfied.

## Changing Skins/Scan tones:

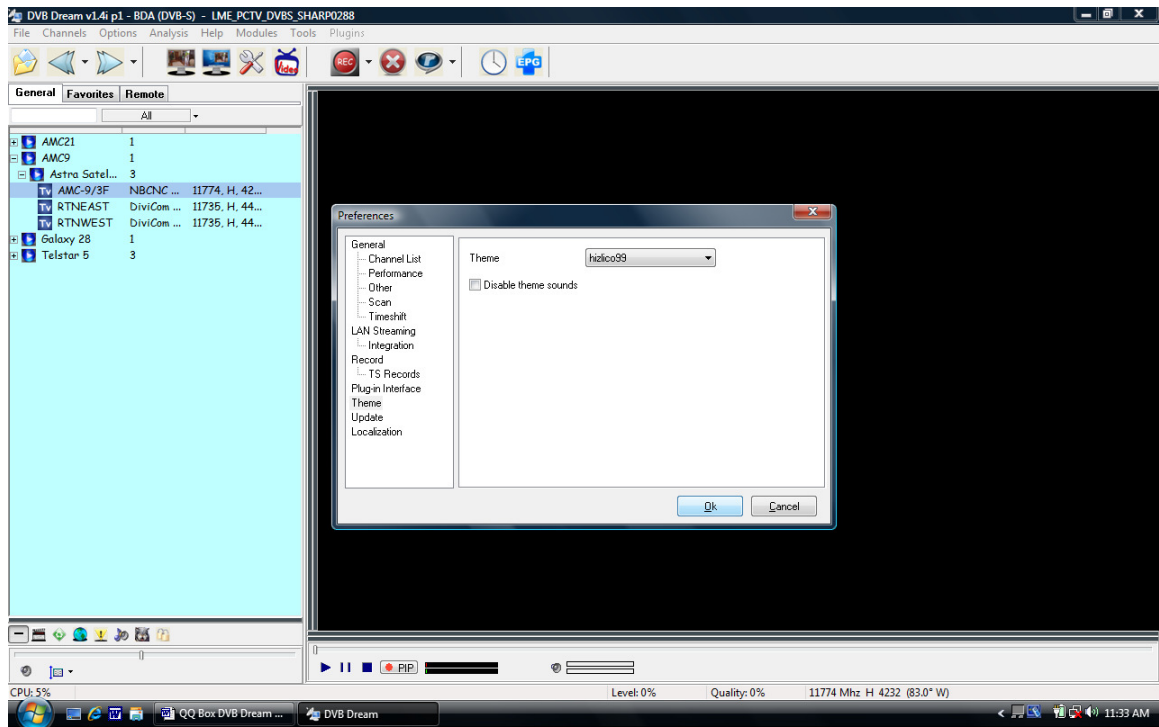


Click on the “Tools” Icon and then on “Theme”.



Select new skin.





When you find your preference, click OK.