

QQ Box DVB Dream Manual

Quick Start Guide

Thomas Hillard – Author

12-14-2009

Hardware:



Connect the QQ Box to the laptop with the USB Cord.
Connect the LNBF dish cable to the QQ Box with RG-6 Cable.
Connect the QQ Box Power Supply cord to the QQ Box.
Do not connect the Power Supply to the power outlet yet.

Software:

Install the DVB Dream software on your laptop.

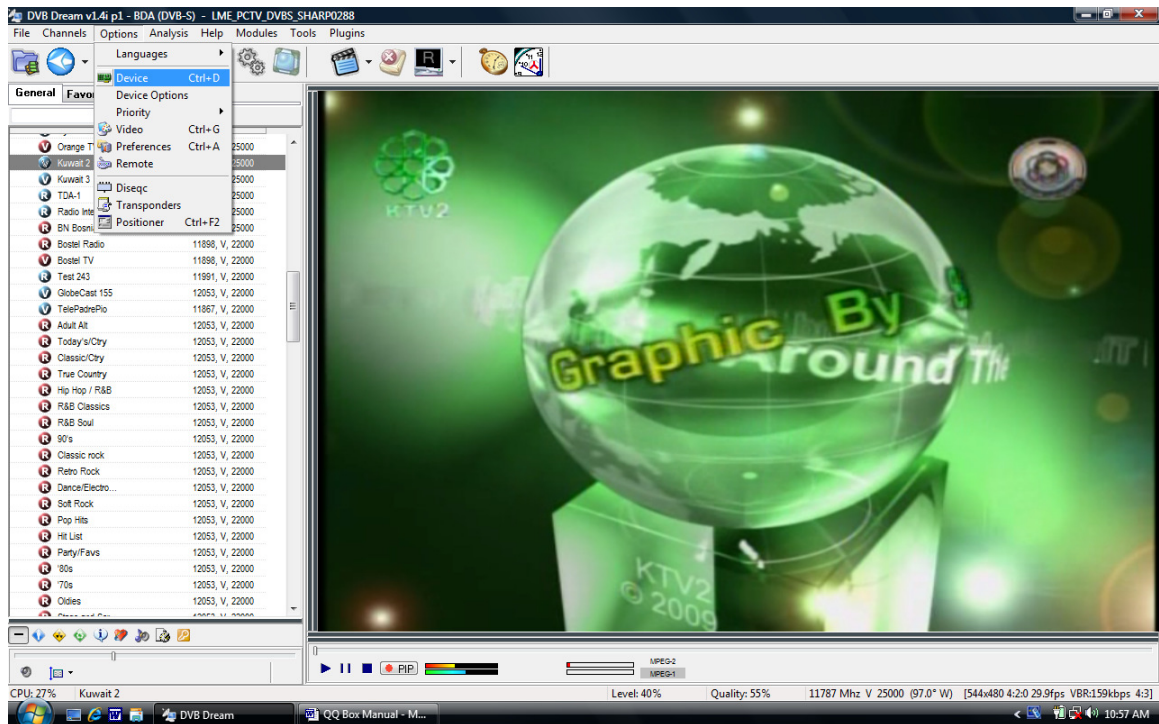
<http://www.dvbdream.org/>

With the CD that came with your QQ Box, find the driver on the CD and install it. Do not install any other software from the CD. Alternatively, go to

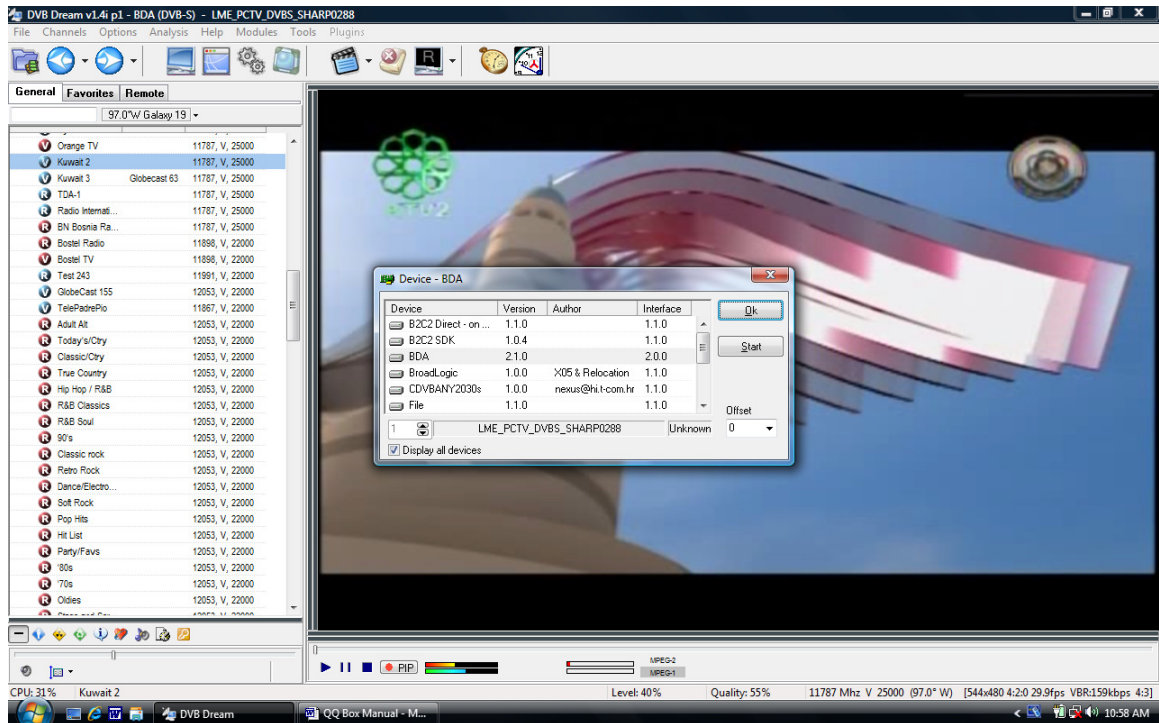
<http://www.leaguerme.com/English/ShowArticle.asp?ArticleID=62>

Download the correct driver from the LME support site for your model of QQ Box.
Run the software and to check initial operation remove the USB cord and replace the USB cord. Windows should report the USB driver with audible confirmation.

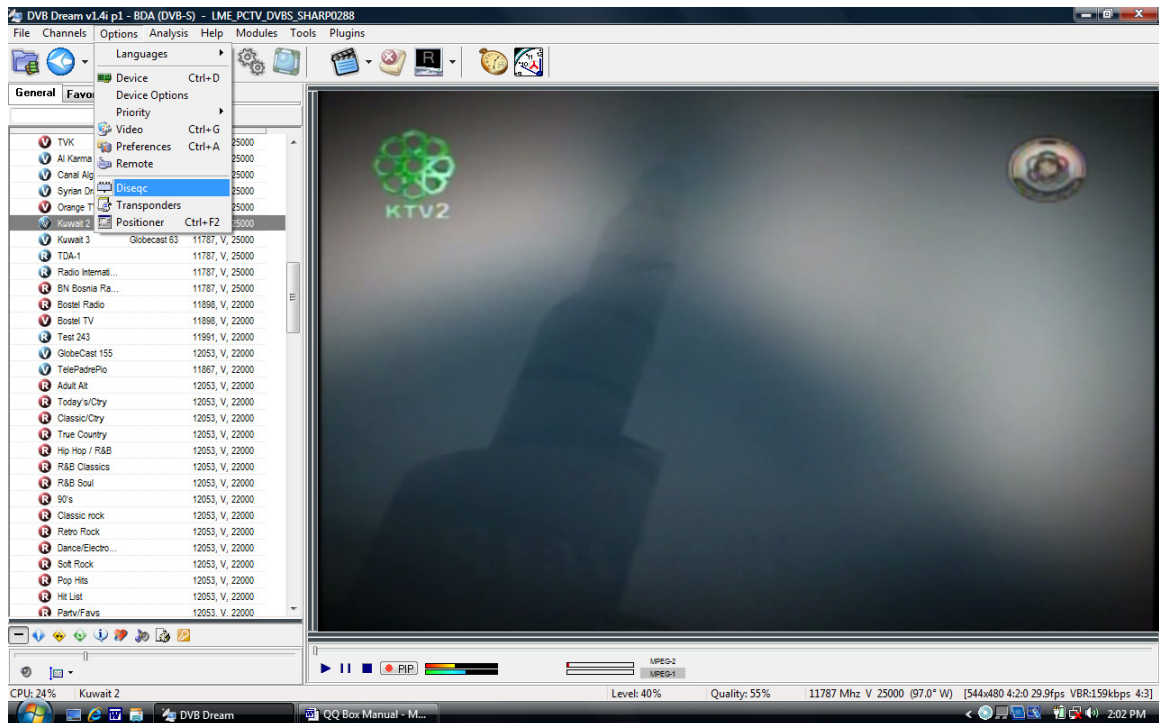
Now boot the DVB Dream Software from your Desktop Icon.
This window should appear.



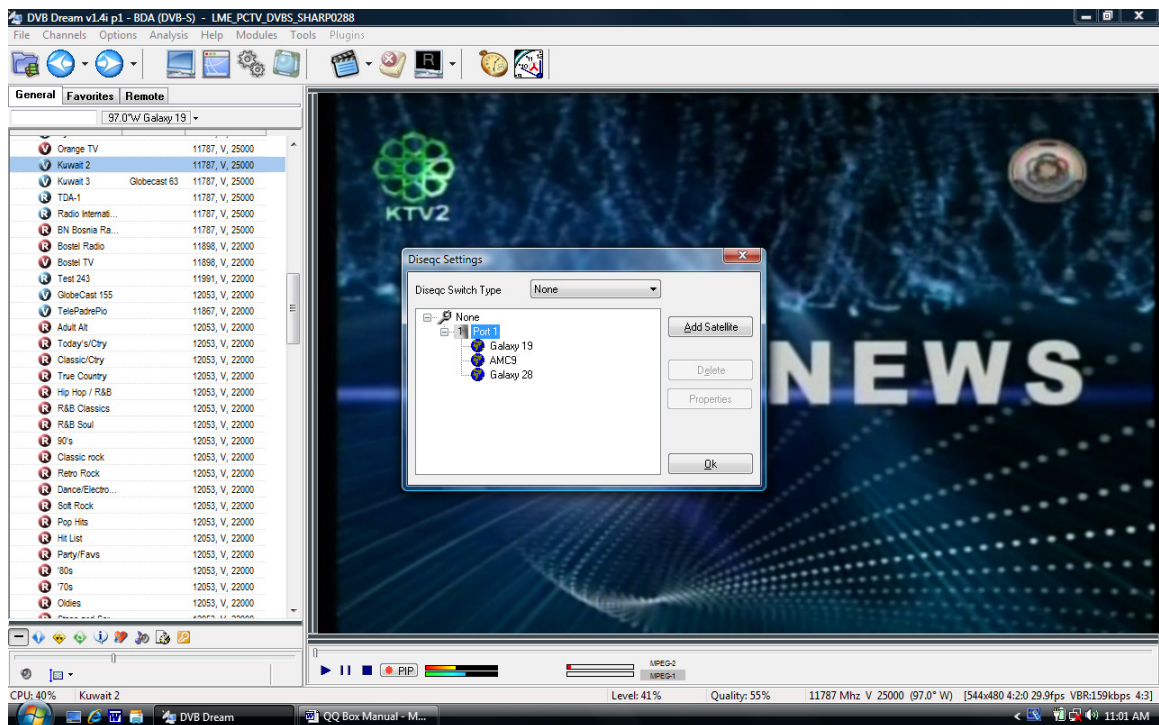
Check the upper most line of text in the window, you should see your BDA driver.
Click on “Options” and then “Device”.



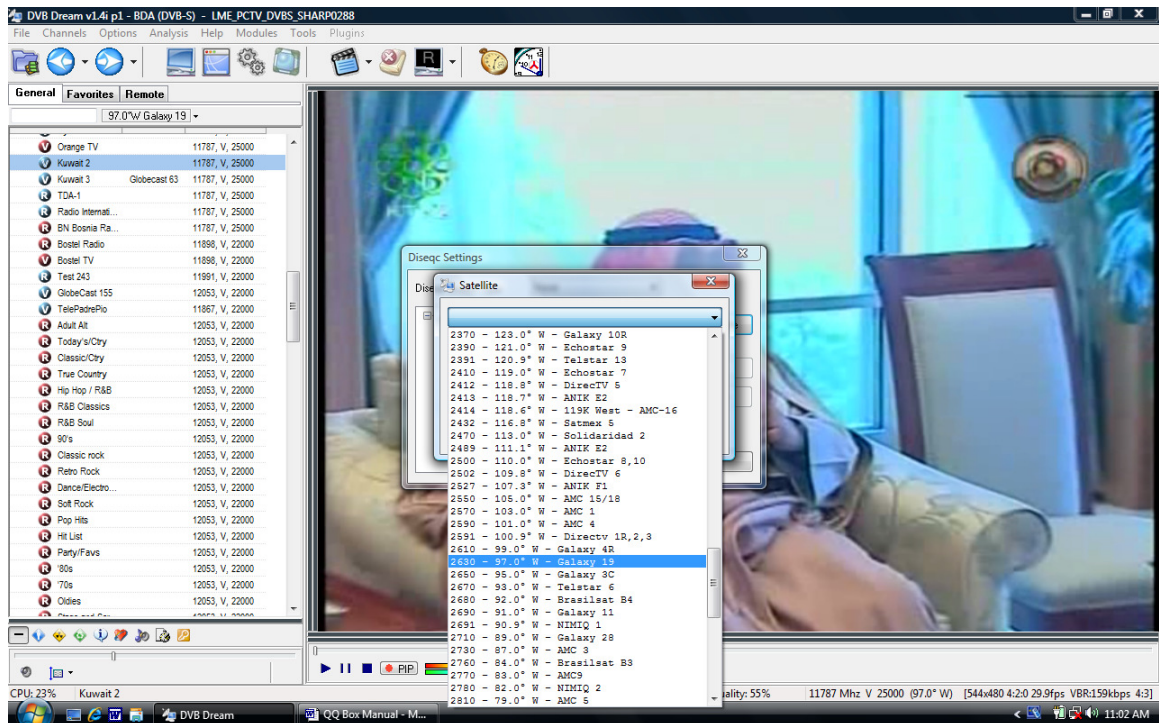
This “Device – BDA” window will show you that the QQ Box LME Driver is installed. Click “Start” and “OK”.



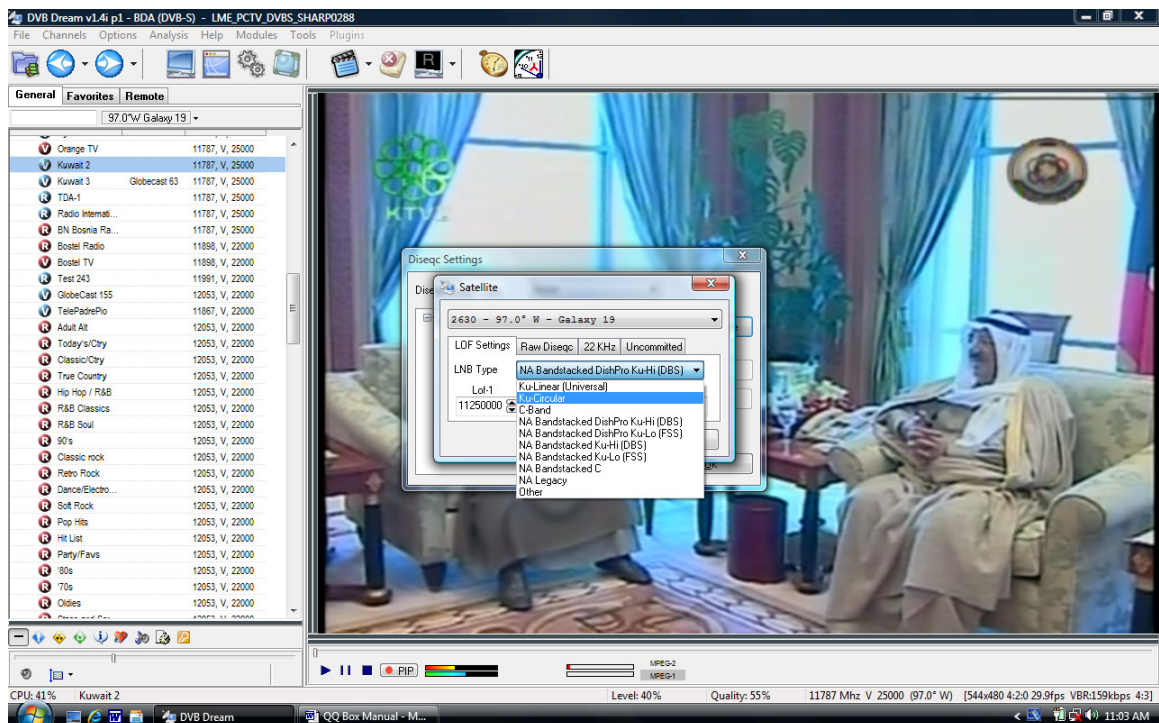
Now select “Options” “DISEqC”. Click on it.



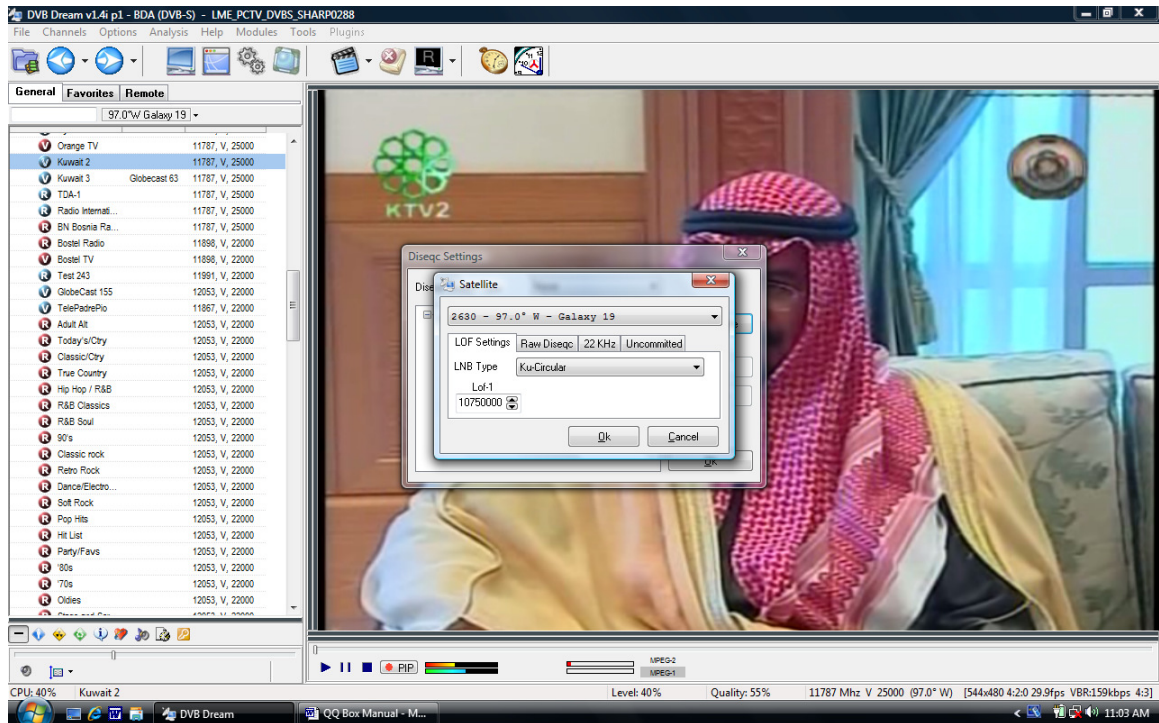
“DISEqC Settings” will appear. For just one LNBF select “None” Then click on “Add Satellite”.



From the Pull Down Menu select your satellite.



In the Pop Up Window “Satellite” select the Pull Down Window for “LNB Type”. For a Ku Band Linear Standard or Circular LNBF select “KuCircular”

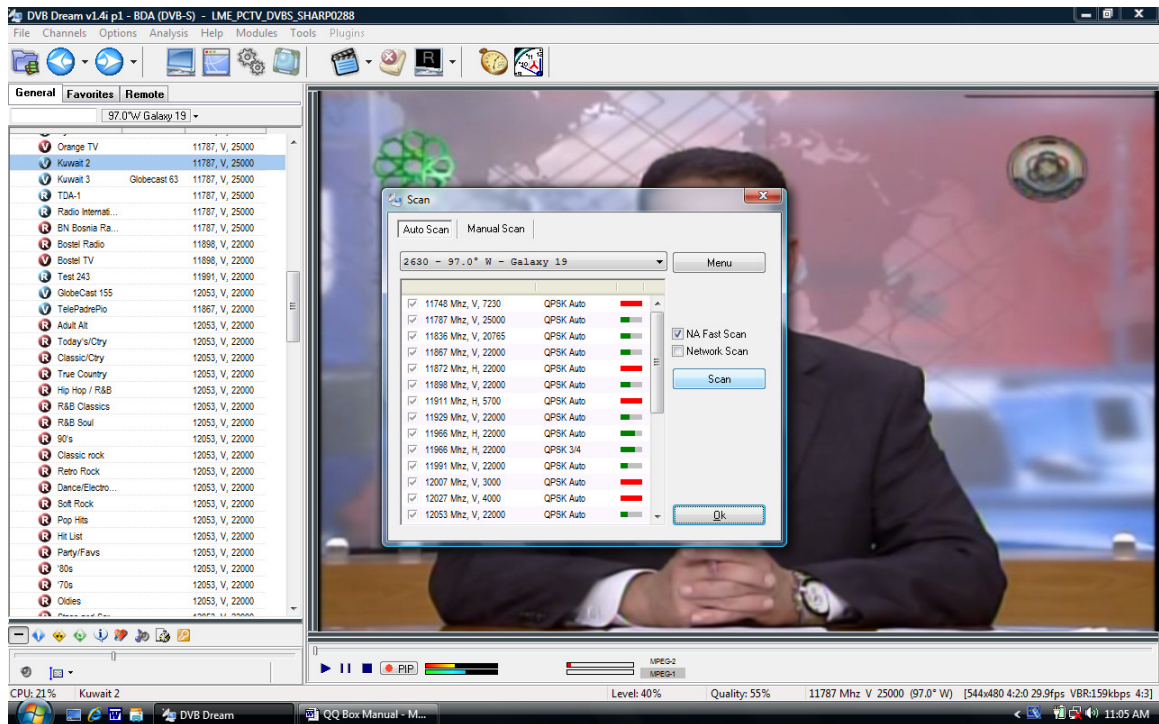


Select "OK"

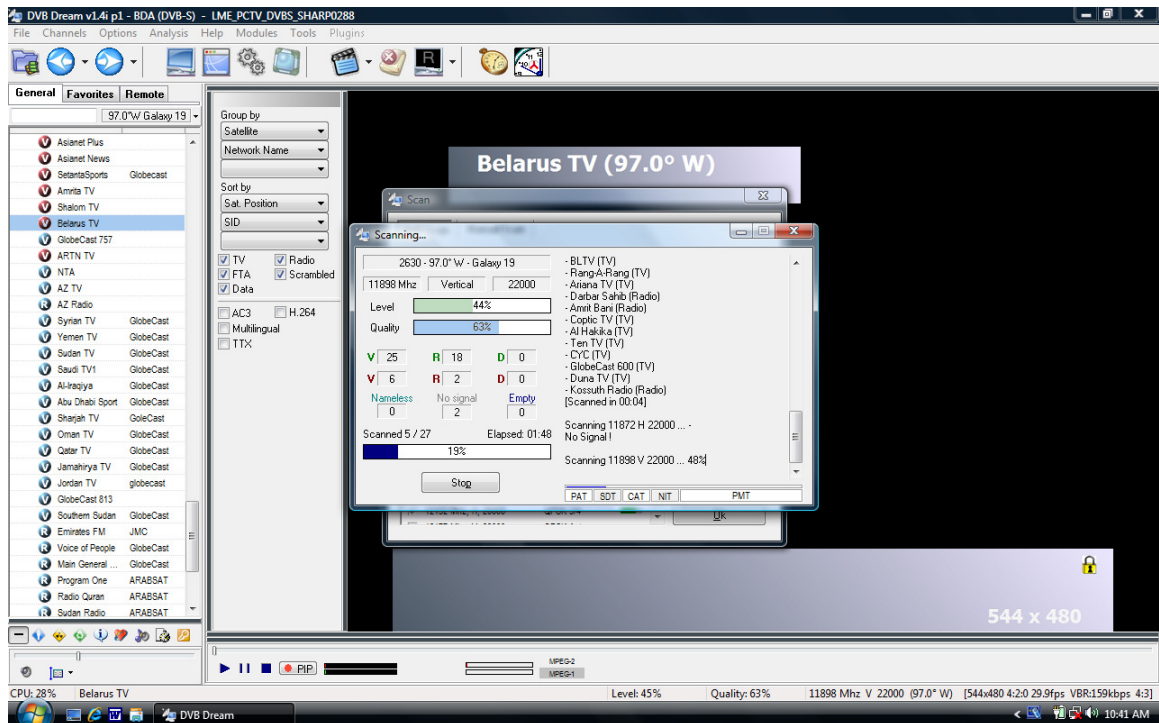


Connect your QQ Box Power Supply to the Power Outlet.

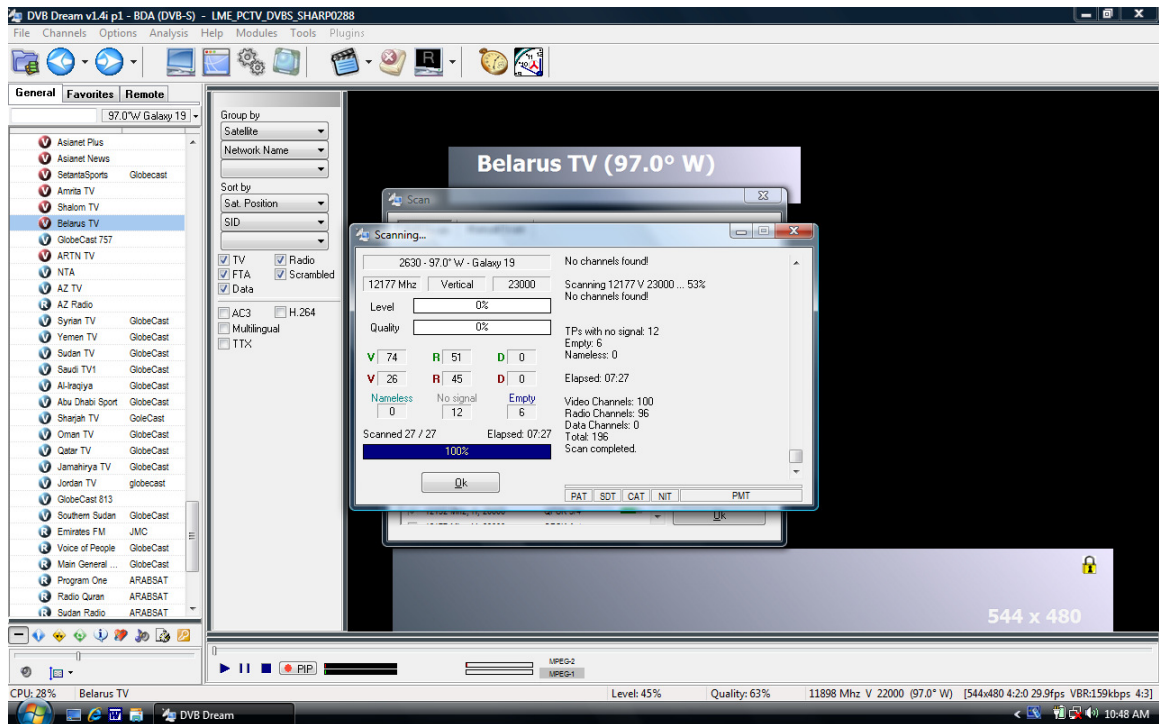
The Red LED on the QQ Box should light. If the “Lock” light comes on remove the Power Cord then the USB Cord. Reconnect the USB Cord and the Power Cord. This is the reset procedure. Select the “Channels” tab. Select the “Scan” tab. Click on.



This is the “Scan” Pop Up Window Click on “Scan”

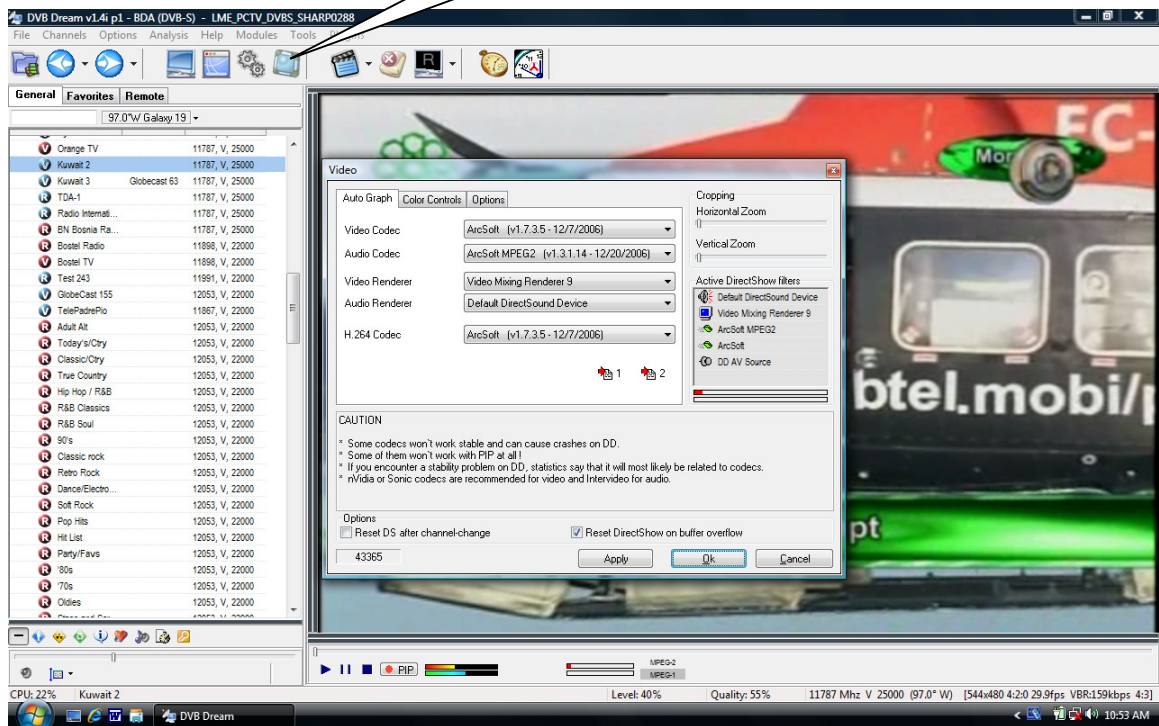


The “Scanning” window will appear and as the program starts to scan you will see the progress here. When an active transponder is found you will see the green and light blue “Level” and “Quality” bars.

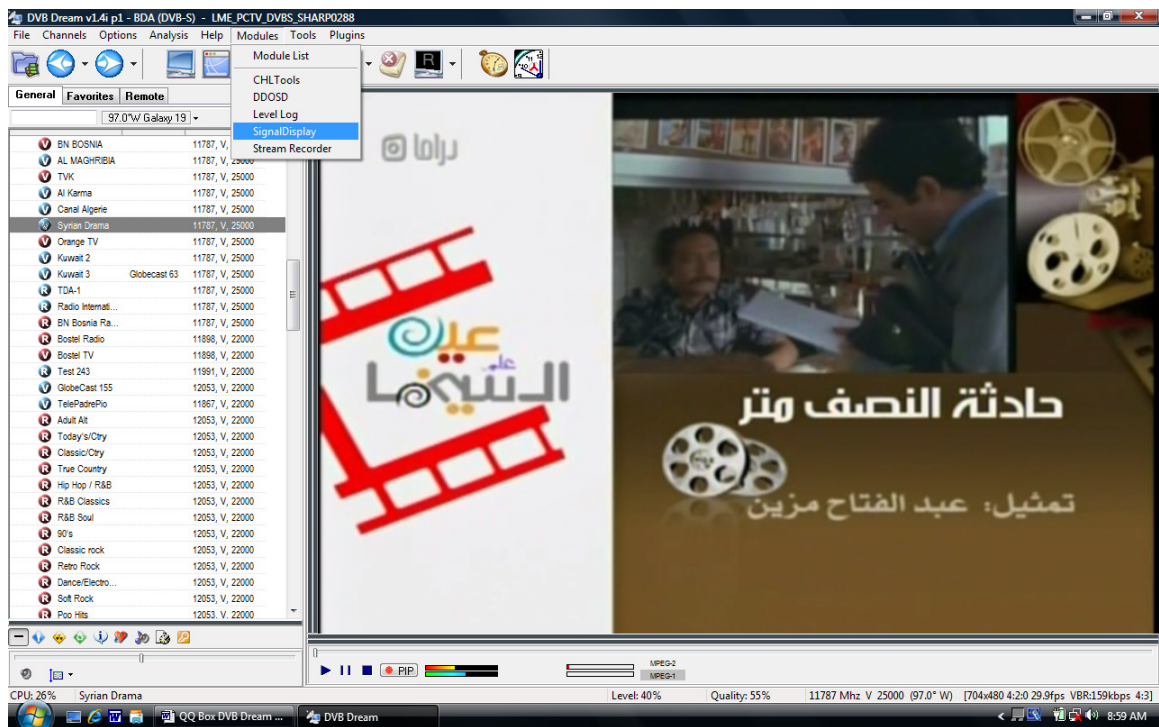


When scanning is complete you will see a tally of “V” Video “Free To Air” or “FTA”. Click “OK”

Click on this Icon.



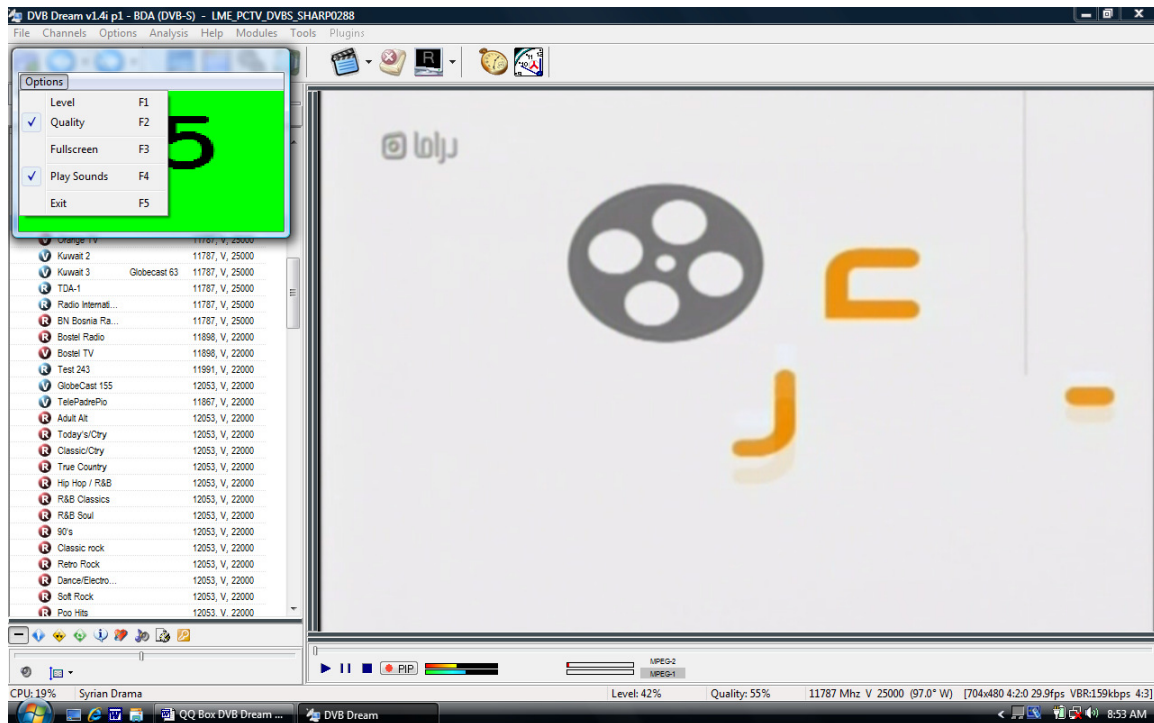
In the “Video” POP Up Window you can select your Codecs, or just use default. Click “OK”



Select “Modules” and cursor to select “SignalDisplay”



This is what you use to peak your dish and LNB/F setup. The higher the number the better the signal.



You may want to take your laptop and QQ Box out to the dish for fine tuning. Audible signal strength announcements are available by clicking on “Play Sounds”.



On the left hand side of the screen is displayed your channel list.

Trouble Shooting

Reset QQ Box:

If the QQ Box hangs up, you can safely reset it using this procedure.

Close all programs.

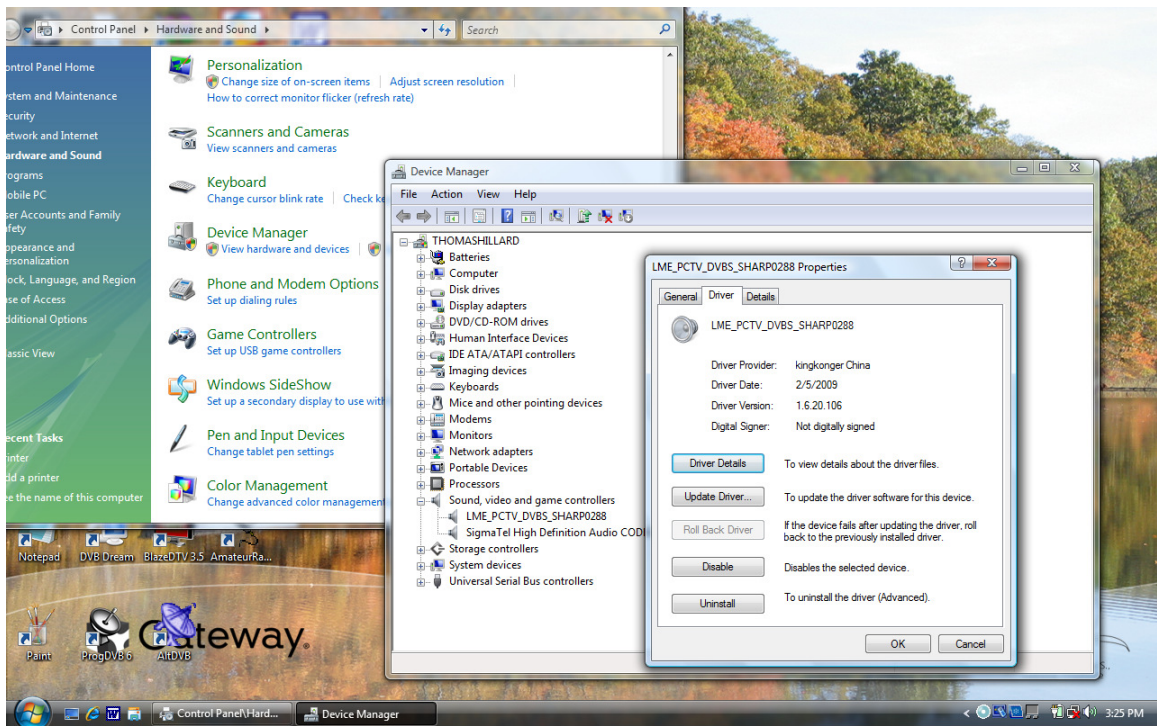
Remove the power cord to the QQ Box and then connect it.

If this does not cure the hang state, then;

With Windows Vista Desktop open:

- 1- Remove the power cord.
- 2- Remove USB cord.
- 3- Apply power cord.
- 4- Apply USB cord.
- 5- You will hear the windows USB connection confirmation tones.

If you remove the USB cord when DVB Dream is open the LME Driver will crash Vista. Just restart windows to correct the blue screen. Select Normal Start.



Follow this path to check the status of the LME Driver. This is shown in Windows Vista and is normal running, other Windows software will differ.