

QQ Box BlazeVideo Manual

Quick Start
Microsoft Windows Vista

01-09-2010

Thomas Hillard – Author

Hardware Installation:



Boot your Laptop, from the Desktop view.

Connect the LNB cable from the dish to the “LNB In” on the QQ Box.

Connect the Laptop to the QQ Box with the USB Cord.

Connect the Power Supply cord to the QQ Box.

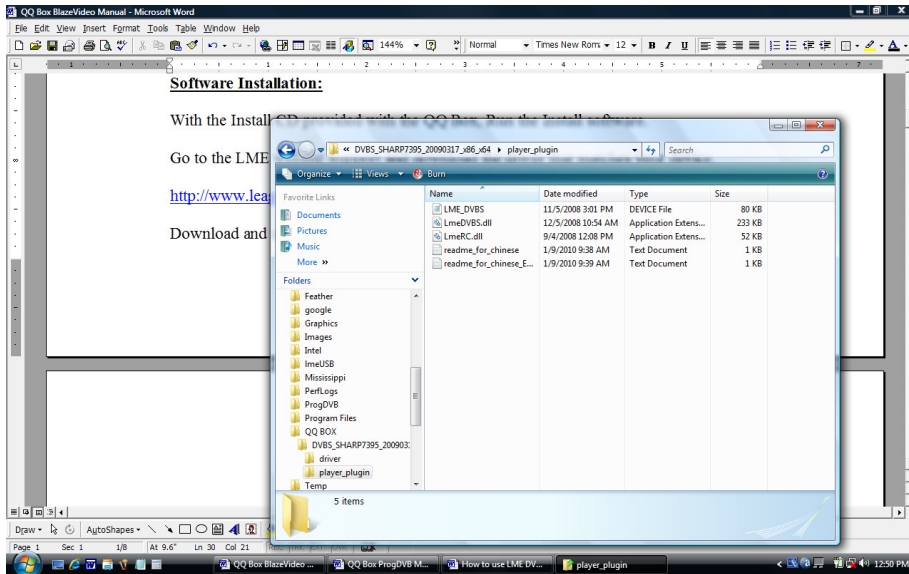
Do not connect the QQ Box Power Supply to the power yet.

Software Installation:

With the Install CD provided with the QQ Box, Run the Install software.

Go to the LME website Support and download the driver that matches your device.

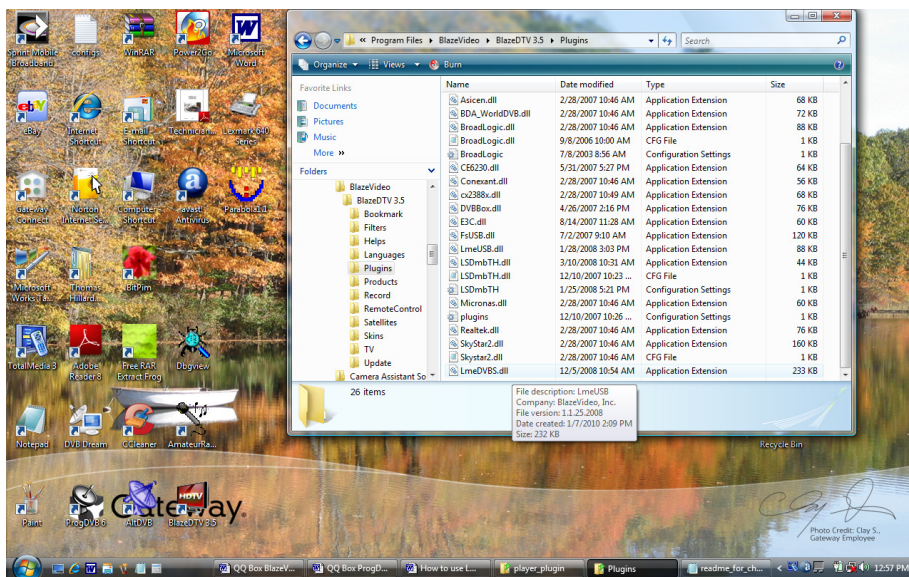
<http://www.leaguerme.com/English/ShowArticle.asp?ArticleID=62>



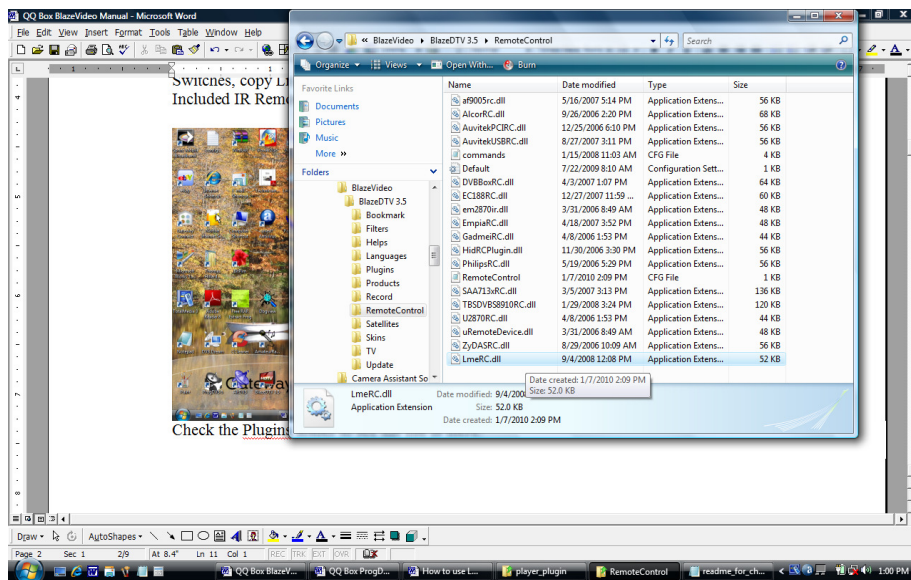
Download and unpack the file shown in window path.

Plug-ins for BlazeVideo (Tested in BlazeVide2.5 ,3.5,4.0):

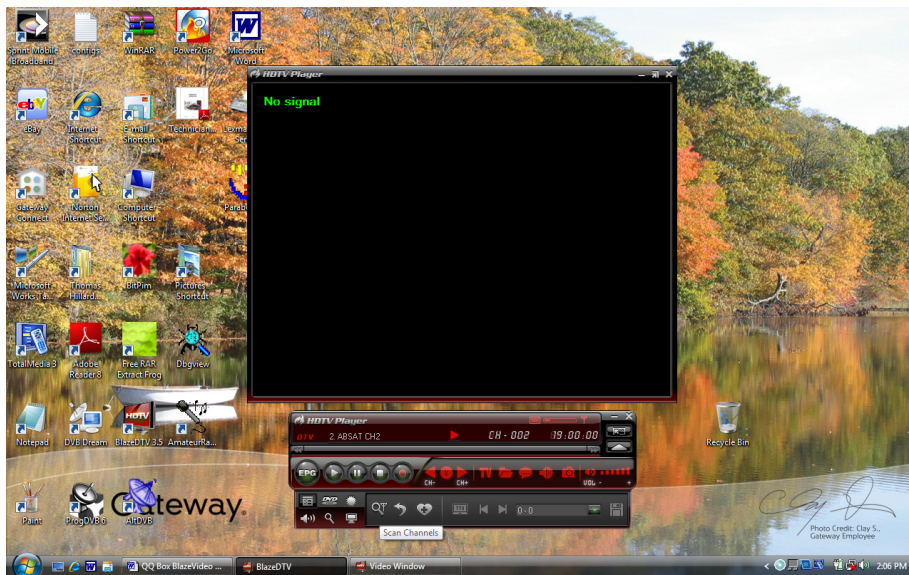
Copy the LmeDVBS.dll to the **Blaze Install Path\Plugins** folder to support LNB DISEqC Switches, copy LmeRC.dll to the **Blaze Install Path\RemoteControl** folder to support the Included IR Remote Control.



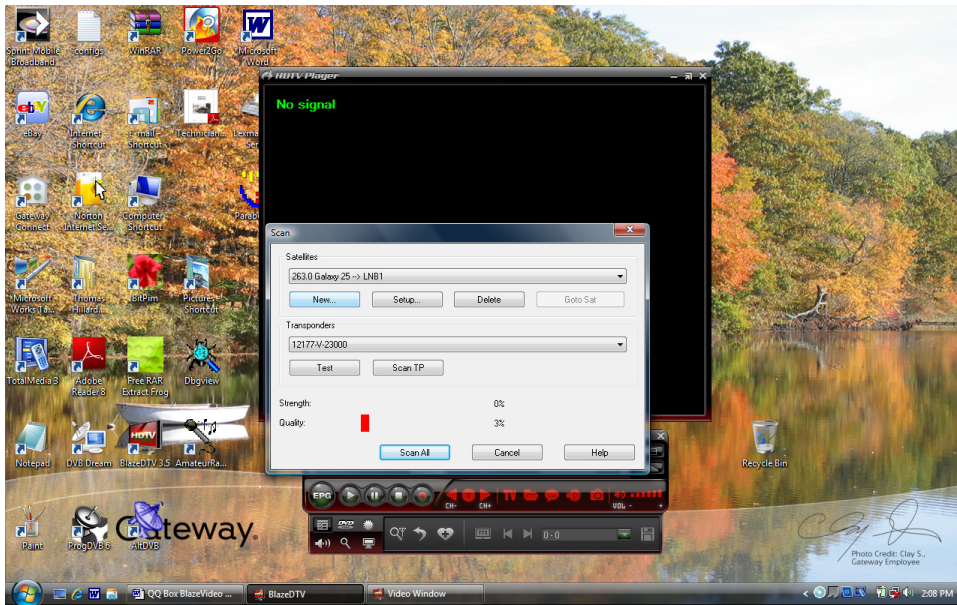
Check the Plugins folder to see the file is there.



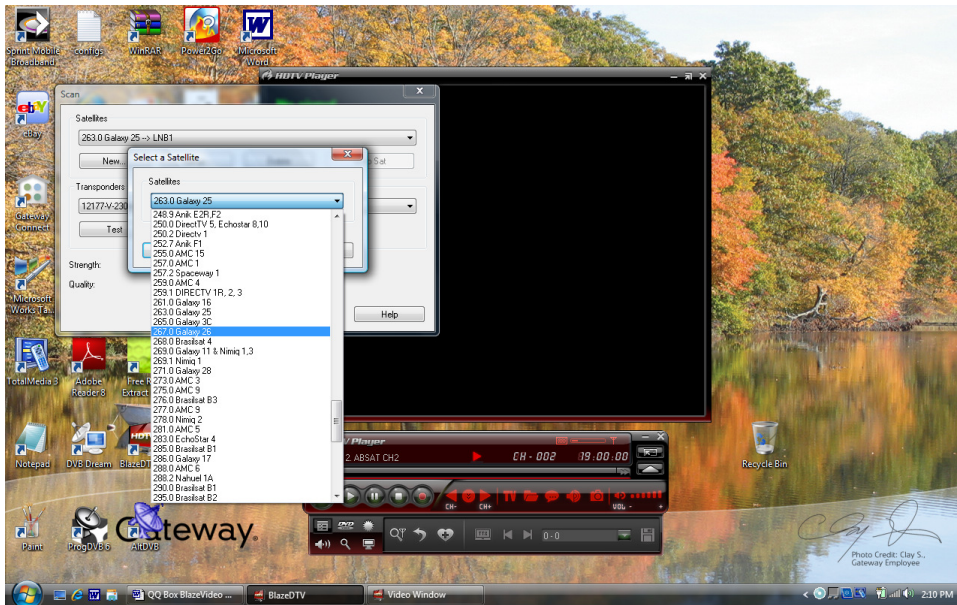
Check the RemoteControl folder to see that this file is there.



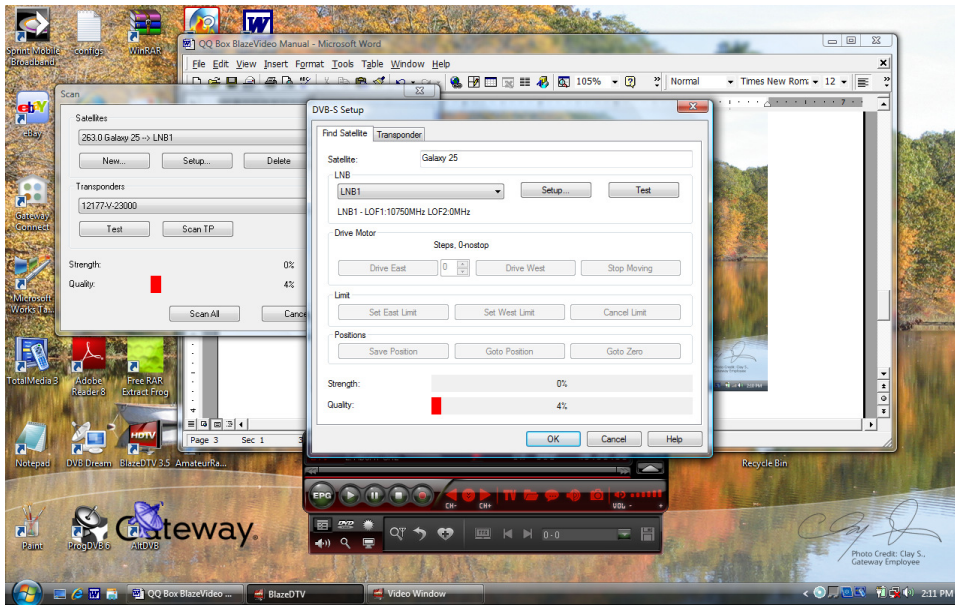
When you launch the BlazeVideo program you will be asked if you want to Scan Channels. Click Yes.



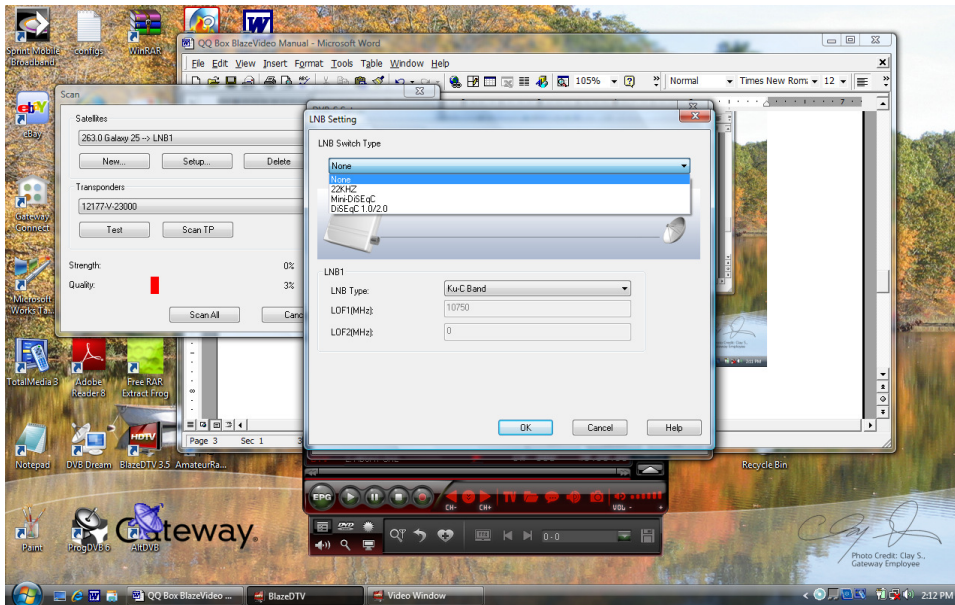
Click on New.



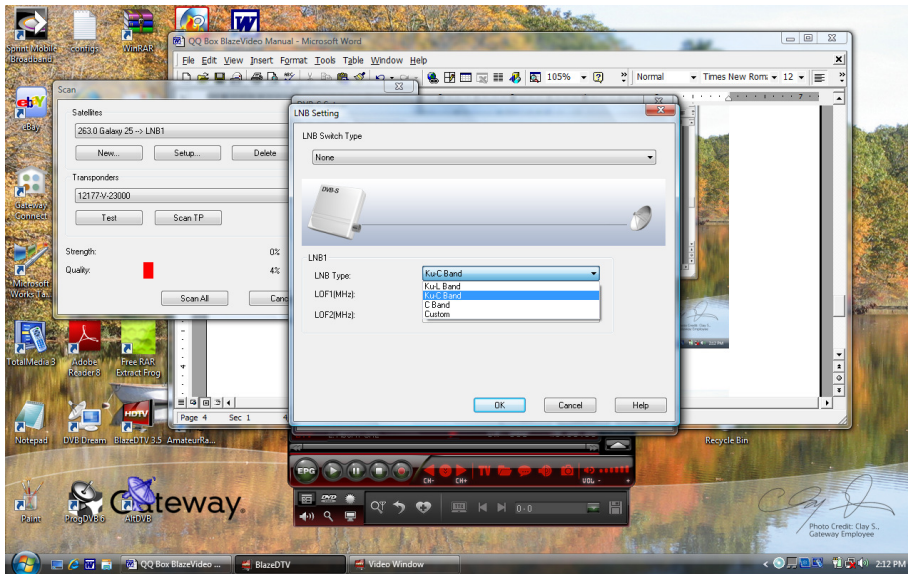
Select a Satellite of interest.



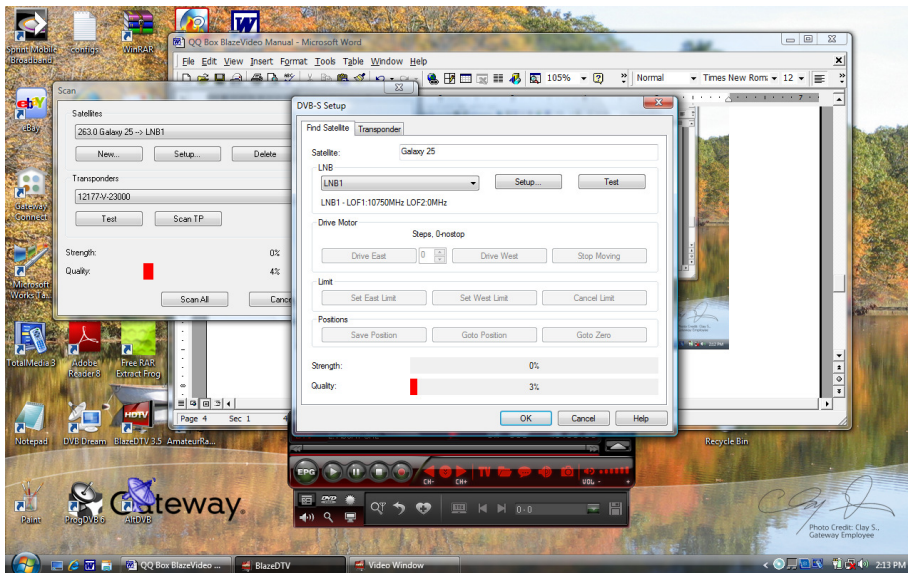
Now Click on Setup and this DVB-S Setup window will pop-up. Click on Setup in this window to get the DISEqC and LNBf settings screens.



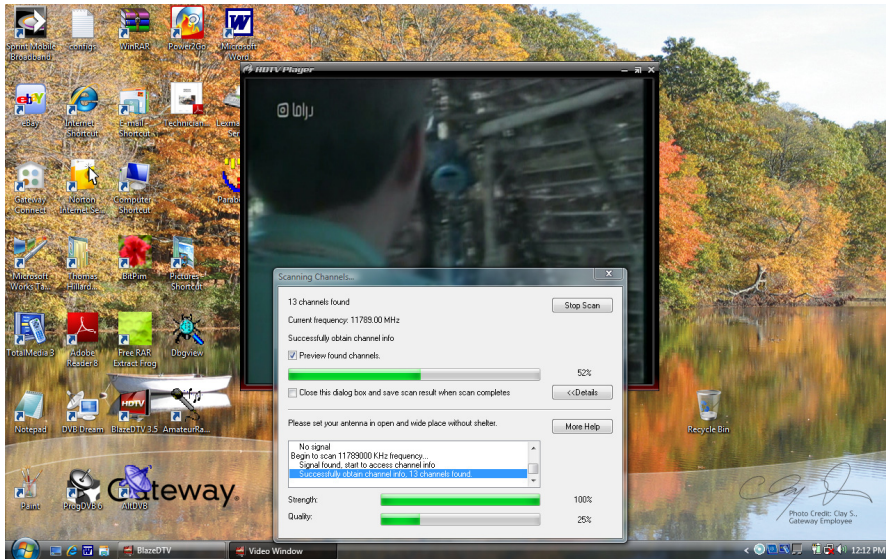
Select None for one dish with one LNBF.



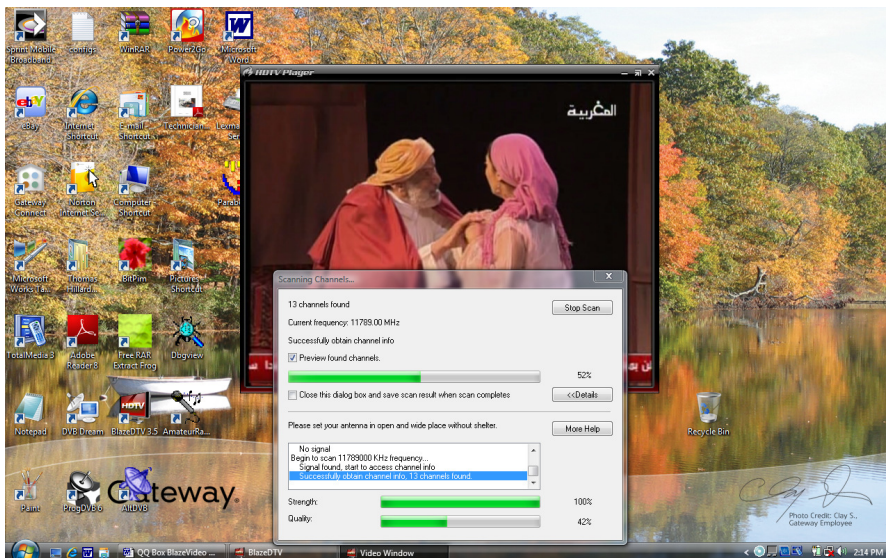
Select KuCBand for Ku Linear or Circular 10750 LNB. Click OK.



Confirm the Setup and Click OK.



Scanning Channels will pop-up. Click on <<Details and Preview to watch progress and see snip-its of the video.



When scanning is complete you may watch TV.



When Scanning is complete you can use your remote control to change channels and adjust volume.



Click on the Zoom button on the remote to toggle between full screen and Desktop view.

Trouble Shooting

Reset Software:

It may be necessary to close and restart BlazeVideo to clear a fault condition.
It may require a reload of the LME Driver to clear a malfunction.

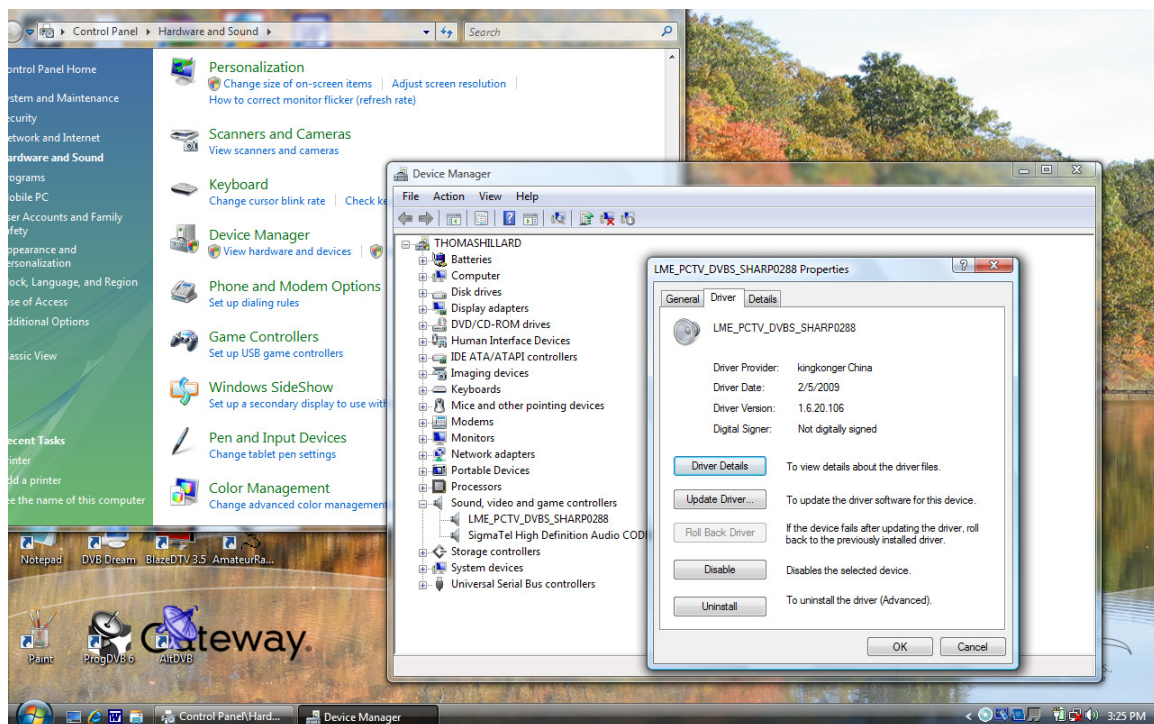
Reset QQ Box:

If the QQ Box hangs up, you can safely reset it using this procedure.
Close all programs.
Remove the power cord to the QQ Box and then connect it.
If this does not cure the hang state, then;

With Windows Vista Desktop open:

- 1- Remove the power cord.
- 2- Remove USB cord.
- 3- Apply power cord.
- 4- Apply USB cord.
- 5- You will hear the windows USB connection confirmation tones.

If you remove the USB cord when DVB Dream is open the LME Driver will crash Vista.
Just restart windows to correct the blue screen. Select Normal Start.



Follow this path to check the status of the LME Driver. This is shown in Windows Vista and is normal running, other Windows software will differ.

Dish Installation

QQ Box as a sensitive accurate Satellite Meter.



Fine tuning the dish is much easier with the QQ Box. Display the channels signal quality from DVB Dream “Scan Transponder” window.

- 1- Plumb the pole at two places, 90 degrees apart. Be very accurate.
- 2- Find your Longitude (www.satsig.net) and your Latitude.
- 3- On one side of the motor find the Latitude scale and set correctly.
- 4- Disregard the “Elevation” scale.
- 5- Place a level on the motor bracket and adjust for level front to back.



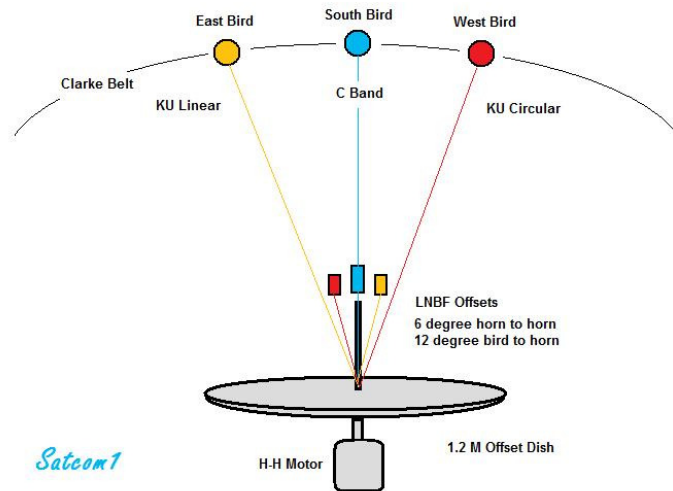
- 6- Level across the top of the motor bracket.
- 7- Go to; <http://www.esrl.noaa.gov/gmd/grad/solcalc/>
- 8- Find your Solar Noon. Enter your coordinates and time zone.
- 9- Record your Solar Noon.
- 10- Mark a vertical center line on your dish with a pencil.
- 11- When Solar Noon arrives, you adjust the dish East or West to line up the LNBF feed horn shadow to the pencil line.

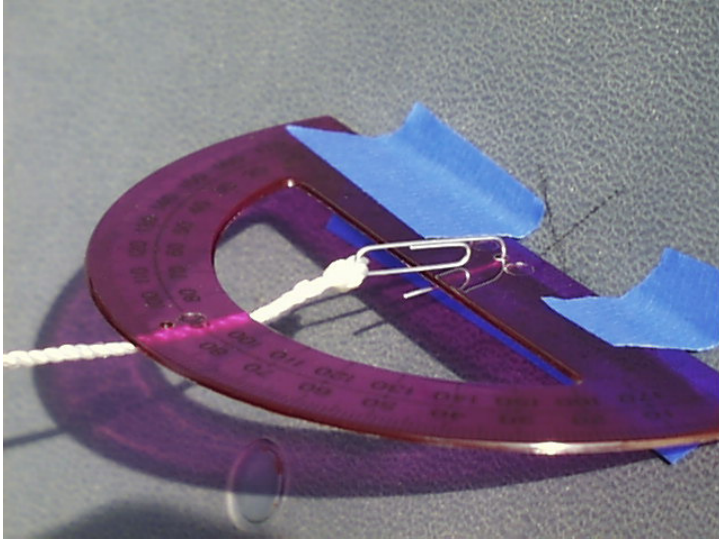


- 12- Move your dish with the motor to your “True South” That is the satellite closest to your longitude.
- 13- Select a strong transponder and see if you have a signal.
- 14- With a signal showing is the Signal Quality bar in software, tip the edge of the dish East or West to see the strongest signal. Adjust the dish.
- 15- Tip the dish top with your finger to get the direction to max. the signal.
- 16- Use your dish elevation adjustment to peak this level.
- 17- You may repeat these steps until you are satisfied.

Offset LNB:

To get the most from your dish, you can add a Circular 10750 LNB to capture, In The Clear (ITC) Channels such as NASA. If you use a 6 degree offset, when the motor moves the dish to AMC 21 the offset lnb will be looking at 119 West for NASA.





By using a protractor you can determine where the 6 degree offset is.

