

How to retain your satellite list and channels while upgrading the firmware on your MicroHD

NOTE: Upgrades to firmware can improve the performance of your MicroHD, but directions must be followed precisely in order to avoid system boot failures. Be advised that the instructions below will take approximately ten minutes to complete. As a steady source of power is needed, do not attempt updating during times of possible outages (strong storms, peak electrical use times such as the middle of the day in a very hot summer, etc.).

1. Download and unzip the latest firmware update file. Next, open the unzipped folder, and copy and save the update (.abs file) onto your USB drive on your computer. After the file is saved, properly close out and remove the USB drive. Skip this step and steps 8 - 13 if updating by satellite and instead follow the video instructions here: http://youtu.be/_OOib2g9Q_Y



Illustration 1: You may use a simple USB drive like this for these instructions (image courtesy of sweetclipart.com)

2. Insert the USB drive into the MicroHD rear panel USB port.



Illustration 2: The USB 2.0 port is labeled on the back of the MicroHD.

Saving your current settings (Satellite and Channel lists)

3. Press the Menu key then press the Down Navigation Arrow key to select and highlight the Tools Menu icon.
4. Press the List/OK key to display the Tools Menu screen.

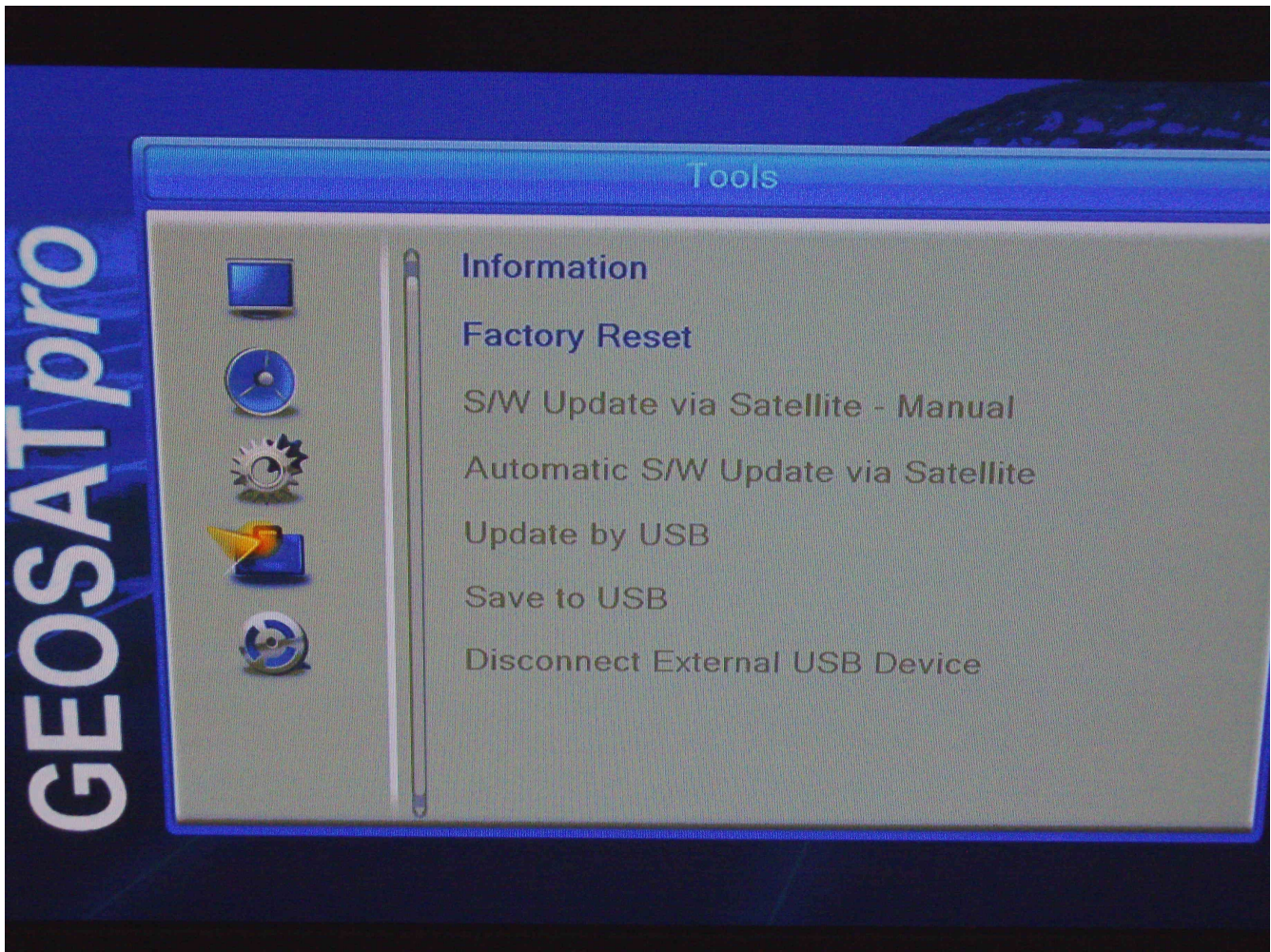


Illustration 3: The Tools Menu. (Photo courtesy of Iceberg @ SatelliteGuys.us)

5. Press the Up or Down Navigation Arrow key to Select "Save to USB."
6. Select "userdb" under Save Mode and then select "Start" to save the MicroHD User Data Base (.udf) file to the USB drive. This will only take a second or two to complete.
7. Press Exit on the remote.

Updating firmware by USB drive

8. Select "Update by USB" in the Tools menu. A video for steps 8 – 13 is shown here: http://youtu.be/0G_1DRndtOE
9. Select "Allcode" on line one ("Upgrade Mode") and on line two ("Upgrade File,") choose the .abs file on your USB drive you just saved. Then go to line three and select "Start." This may take longer, possibly 2 or 3 minutes. Do not worry if it pauses at around 99% for quite some

- time – this is normal. Wait until the process has completed before continuing.
10. Press Exit on the remote.
 11. In the Tools menu, select "Factory Reset." Select "Yes."
 12. Physically unplug your receiver for 10 seconds (you don't have to push "power").
 13. Reconnect the receiver and allow it to boot normally. Wait until it rediscovers your USB drive before continuing.



Illustration 4: Remember that pushing "Power" is not the same as physically disconnecting the receiver. Get into the habit of disconnecting your power supply anytime you make changes to your satellite setup.

Restoring your settings (Satellite and Channel lists) – Optional step

14. Press Menu key, then press the Down Navigation Arrow key to select and highlight the Tools Menu icon.
15. Press the List/OK key to display the Tools Menu screen.
16. Press the Up or Down Navigation Arrow key to Select "Update by USB."
17. Press List/OK key to display Update by USB screen.
18. With the Save Mode line highlighted, Press the Right Navigation Arrow key to select "userdb."
19. Press the Down Navigation Arrow key to highlight Upgrade File.
20. Press the Right Navigation Arrow key to select the desired User Data Base (.udf) file. Example: USERDB.udf. (Warning: make sure that your .udf file was made with firmware version 0.13 or newer).
21. Press the Down Navigation Arrow key to highlight Start.

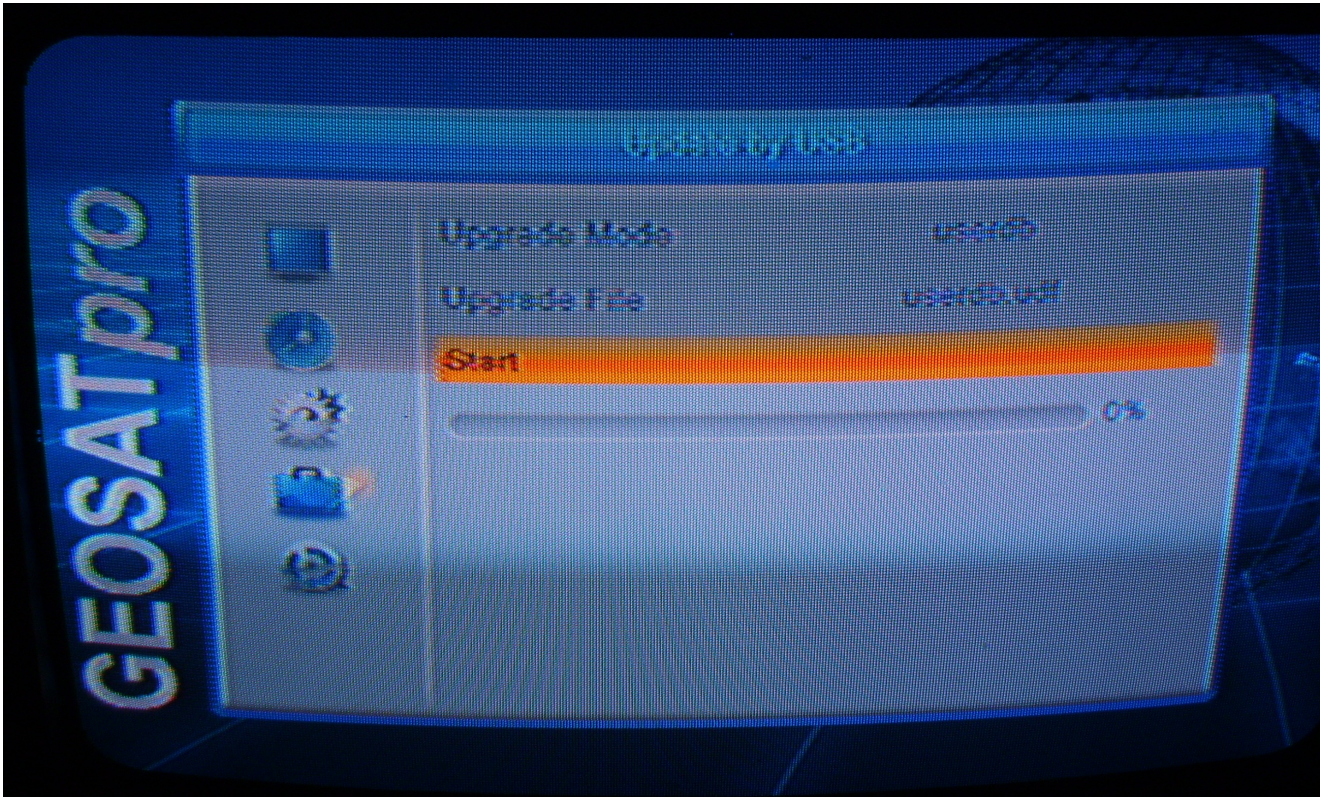


Illustration 5: Restoring your channel and satellite lists is simple! (Photo by northgeorgia @ SatelliteGuys.us)

22. Press the List/OK Key to initiate the User Data Base file transfer to the MicroHD.
23. When the warning screen appears, select Yes if you wish to continue with the User Data Base loading or No to escape without updating the receiver.
24. The update is now in process and cannot be interrupted. During this process it is critical that the power is not interrupted or shut off. A power interruption may corrupt the User Data Base file transfer and cause the receiver to be inoperable.
25. Once the Update by USB is complete (status bar at 100%), the MicroHD power will reboot automatically.
26. After rebooting, physically disconnect the power supply for 10 seconds (you don't need to push "power"), then reconnect it.

Resuming normal use

27. If the system is motorized with USALS settings, the USALS installation location's Longitude and Latitude will need to be re-entered.
28. The latest firmware has been installed with your old channel and satellite lists retained. You may now use the MicroHD normally.

For further support of the MicroHD, visit the FTA Receiver Support Forum free of charge at <http://www.satelliteguys.us/forums/262-FTA-Receiver-Support>