

## Setting up mc2xml to download multiple channel lineup

mc2xml is a very versatile program for downloading xmltv data that can be used to schedule recordings of TV programs. This guide was written to assist true FTA satellite enthusiasts and explain how to [integrate aTV with Mytheatre](#) to schedule recordings, it is not a complete guide.

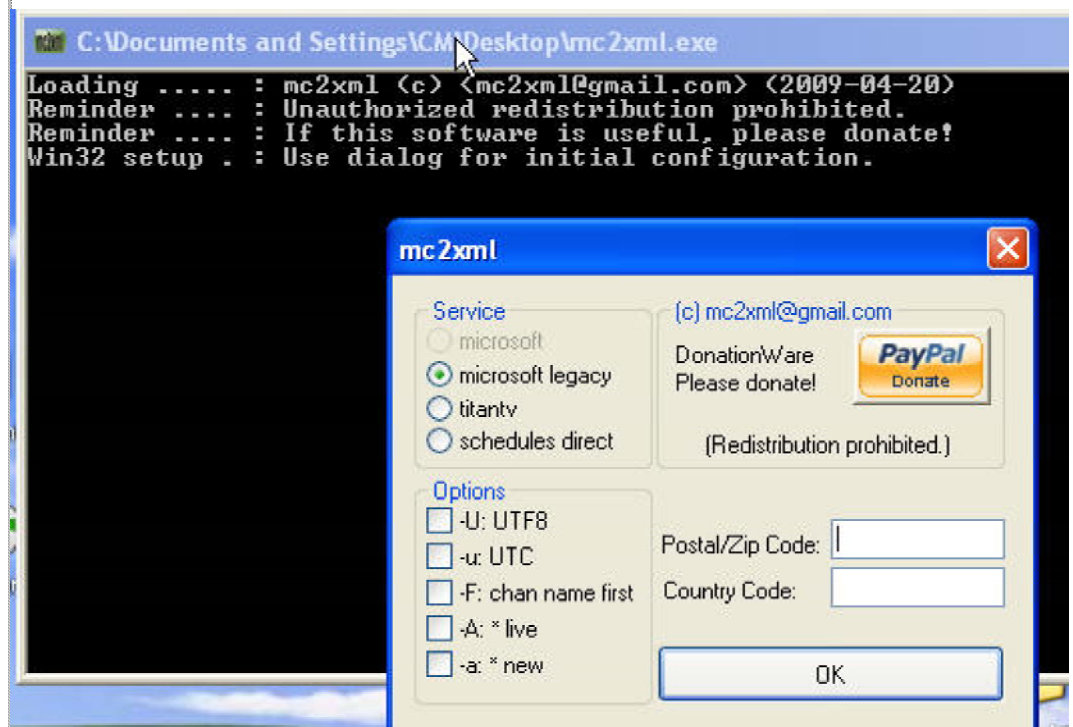
A full description of all of mc2xml features and instructions can be found at the authors website. If you find it useful, please consider a donation.

aTV can be downloaded at the authors website. Information on setting it up is in the aTV.properties file which has to be edited to suit your configuration, further instructions are in the aTV.properties file.

## Basic Operation

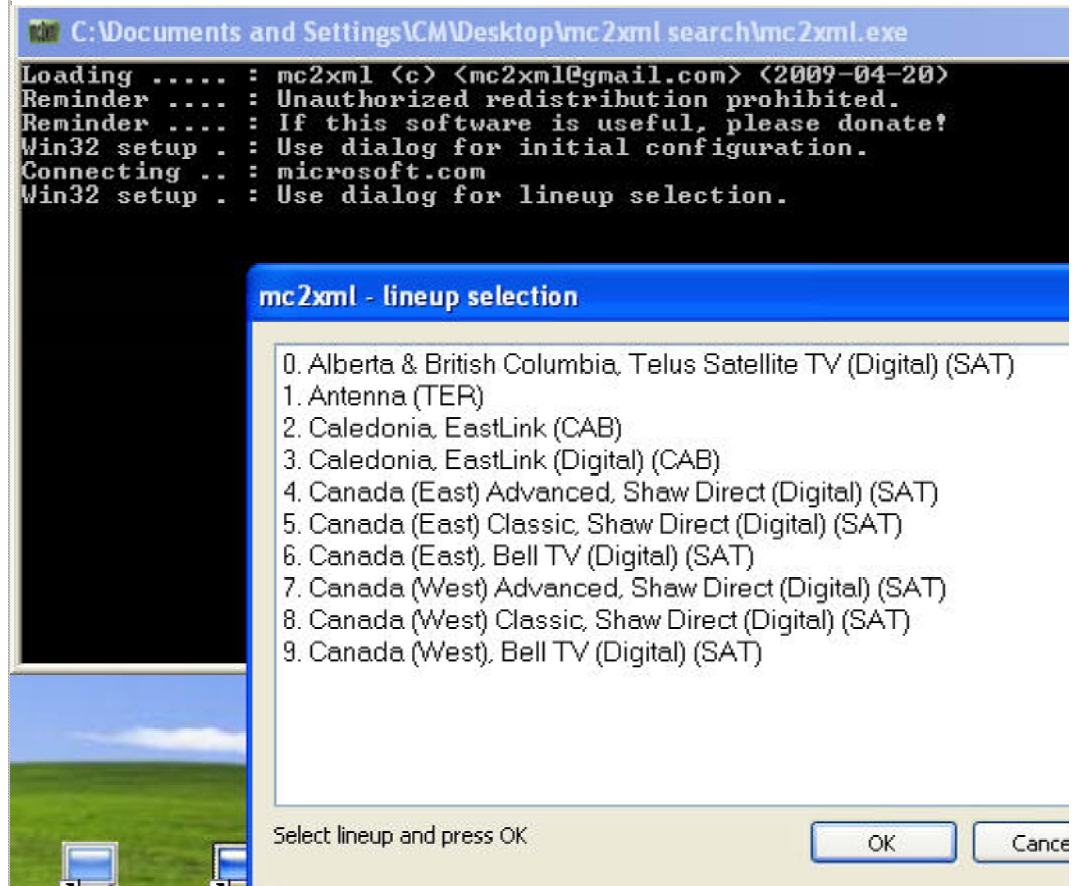
[Download mc2xml](#) and after you have unzipped the file you will have a file called mc2xml.exe. It works best if you place it in a new folder. I have mine placed in a folder called mc2.

Once placed inside a folder double click on mc2xml and a window like this



Enter your zip/postal code and country code, leave the service on "microsoft legacy". See the mc2xml home page for a list of the options, the only one I need to change is the listing of a new show in my guide.

Click OK and after a few seconds another window will pop up asking you



Select the desired line up and click OK, depending on your line up mc2xml Kb to over 10Mb of data so this may take a while on dial up.

When the process is complete your mc2xml folder (or whatever you called

*mc2xml.exe*

*mc2xml.dat*

*xmltv.xml*

xmltv.xml this is the data for your tv guide, you can open this file with your  
mc2xml.data this is the file that your line up details have been saved in to  
if incorrect delete this file and run mc2xml again with different line up details

If your needs are fairly basic you are finished.

\*\*\*\*\*

### **Writing a batch file and changing the name of the output file.**

To realize the full potential of mc2xml we have to write a batch file instructing  
the xml output file

There are numerous options as outlined on the mc2xml website, as an example

the name of the output file name from the default xmltv.xml to tvguide.xml

Open windows Notepad and enter the following line

```
mc2xml -o tvguide.xml
```

Save to the mc2xml folder as a text file but enter the filename suffix as .bat

We will have to use the same procedure several times with different lines

To open the batch file later for future editing it will be necessary to right click on the file and change the extension from .bat to .txt. Windows will ask you if you really want to do this, click yes

\*\*\*\*\*

### Creating a Channels file

Odds are that you will not want all the channels that are available in a line up, that only the channels we want are included, to do this simple open a Notepad file and enter the channel you want on a separate line.

Save the page as mc2xml.chl in the mc2xml folder, when we later progress the .chl file will have to have the same name as its respective line up.

\*\*\*\*\*

### Renaming Channels

If you want to change the Channel call sign letters that appear in the lineup, with, for example WGBXDT2 to PBS World. All you have to do is create a new file with the 2 names with a :

```
WGBXDT2: PBS World
```

Repeat on a separate line for all the channels you wish to rename and save the file can include channels from different line ups.

\*\*\*\*\*

### Multiple Line Ups.

If your really lucky you will only need one line up for your zip code, like a typical FTA satellite enthusiast that this "how to" is aimed at you will need. Before attempting to create a multiple line up batch file I would first run a lineup and identify the zip code, line up and channels that you require, this will use. In this example I have used.

Line1 zip code 59716 Terrestrial digital lineup, with channel 3 in the Lineup  
Line2 zip code 02093 Medfield, Comcast digital with channels 15,58,111,

Line3 zip code 93130 Digital Terrestrial lineup with channel 23 in the Lin

Now we have to instruct mc2xml to download the first line up and write a .xml file and then download the next line up and channels we want and combine the .xml file with another name and so on. This is an example of a 3 line up ba

```
mc2xml -D Line1.dat -C Line1.chl -o Line1.xml
mc2xml -D Line2.dat -C Line2.chl -I Line1.xml -o Line2.xml
mc2xml -D Line3.dat -C Line3.chl -I Line2.xml -o tvguide.xml
```

My mc2xml folder will contain these files

Name	Size	Type
mc2xml.ren	1 KB	REN File
Line1.chl	1 KB	CHL File
Line2.chl	1 KB	CHL File
Line3.chl	1 KB	CHL File
mc2xml.bat	1 KB	MS-DOS Batch File
mc2xml.exe	1,436 KB	Application

Now double click on mc2xml.bat to run it, enter in the line up details (zip code) for each of the 3 line ups, when the download completes and the black box closes these files

Name	Size	Type
Line1.chl	1 KB	CHL File
Line1.dat	1 KB	DAT File
Line1.xml	426 KB	XML Document
Line2.chl	1 KB	CHL File
Line3.chl	1 KB	CHL File
mc2xml.bat	1 KB	MS-DOS Batch File
mc2xml.exe	1,436 KB	Application
mc2xml.ren	1 KB	REN File
Line2.dat	1 KB	DAT File
Line2.xml	2,654 KB	XML Document
Line3.dat	1 KB	DAT File
tvguide.xml	2,845 KB	XML Document

It now contains a .dat file for each lineup this will save you having to re enter change anything delete the relevant .dat file and re run.

Line1.xml will contain the xml data for the Line1 station lineup, Line2.xml will contain the xml data for the Line2 station lineup, tvguide.xml will contain data for all 3 lineups.

\*\*\*\*\*

## Downloads

With these examples due to copyright reasons the mc2xml.exe file is missing from the authors website and place it in the folder

**Example 1** copy of a basic 3 line up folder system minus the data and xml files above when requested or your own data in which case the .chl files will have

**Example 2** includes the data files, just run mc2xml.bat and updated xml fi  
Data for the following channels should be included

- **23 KEYTDT2 RTV**
- 15 ION
- 58 HISTORY
- 111 WMFPDT2 RTV
- 112 PBS HD East
- 209 PBS WORLD
- 237 PBS CREATE
- 243 BIO
- 3 PBS MONTANA