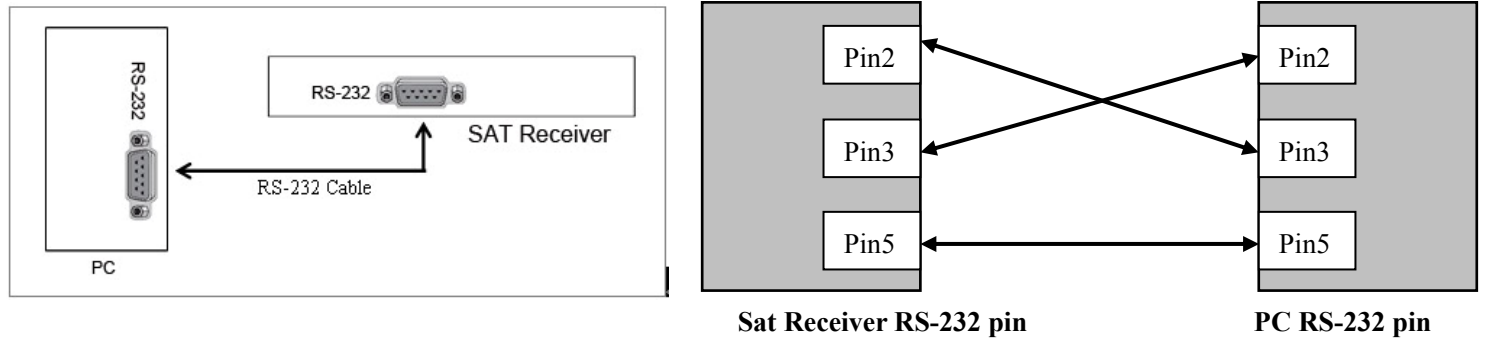


GEOSATpro DVR1100c, DSR100c, DSR200c

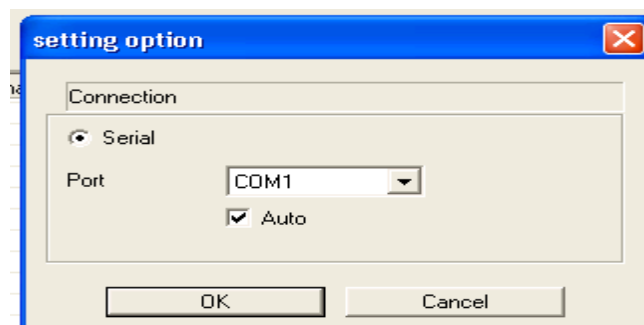
Satellite Receiver Firmware Updating Tool

Manual Update Firmware via RS-232 – PC to Satellite Receiver

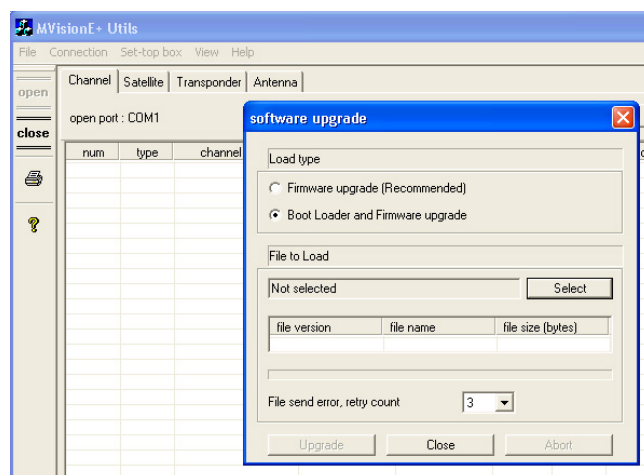
1. Connect PC to satellite receiver using a serial RS232 Null Modem type cable.



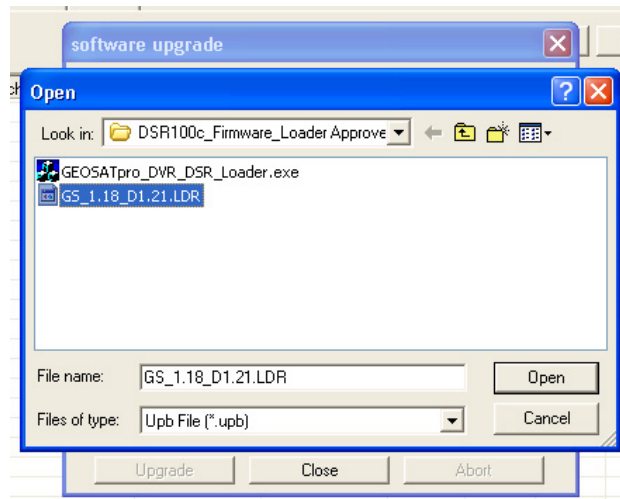
2. Launch GEOSATpro_DVR_DSR_Loader.exe software.
3. Confirm Serial Connection. Pull down Connection and verify “Connect” is established and grayed out. If serial port connection is not set, select “Connect” and set the serial connection port for the receiver updating. COM1, COM2, etc. and press “OK”



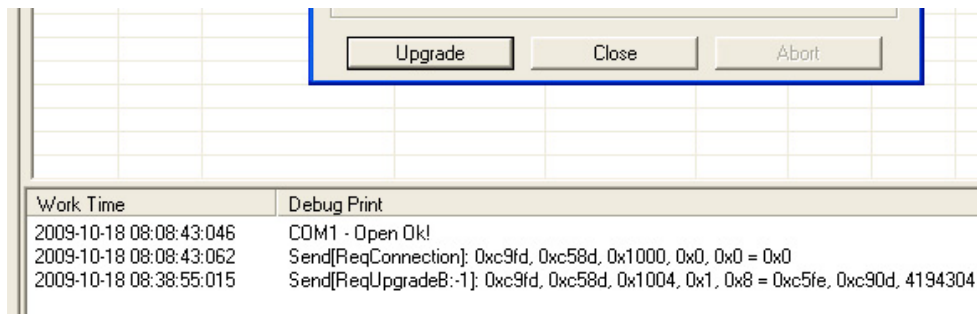
4. Pull Down Set-top box and select “Software upgrade”.
5. Select “Boot Loader and Firmware upgrade”.



6. Click “Select” to locate and open the new firmware file (*.LDR file). Type “*” in the File Name field if new firmware file is not visible. Select the new file and click “Open”.



7. Click “Upgrade” to ready the PC for the transfer.



8. Power ON the satellite receiver Master Power Switch. “100” should display on receiver’s front panel. If “100” is not displayed, toggle the receiver’s Master Power Switch to display “100”. The computer loader window will display Debug Print loading “ex_send” and lines of displays will scroll as the file transfers. **Warning:** Do not interrupt the transfer! Interrupting the transfer could make the receiver inoperable and require repair by the manufacturer.
9. Wait approximately 5 minutes. The “ex_send” scrolling lines will stop and display "exception".
10. Close the loader window.
11. Close GEOSATpro_DVR_DSR_Loader application.
12. Power the satellite receiver Master Power Switch OFF. **Note:** Before powering the receiver, GEOSATpro_DVR_DSR_Loader window box MUST be closed.
13. Power satellite receiver Master Power Switch ON.
14. Perform Factory Default function on the receiver.
15. Firmware update is now complete.