

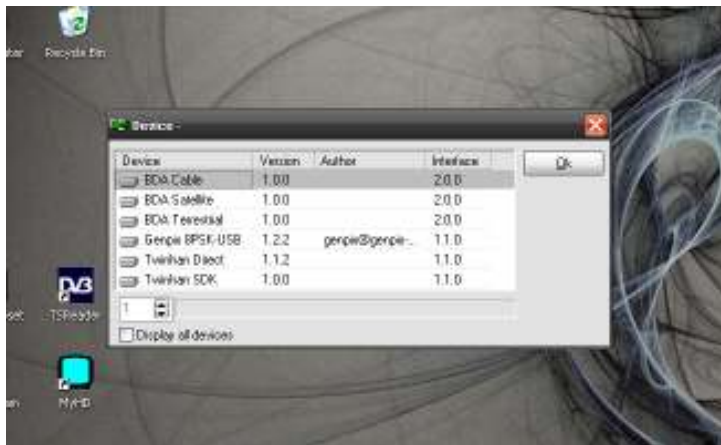


DVBDream Quick Setup Guide

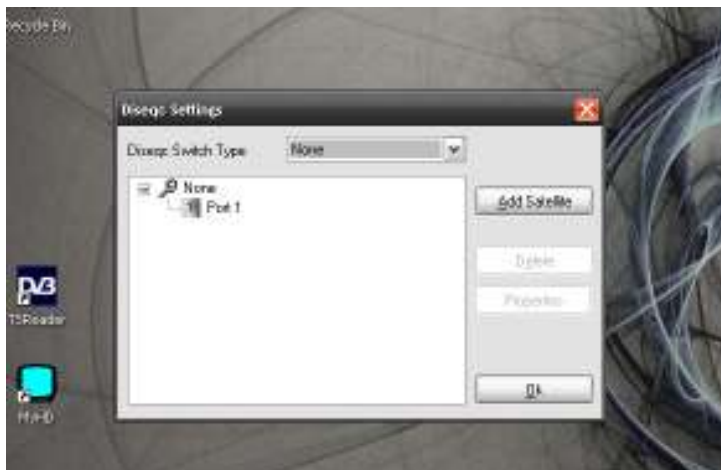
Written by digiblur

Download and perform a full install of the latest version of DVBDream from <http://www.dvbdream.org>

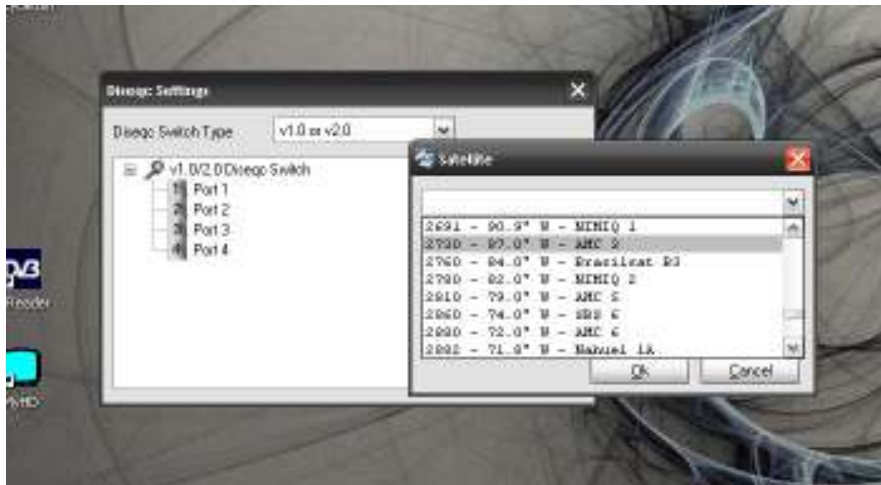
Run DVBDream



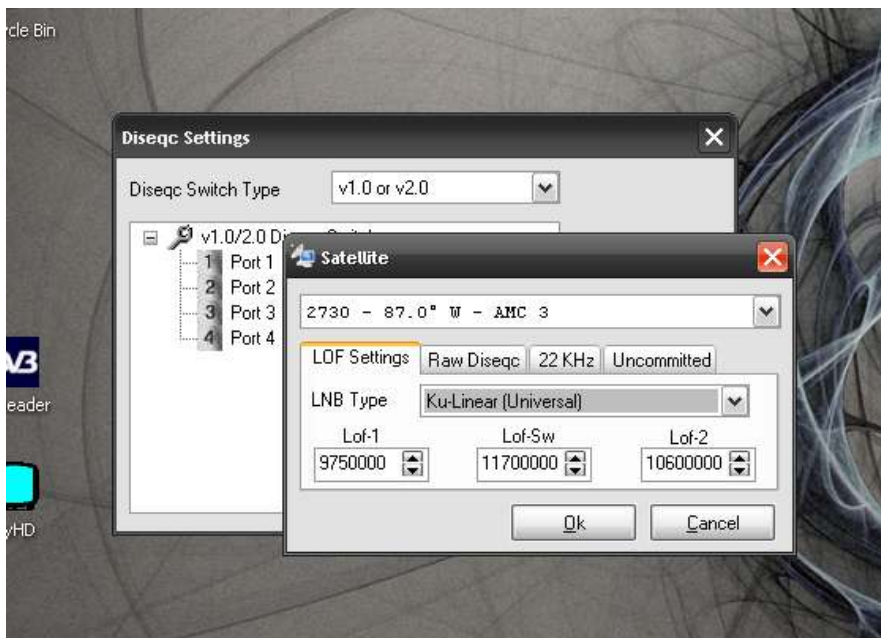
Choose the driver for the DVB device installed on the PC. Click OK.



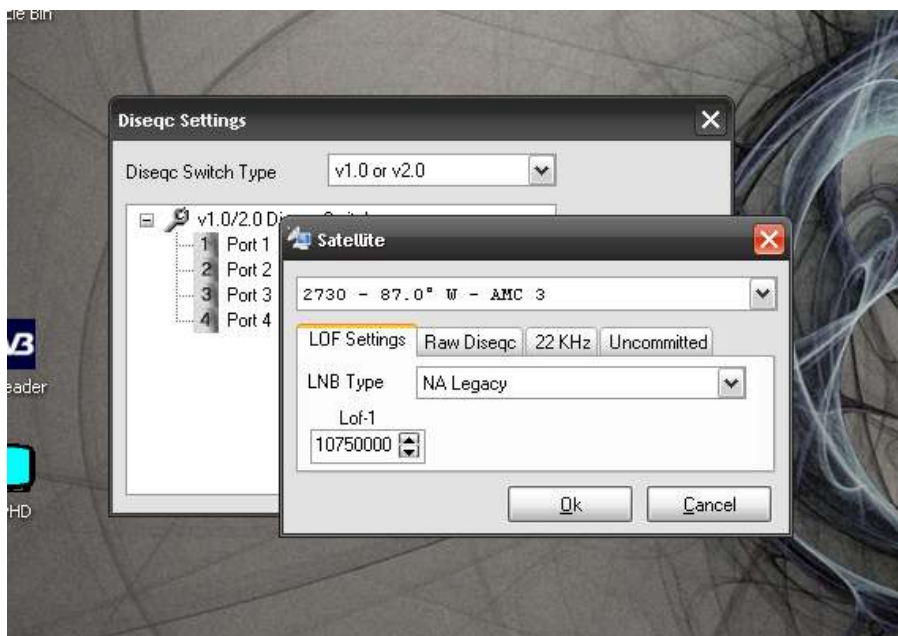
If a Diseq switch is installed, choose the type of switch installed.



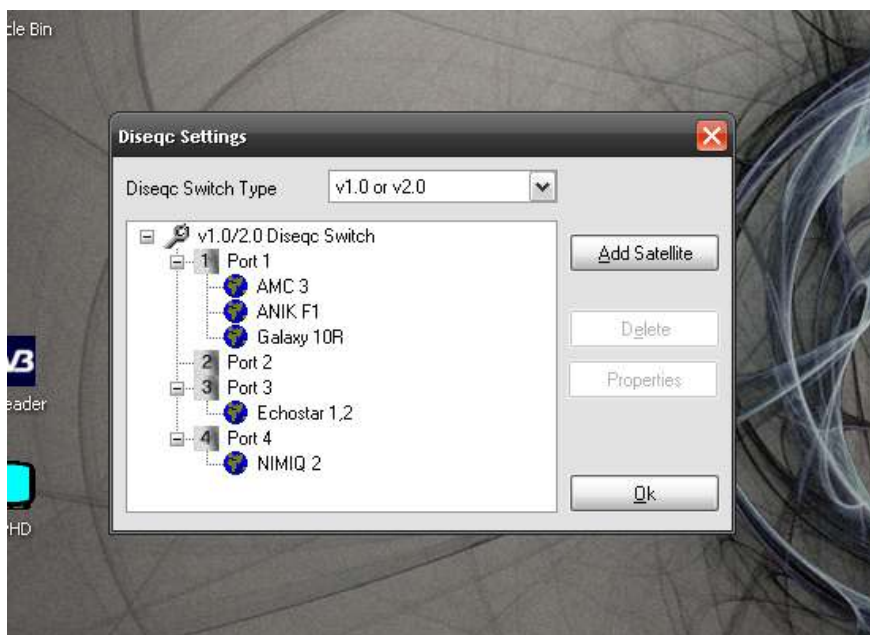
Choose the Diseqc port and click Add Satellite. If you have a motorized dish, add the multiple satellites under the Diseqc port for the motorized LNB.



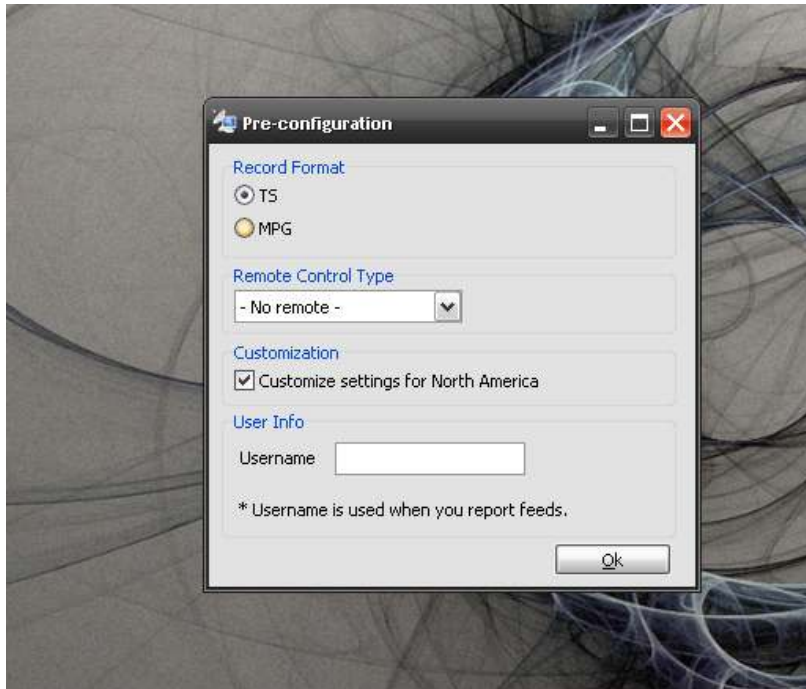
Once the satellite is chosen, select the LNB type for the appropriate satellite type. If the satellite is a KU-Linear on a Universal LNB the default setting works great.



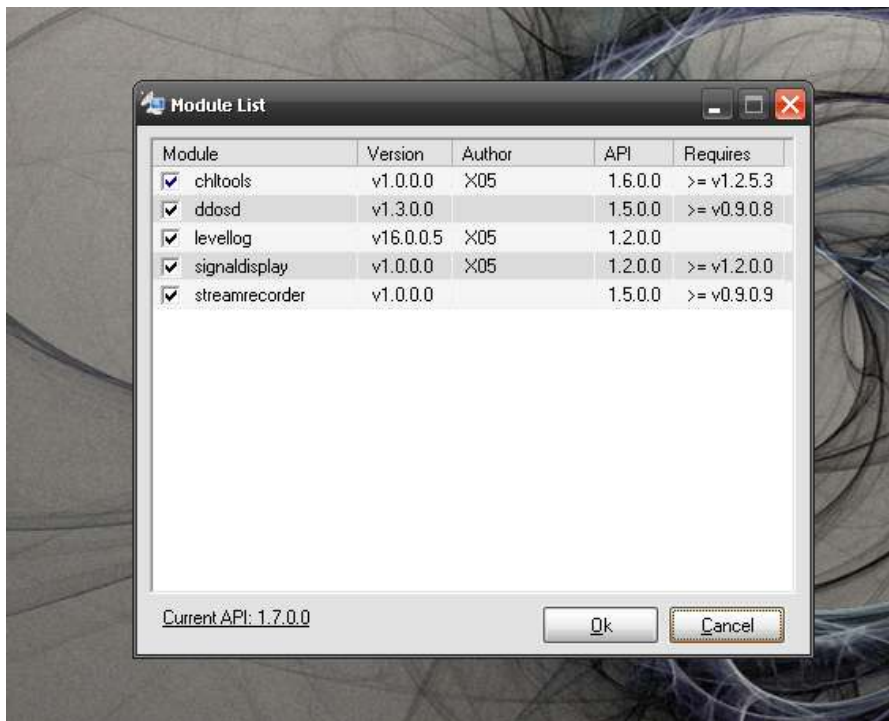
If you are using a standard KU band linear LNB, choose NA Legacy. You will need to change the Lof-1 setting to 10750000 as shown above! DVBDrum defaults to 11250000 which is used for standard circular LNBs.



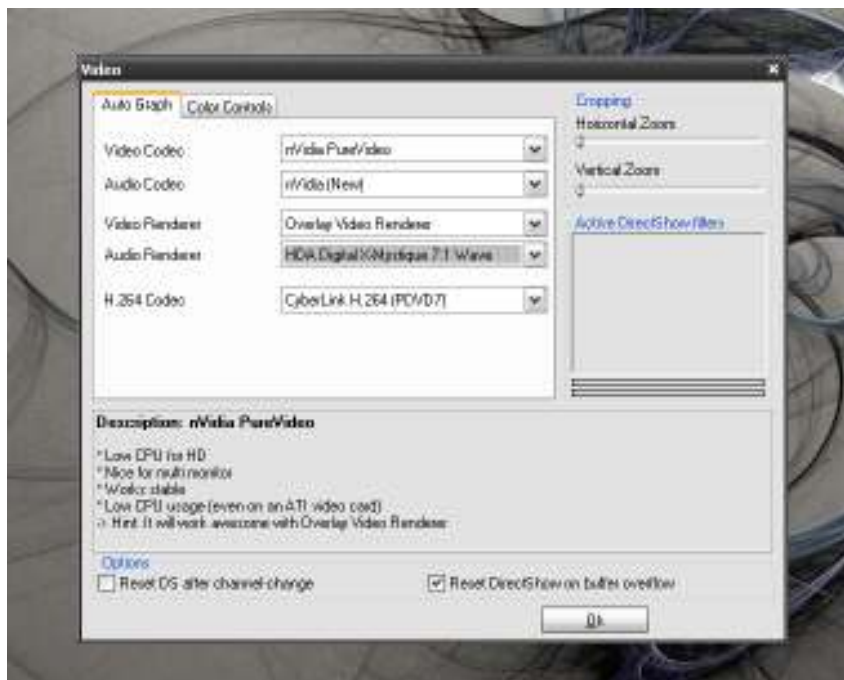
In this setup, Port 1 is the KU Linear side of the motorized dish, Port3 is a stationary dish for 148W, and Port 4 is the DBS circular side of the motorized dish. Additional satellites can be added later. Click OK.



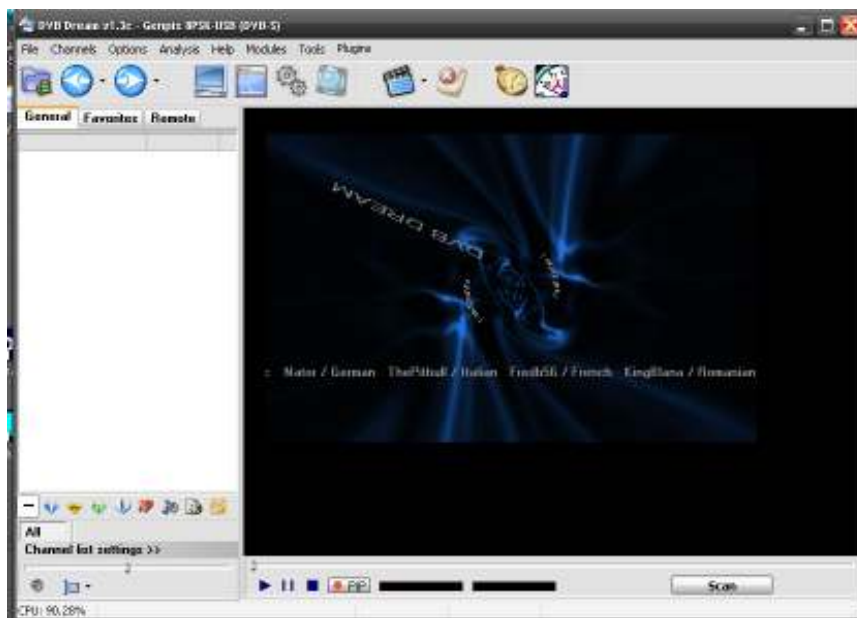
Choose Customized settings for North America



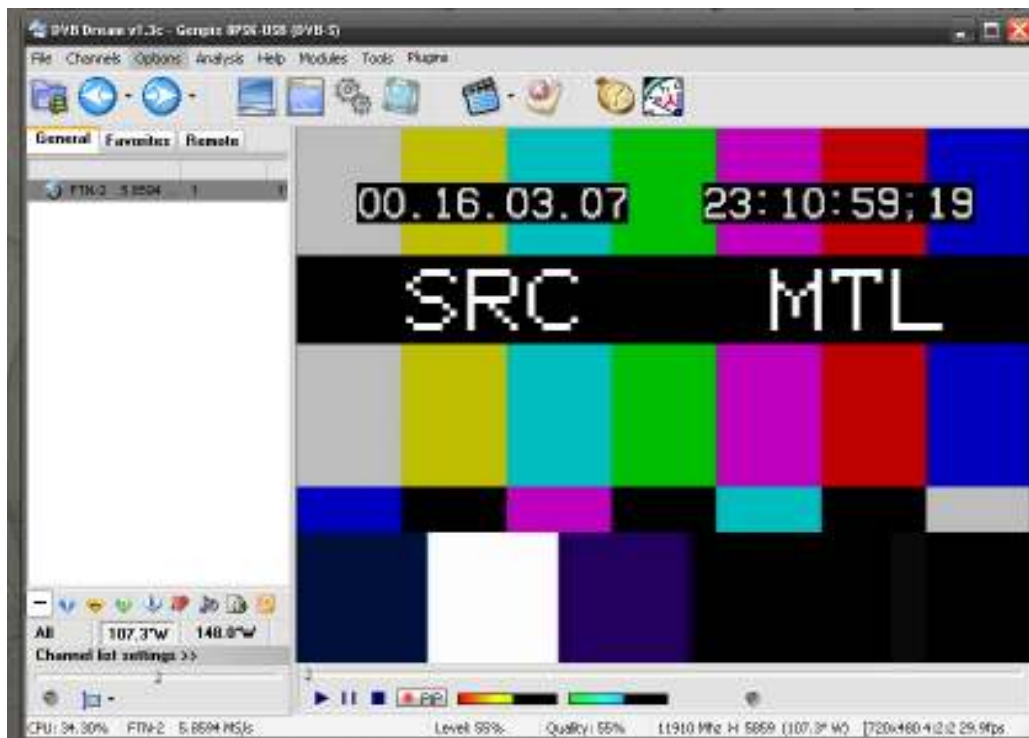
Click OK.



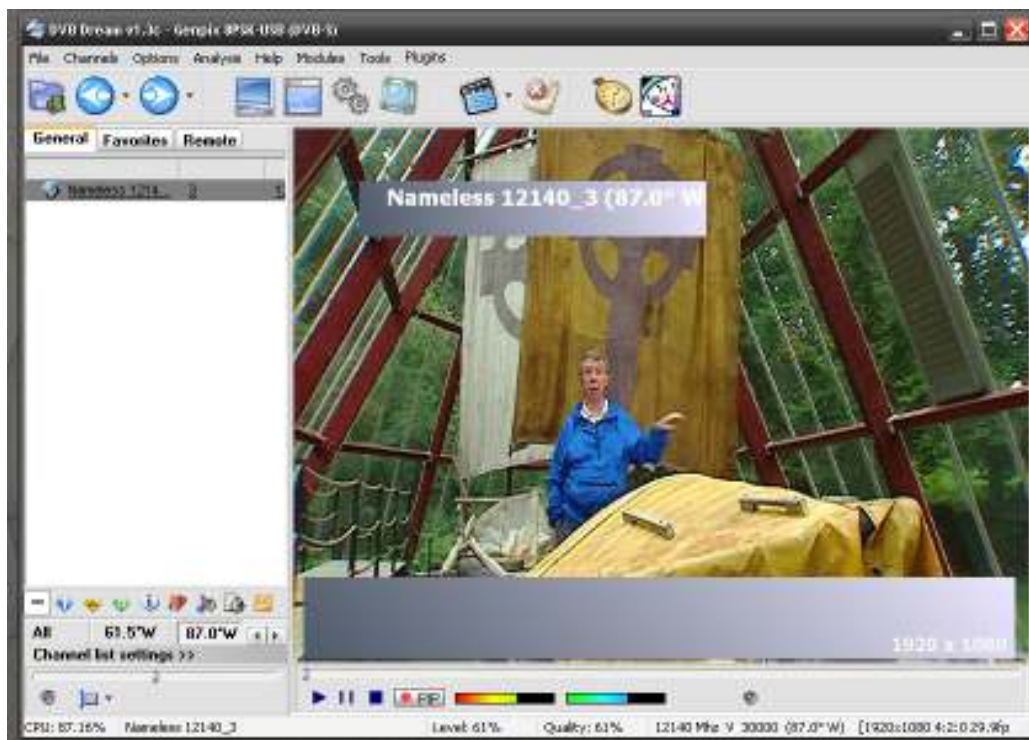
The codec setup menu! There really is no method to the madness on this page. Use what works for you with the codecs you have installed. Use Google to find additional codecs. I prefer the nVidia PureVideo codecs for 4:2:0 HD and SD content. For 4:2:2 content I use Elecard. Also try the Video Renderer options with the different codecs. Find a combination that works for your system.



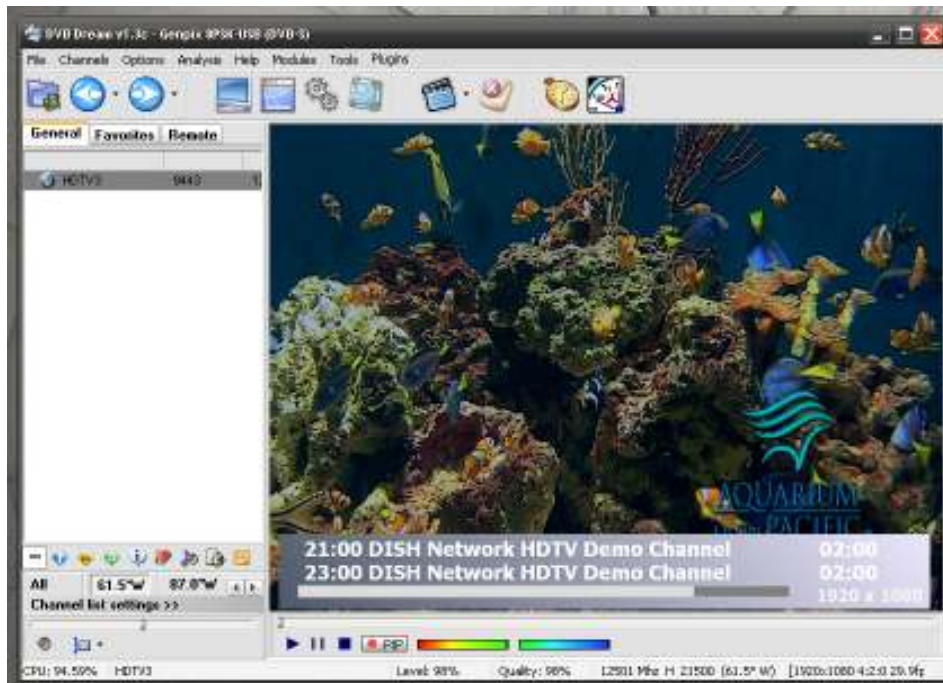
Congratulations on the install! Now Click the Scan button on the bottom right.



4:2:2 Video on 107.3W. Each satellite scanned in will have their channels added to the tab at the bottom of the channel list.



PBS HD 1920X1080i on AMC3.



DishNetwork's 1920X1080i HD Demo channel. Who needs a real aquarium?



After scanning G10R. The channels can double up due to a transponder frequency being a number or two off from another causing the duplicate channels. Be careful!



DVBDream watching 3 channels in realtime at once with the PIP option!

I only touched on a few of the main options of DVBDream. There are many other features! Don't be scared to dig around the menus. Visit the link below to several of the other features:

<http://www.dvbdream.org/forum/viewtopic.php?t=11>

If you have any questions or comments, feel free to join us in the Free to Air PC DVB area at

<http://www.satelliteguys.us>