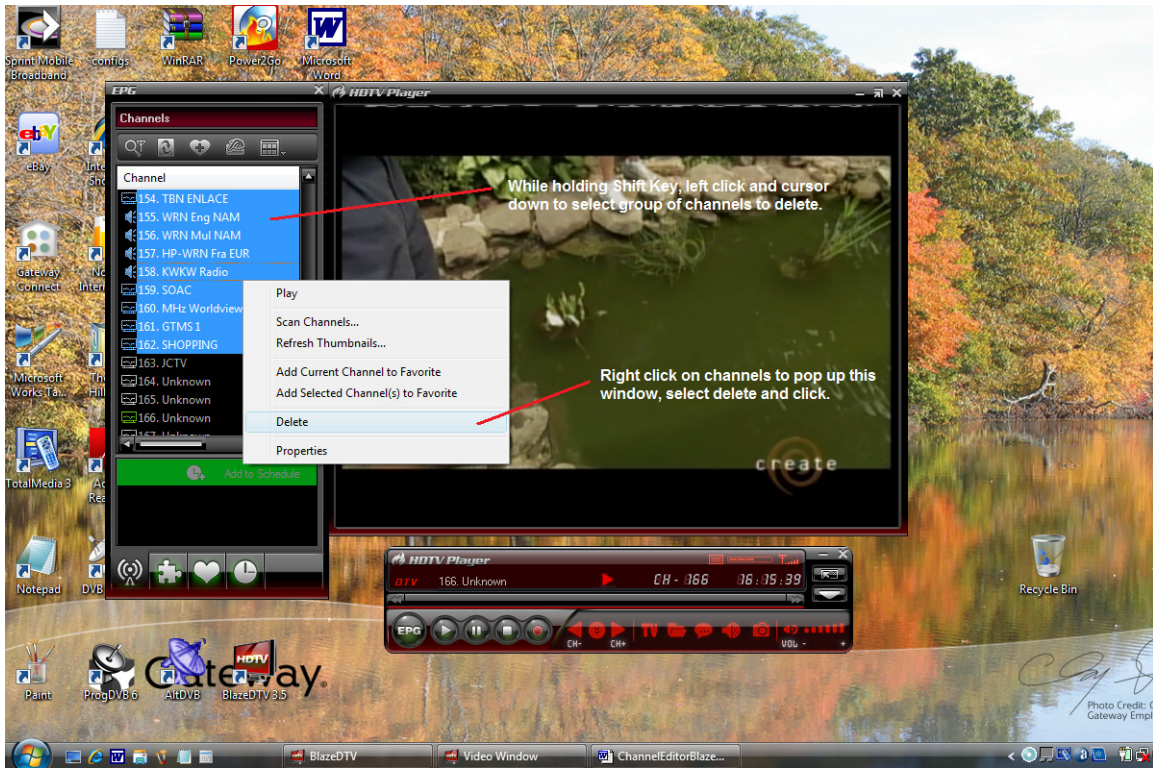


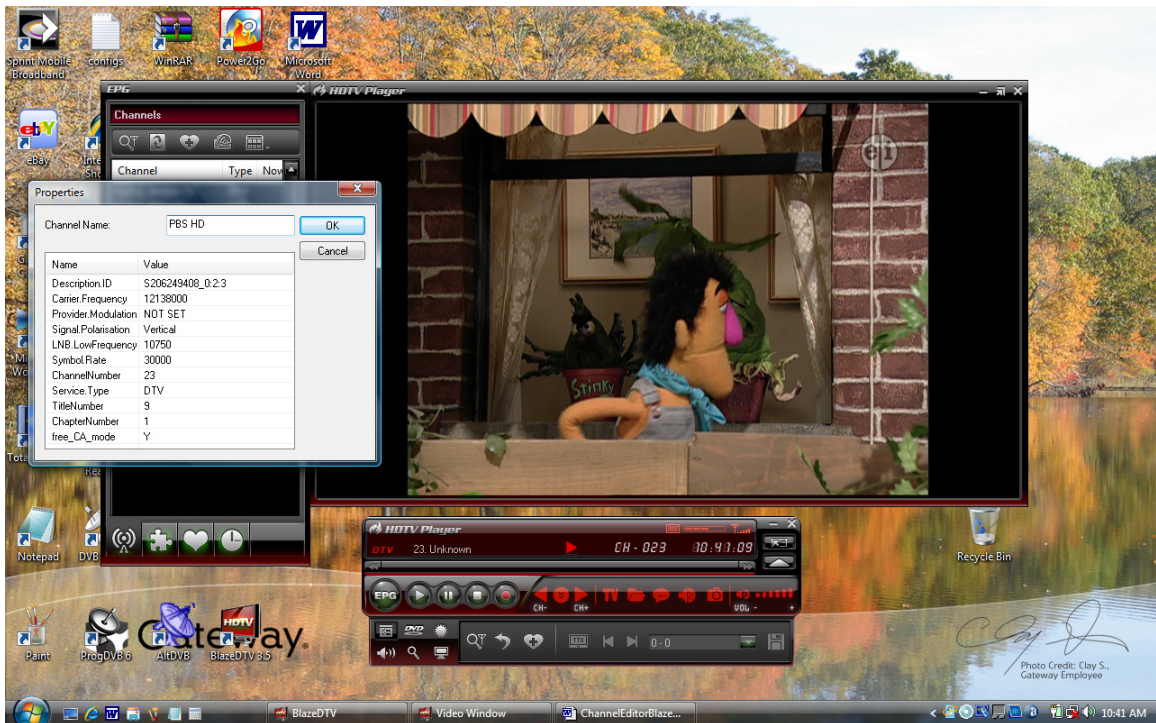
ChannelEditorBlazeDTV3.5

14-01-2010 Thomas Hillard, Author.



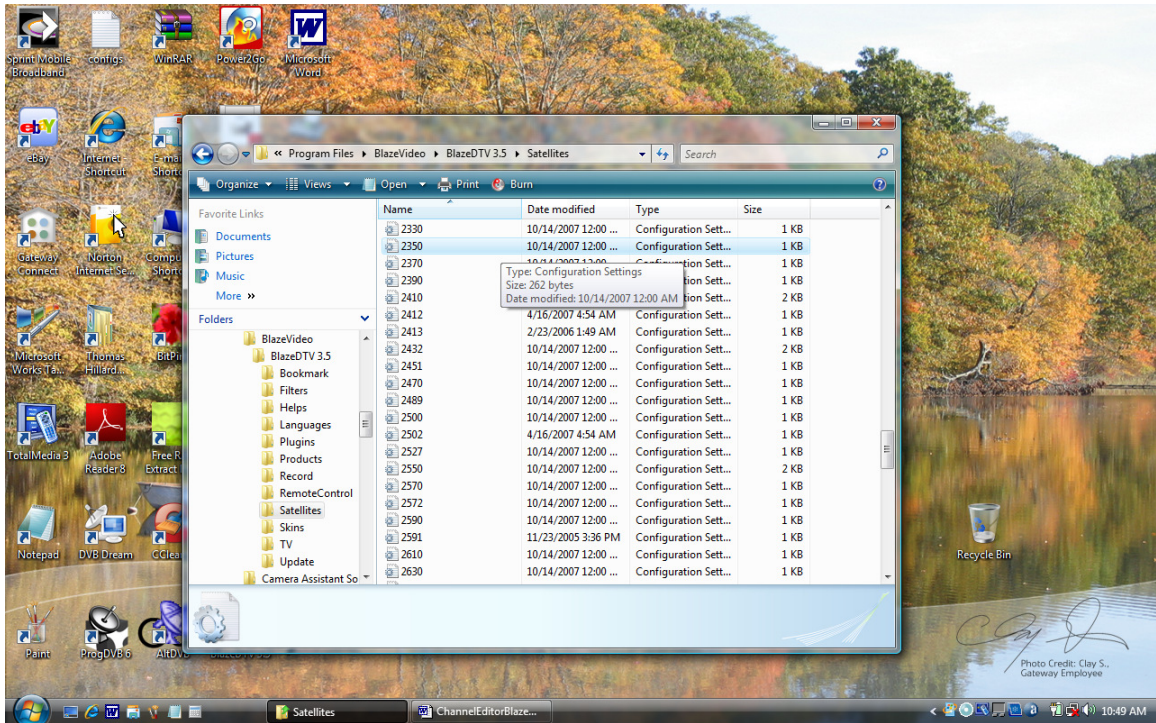


Right click on channel and then click on “Properties”.

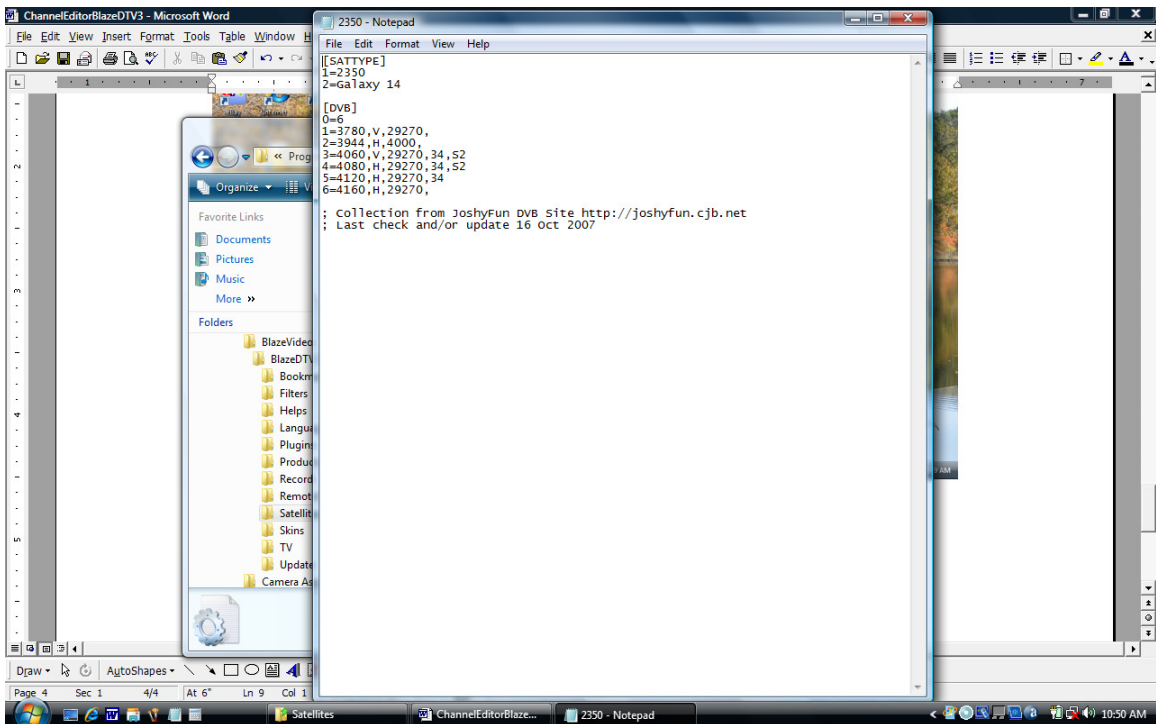


fill in new channel name and click OK.

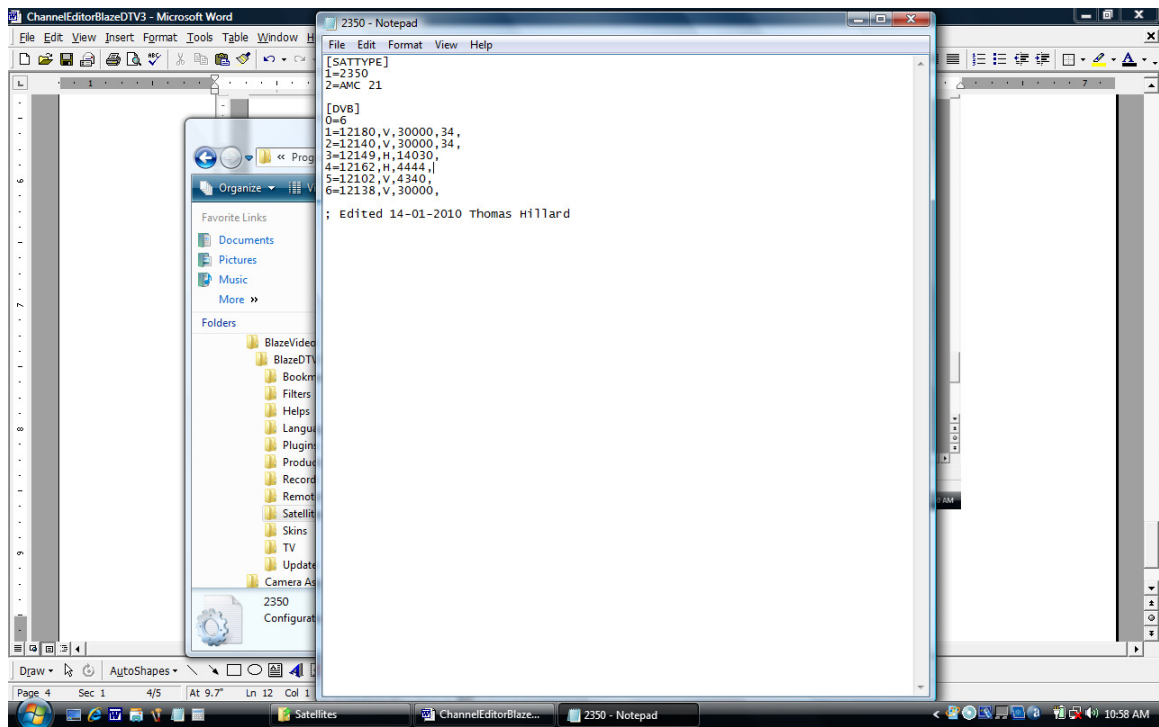
Edit Satellite Name:



Follow the path shown I the browser window and select a satellite for editing.



Channel name and transponders may be edited here and then saved.



When finished Click on File and Save.