



Reed Switch Kit

Installation

Birdview Satellite Service

1407 East Spruce, Olathe, KS 66061

(913) 829-6240

New Improved Magnet Wheel

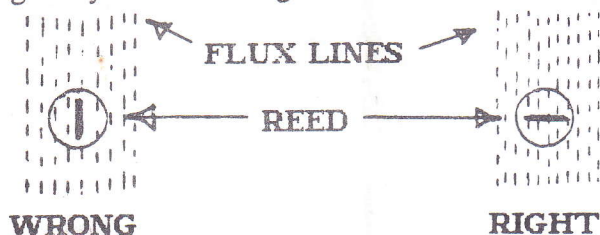
The high magnetic strength of the individual magnets virtually eliminates inaccurate counting. This Reed Switch Kit, makes it very simple to convert a Birdview Horizon to Horizon Motorized Mount from the original 10K Ohm feedback pot sensor to a pulse type, making the mount compatible with current IRD receiver antenna controllers. The kit is very easy to install. In summary, what is required is: remove the motor cover, unbolt the pot bracket, remove the small nylon gear and replace with the supplied magnet wheel, install the new reed sensor bracket, and plug the reed sensor into the cabling. The eight count magnet wheel provides positioning accuracy of $\frac{3}{8}$ of a degree, four count magnet wheels are available for Tracker IRDs, which require slow pulse counts.

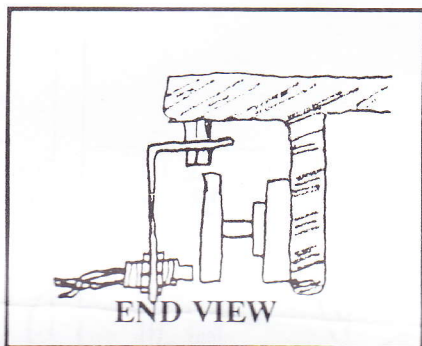
Installation

1. Install the Reed Switch Sensor in the mount bracket (as shown in reed switch sensor diagram) use jam nuts to secure in place, leave about $\frac{3}{8}$ " of sensor protruding through the bracket.
2. Remove the cover from the Birdview Motor Drive Unit.
3. Unplug the Antenna Drive cable from the 10 Turn Potentiometer.
4. For older Cast Iron A-Frame type mounts refer to attached sheet. Remove the 10 Turn Potentiometer bracket by removing the two bolts that secure the bracket to the Worm Gear Frame Assembly. **** NOTE **** this will allow the Pillow Block Cap to be removed; hold it in place while removing this bracket.
5. Remove the small plastic Pinion Gear from the $\frac{1}{8}$ " diameter pin in the end of the Worm Gear Shaft.
6. Press the Magnet Wheel onto the $\frac{1}{8}$ " diameter pin. If necessary replace the pin with the steel groove pin included in your Reed Switch Kit.
7. Replace the Pillow Block Cap, place the Reed Switch Mount Bracket Assembly over the Pillow Block so that the Switch is as close to the Magnet as possible without touching at any time during a complete revolution of the Worm Gear Shaft. Tighten down the Sensor Mount Bolts.
8. You may use the Birdview ADC Cable for this installation. The two colored wires connect to the Reed Switch, the shield wire may be connected to ground, refer to the instructions packaged with your motor drive controller.
9. After testing for proper operation, install the cover over the Motor Drive Unit.

In Case Of Difficulty

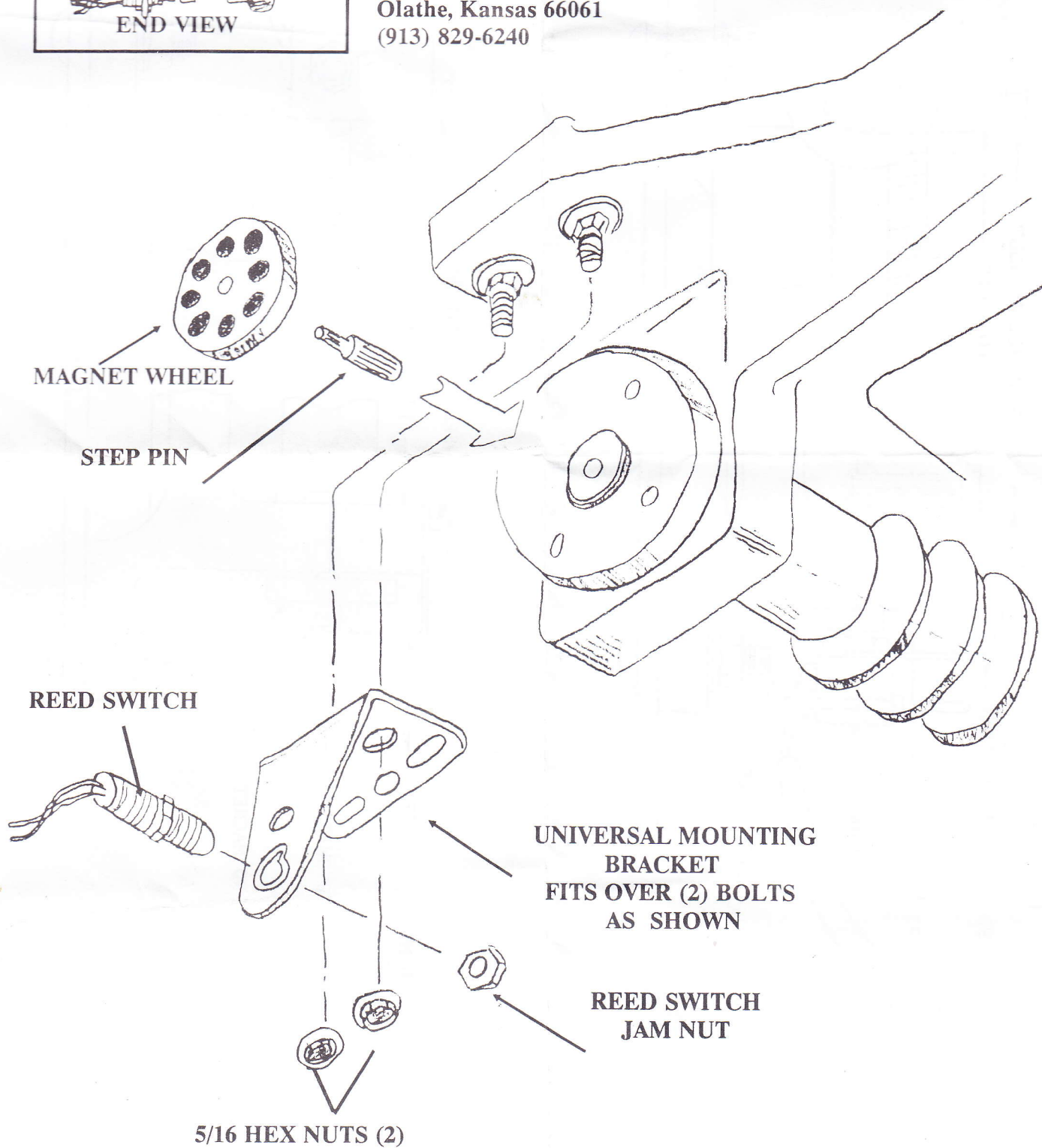
1. Check that the reed sensor is as close to the magnet wheel as possible, without touching.
2. Check that the magnet wheel runs true, without wobble.
3. Should the reed sensor still not function consistently, the reed switch inside of the sensor may be aligned parallel to the magnet flux lines as shown below (WRONG). Loosen a jam nut and rotate the sensor 90 degrees. This can greatly increase magnetic attraction.



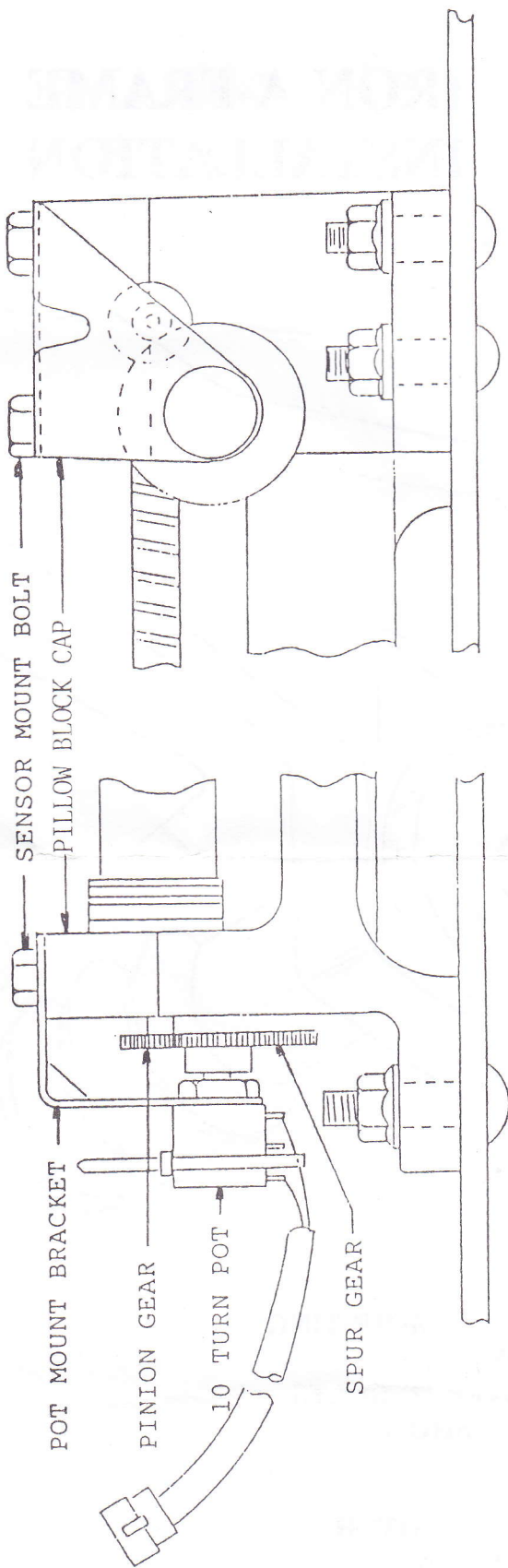


Birdview Satellite Service
1407 E. Spruce
Olathe, Kansas 66061
(913) 829-6240

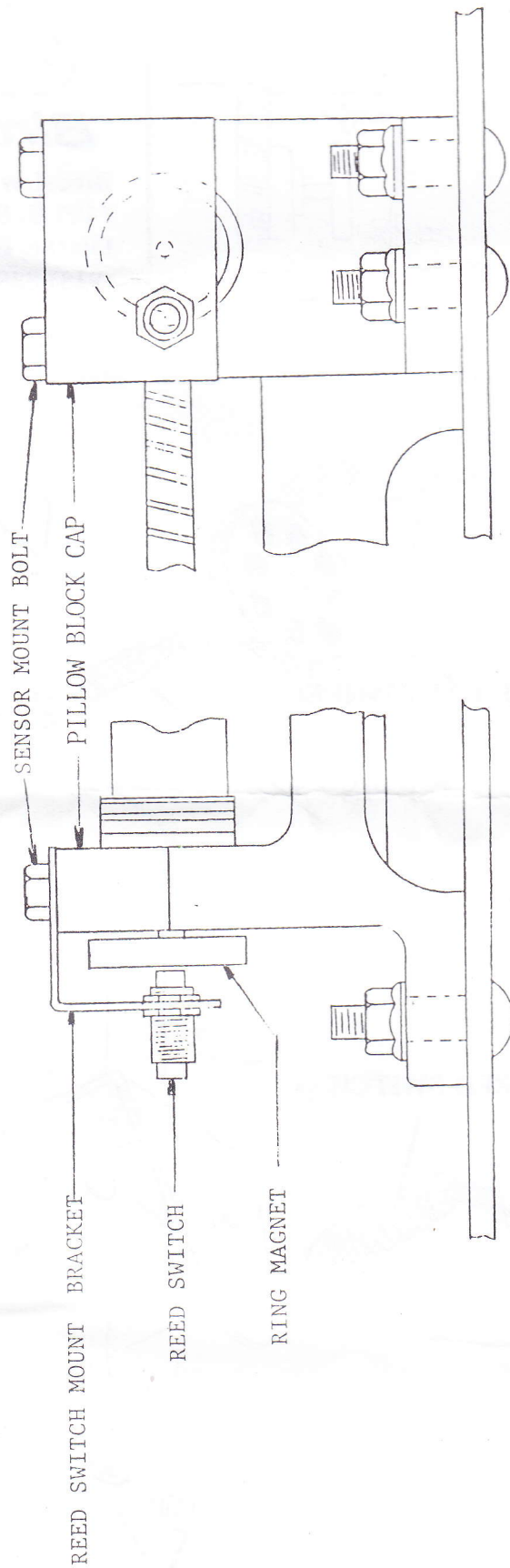
IRON A-FRAME INSTALLATION



10 TURN POTENTIOMETER

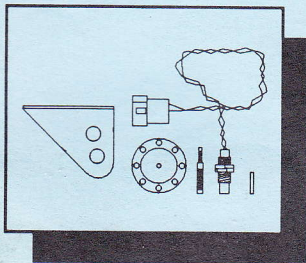


REED SWITCH SENSOR





REED SWITCH CONVERSION KIT



- Simplebolt on conversion.
- Compatible with all current IRD receivers.
- Precise, accurate positioning.
- 4 count version available for HTS/Echo IRDs.

Birdview Satellite Service
1407 East Spruce
Olathe, Kansas 66061
(913) 829-6240