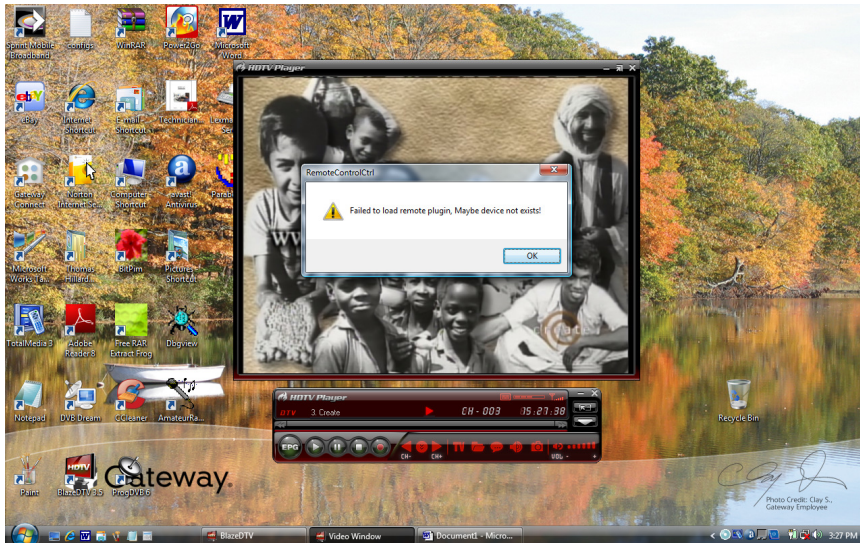


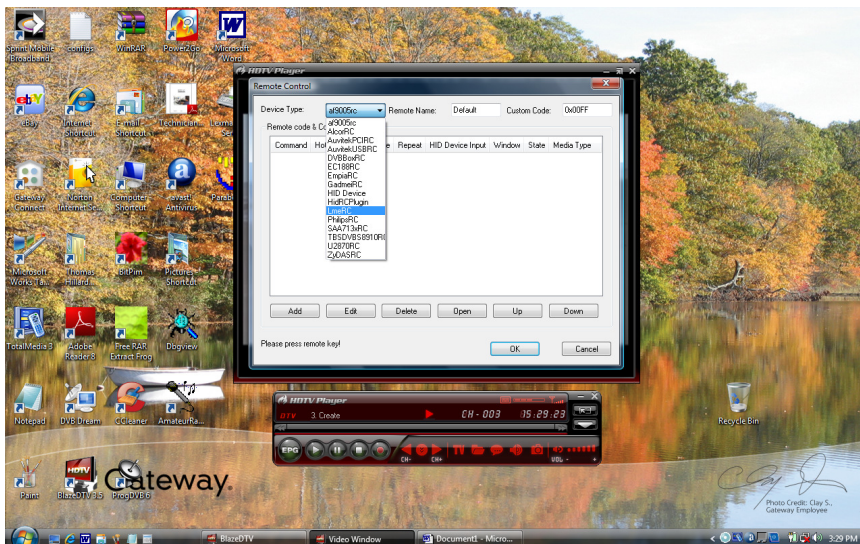
## Blaze DTV 3.5 Changing IR Remote

22-01-2010

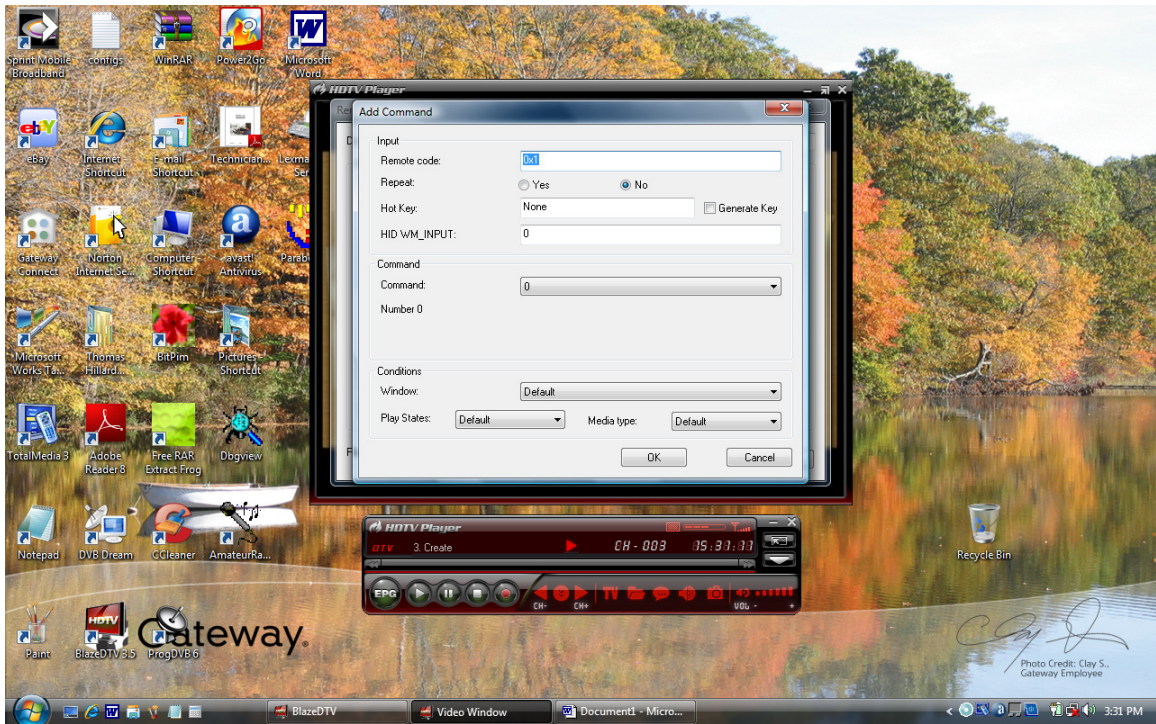
Thomas Hillard - Author



Press Shift+Ctrl+Alt+R at the same time to get into this screen. Click OK.

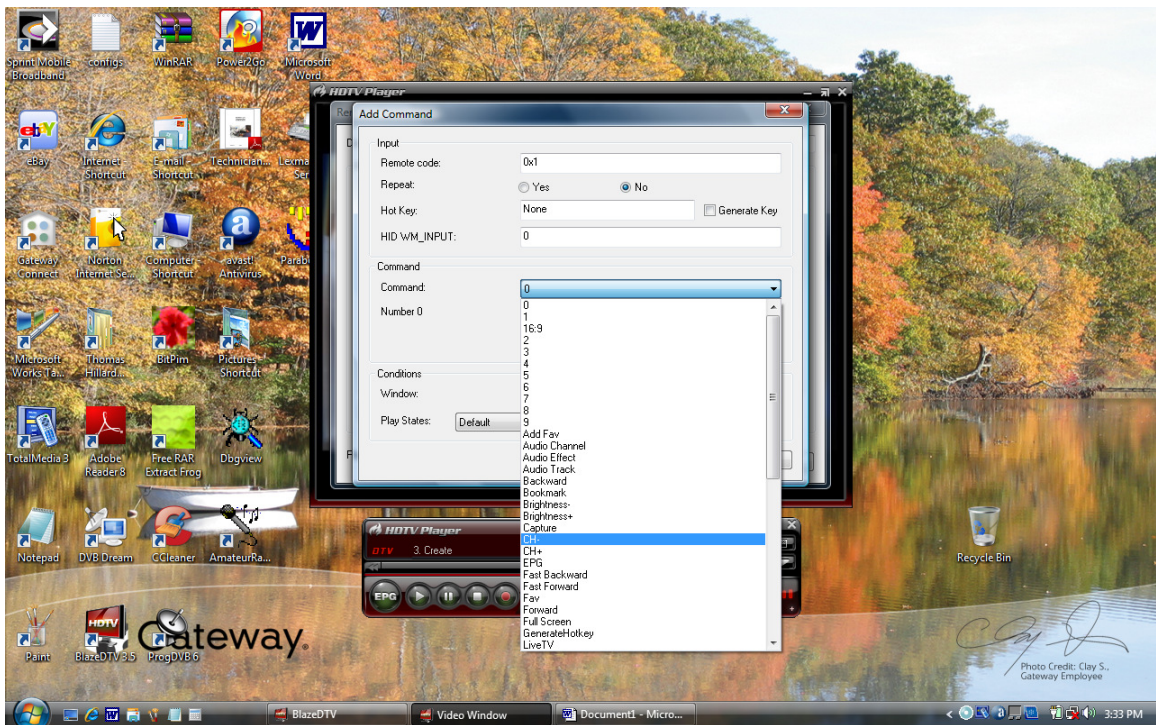


Select LmeRC file.



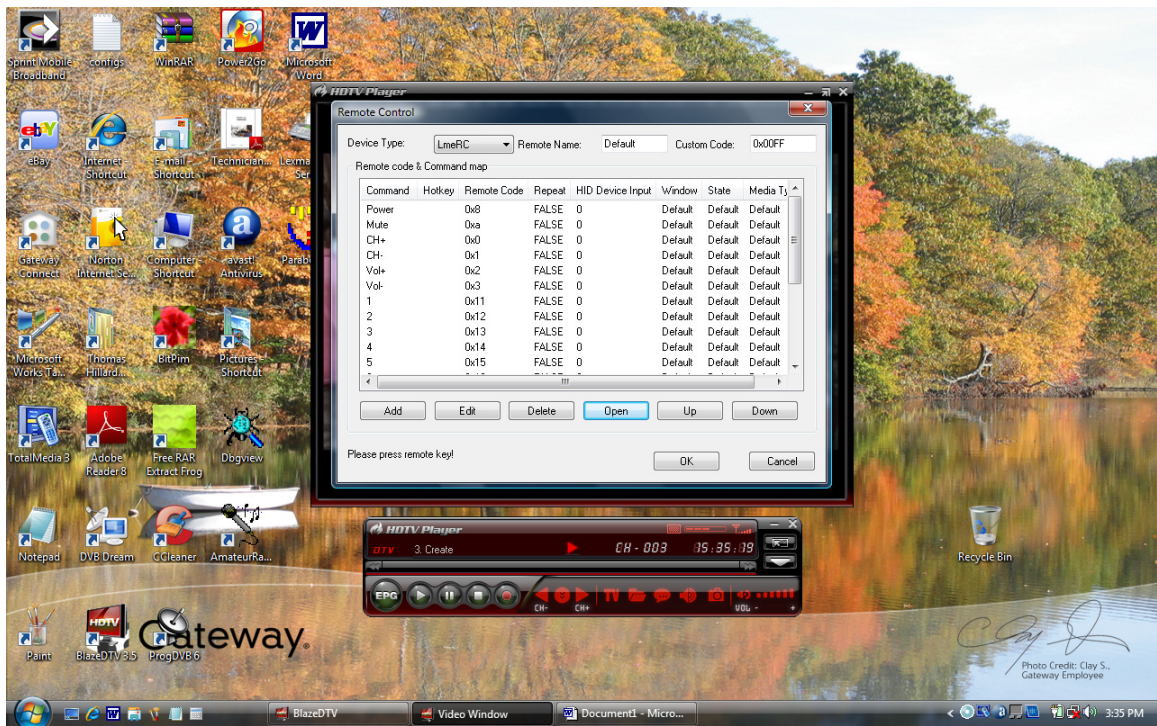
With a Universal IR Remote select TV and program in NEC Code 006.

Press a key that you want to map in. Then click on Command menu.



Select the function to map.





When finished you save the file to the Default.ini file when you click OK. Reboot Blaze DTV and the remote will work.