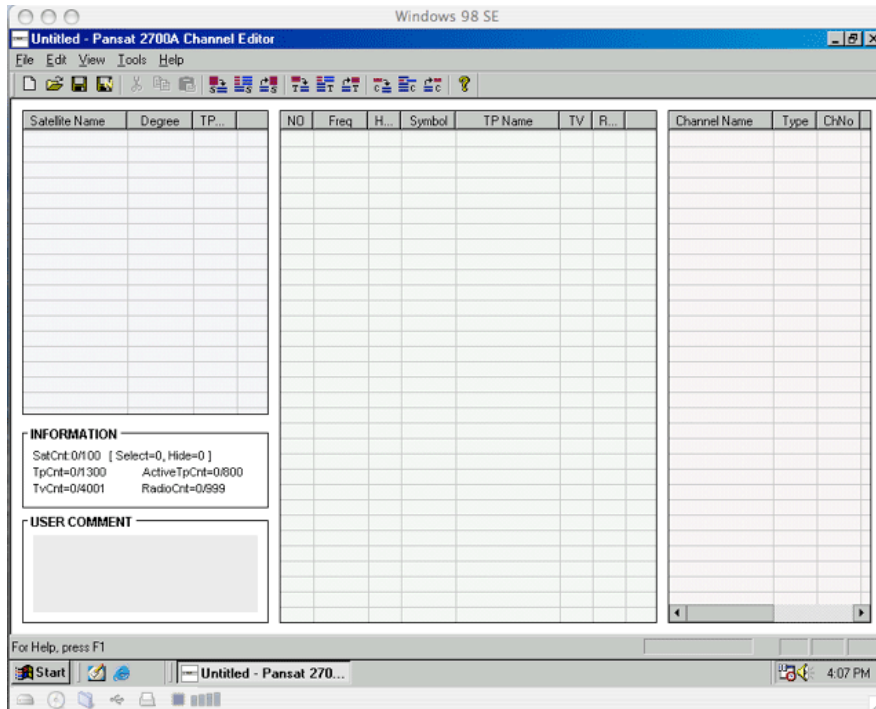


How to read and write your channel list for the Pansat 2700A.

Pansat's web site is: <http://www.pansatusa.com/>

1. Grab the cable that came with the Pansat 2700A and connect one end to the data port on the rear of the 2700A and the other end into COM1 of your computer.
2. Go to Pansat's web site and download the latest and greatest for the 2700A.
3. Unzip and install the channel editor (Ch Editor187 (Pansat 2700A)).
4. If all that goes well, then you can run the program and you will see the screen below:



5. Click on "Tools", then choose "Connect To Receiver", then hit "Upload". The program will start reading the 2700A's list. If it doesn't start reading, check your cable and try again.
6. After the list loads into the program, edit your channels, save the file, and now you're ready to write the edited list back to the receiver. Click on "Tools" again, then "Connect To Receiver", then "Download". After the 2700A reboots, you'll have your new list.