

Setting Up Your Replacement Remote



21.1 IR/UHF Remote Control
222, 222k, 622, 722 and 722k Receivers

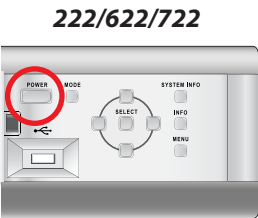
1. Install the Batteries

Remove the remote battery cover and install the enclosed batteries. Replace the battery cover and attach the correct identification labels.



2. Test Your Remote

To turn your DISH receiver on, press and release the POWER button on the front of your receiver. Then, turn on your TV and press and release the GUIDE button on your DISH remote.



If the programming guide displays on your TV, skip to Step 6.

If the programming guide does not display, continue with Step 3.

3. Determine the Correct Side for the Remote Key

There is a removable, two-sided key at the bottom of your remote. Your remote was shipped with the TV2 side up.

TV2 Side Up:

TV2 is the TV located in a **different** room than your receiver. If your remote will be used to operate TV2, skip to Step 5.

TV2 Side



TV1 Side Up:

TV1 is the TV located in the **same** room as your receiver. If your remote will be used to operate TV1, continue with Step 4.

TV1 Side

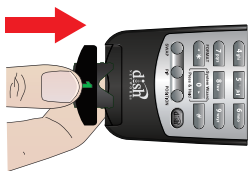


4. Flip the Remote Key (to Operate TV1)

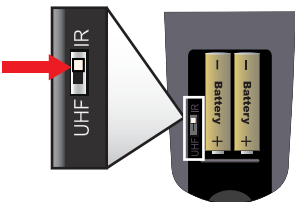
A Remove the battery cover and use your thumbnail to remove the key from the remote.



B Flip the key and re-insert it into the remote so that the green TV1 side of the key is facing up.

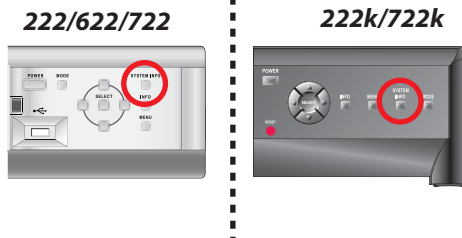


C Use the tip of a pen to slide the switch located in the remote battery compartment to the IR position. Replace the battery cover.

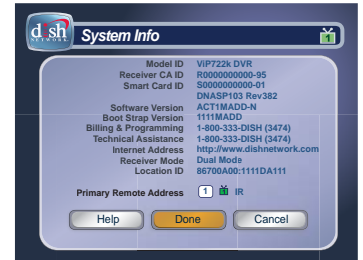


5. Program the Remote to Control Your Receiver

- A** Press and release the **SYSTEM INFO** button on the front of your receiver.



The System Info screen will display.



- B** Press and release the **SAT** mode button on your remote.



The SAT mode button will light up.



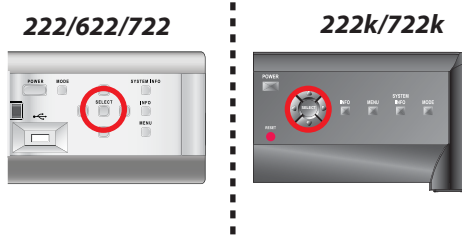
- C** Press and release the **RECORD** button.



The SAT mode button will light up again.



- D** Press and release the **SELECT** button on the front of your receiver to close the System Info screen.



The System Info screen will close and programming will display.



- E** Go to the TV where the remote will be used. Press and release the **GUIDE** button on your remote.



The programming guide will display on the TV.



6. Program the Remote to Control Your TV

Use the “Remote Control TV Codes” booklet that was included with your replacement remote to find the code needed for your TV.

- A While facing the TV where the remote will be used, press and hold the TV mode button.



All four mode buttons will light up.



- B Enter the three-digit remote control code from the “Remote Control TV Codes” booklet.



The TV mode button will light up.



- C Press and release the POUND (#) button.



The TV mode button will flash three times.



- D Press and release the large, red POWER button.



The TV will turn off.



- E Press and release the SAT mode button.



The SAT mode button will light up.



- F Press and release the TV POWER button. Then, press VOLUME up or down to confirm that the remote operates your TV.



The TV will turn on and respond to remote commands.*



Congratulations! You are now ready to enjoy DISH Network.

*If your TV does not respond to the DISH remote, try another three-digit remote control code. Go to dish.com/support for instructions on programming your remote using Power Scan or for setting up your remote to function in Limited and SAT Auto Tune modes.