

# Remote Control User Guide



**dish**  
NETWORK®

**dish**  
NETWORK®

# Reference Tables

Write down your remote address, channel numbers/inputs, TV, VCR, DVD player, and stereo equipment codes as you program them for future reference.



Remote Address

--	--

Channel or Input for  
Satellite Programming



--

If you enter a "1" as the last number of your code, your remote is in Limited Mode (see page 3 for more details).

TV

TV Code

			1
--	--	--	---

(Optional)

DVD

VCR/DVD Player Code

			1
--	--	--	---

(Optional)

AUX

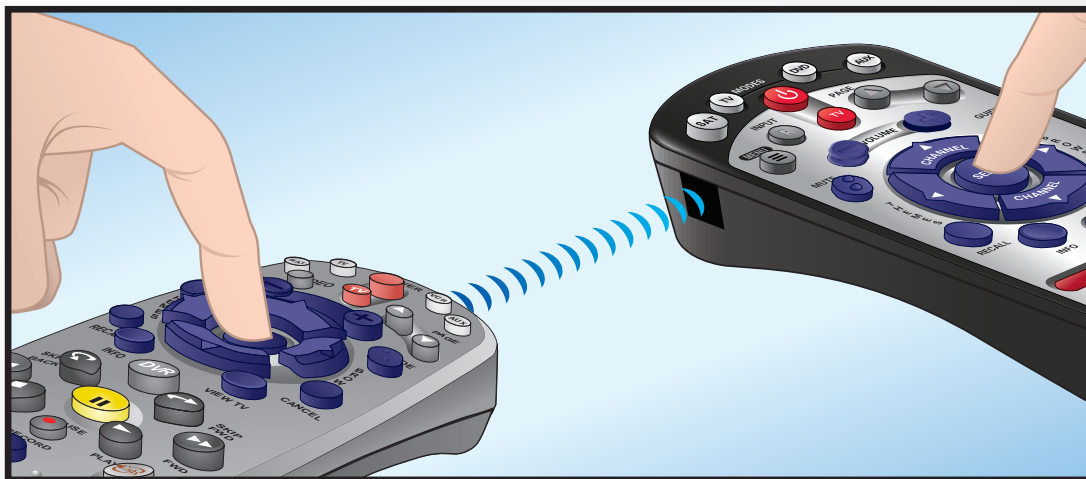
Auxiliary Equipment Code

				1
--	--	--	--	---

(Optional)

To read out your remote codes, see page 8 for instructions.

Refer to page 9 for detailed instructions on Learning



Refer to page 11 for detailed instructions on System Wizard

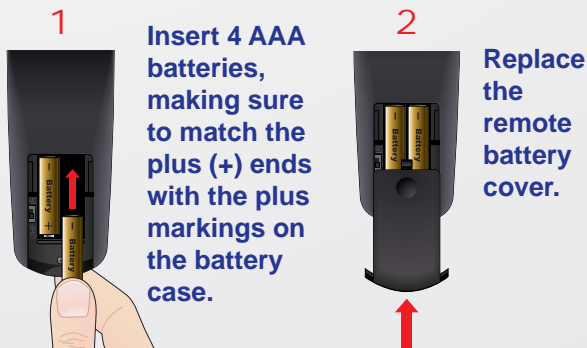


# 1 Install the Key Correctly

**Note:** If you will be using the blue TV2 key that comes already installed in your remote, skip this step and proceed with the next step (*Insert the Batteries*).



# 2 Insert the Batteries





3

## Making the Remote Work With Your Receiver

1

If you installed this key, continue with **step 2** on this page.

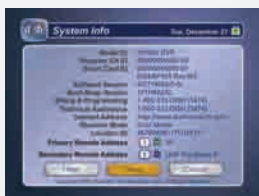


2

Verify the UHF antenna is installed on the back of the receiver. Verify the UHF/IR Switch is set to UHF.



4



Confirm that you see the System Information screen.

If you installed this key, go to **page 14** inside this guide.



3

SYSTEM INFO

Turn your receiver and TV on, and press **SYSTEM INFO** on the front of the receiver.



RECORD

5



Press **RECORD** on your remote. The remote address will probably change on the screen.

6

Confirm that your remote operates your receiver by pressing remote buttons. If your remote has a blue number 2 key, you may need to go to your remote TV2 location to confirm your remote operates your receiver. If this is not working, go back to **step 5**.



# Program the Remote to Control Your TV

To program the remote control to operate a TV, you can enter an Equipment Code (see instructions on page 3).

Or, follow the steps below to scan the database of all Equipment Codes.

Or teach your remote the commands for your TV (see instructions on page 9).

1



Turn your TV on.

2



Press & hold the TV Mode button until all Mode buttons light up.

3



Press **POWER**.

4



Press the **UP ARROW** on the remote repeatedly (1 press per second) until your TV turns off.

5



Press **POUND**.  
The TV Mode button will flash three times.

6

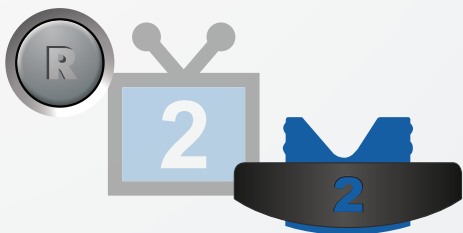


Press the **POWER** button to turn the TV on and try other buttons to make sure the code works. If you want to try another code, start over from **step 1**.

# Programming the Recover Button for TV2 Operation

For TV2 Remote Controls on  
DISH Player-DVR 522, 625, 942  
and ViP222, ViP222k, ViP622 DVR,  
ViP722 DVR, ViP722k DVR Receivers

Programming your RECOVER button allows you to easily regain satellite programming if you accidentally change TV channels or inputs.



1



Press & hold the  
TV Mode button  
until all Mode  
buttons light up.

2



Press  
STAR.

3



Enter the channel  
number you tune  
your TV to when  
you watch satellite  
programming.

4



Press  
POUND.

Use the RECOVER button as described in  
*If You Lose Your Picture* on the next page (C-6).

## Placing Your Remote in Limited Mode

Limited Mode locks out all the TV mode operations except for TV power, Mute, and Volume. This prevents you from accidentally tuning away from satellite programming.

1



**Press & hold the TV Mode button until all Mode buttons light up.**

2



**Press the PAGE UP button.**

3



**Press POUND.**

To take the remote out of Limited Mode, use the PAGE DOWN button instead of the PAGE UP button in step 2.

## If You Lose Your Picture (How to Use the RECOVER Button)

Use the RECOVER button to get back to watching satellite programming if you accidentally change channels or inputs on your TV.

1



**Press and hold RECOVER until all mode buttons light up.**

2



**If you see the System Information screen, proceed to step 4. Otherwise, continue to step 3.**

(Your screen may be different)

3



**Press RECOVER again & wait until the mode lights stop flashing. If you see the System Information screen, go to step 4. If not, repeat this step until you do.**

4



**Press SELECT to resume watching TV.**

# Remote Operation

## SAT Mode

To use the features described in this section, make sure you are in SAT mode by pressing the SAT Mode button.

**Note:** Some features may not be available depending on your receiver model.

### Volume & Mute Buttons

Control TV volume

Programming required (see C-4)

Press this button for SAT Mode

### Receiver Power & TV Power

**Top button** turns the receiver on/off,  
**Bottom button** turns the TV on/off  
Programming required (see C-4)

### Page Buttons

Page up/down in menus

### Program Guide

Display current and future satellite program listings

### Browse

See what is on other channels while watching TV

### Arrows/Select Buttons

Channel up/down, navigate through menus and select a desired option

### View Satellite Programming

Exit out of any menu/guide and go back to viewing live TV

### Number Buttons

Enter a channel number, or navigate through menus

### System Wizard

Press and hold to fix remote control issues and sync data

### DishHOME

Explore interactive TV features

### Input

Press once for Input, Press and hold for Recover

### Receiver Menu

Access receiver features and settings

### Themes

Search for programs using Themes

### Recall

Go back to last channel viewed

### Info

Get info on programs

### Search

Search for a program

### Shortcut Keys

(for future use)

### Digital Video Recorder (DVR) Buttons

Pause live TV and play or record programming

### Format

Format the picture to the desired width to match the program you are viewing

### Picture-In-Picture (PIP) Buttons

Watch two separate programs at once (in Single Mode)



# Remote Operation

## TV Mode

To use the features described in this section, make sure you are in TV mode by pressing the TV Mode button. 

Remote programming is required. See C-4 for instructions.

Note: If you have programmed the remote in Limited Mode (C-6), only the TV Power, Mute and Volume buttons will control your TV.



**Note:** Remote operation is different on DISH Network TVs. See your DISH Network TV User's Guide for proper operation.

# Remote Operation

## DVD Mode

To use the features described in this section, make sure you are in DVD mode by pressing the DVD Mode button. You can use this mode to operate your VCR instead of a DVD player. Remote programming is required. See page 2 for instructions.

DVD

Press this button for DVD Mode

### DVD/VCR Power & TV Power

**Top button** turns the DVD player/VCR power on and off, **Bottom button** turns the TV on and off

### Input

Switch VCR between its TV & VCR mode

### Up/Down Arrow Buttons

Channel up/down on VCR

### Pause

Pause a videotape or DVD

### FWD

Forward a videotape or DVD

### Play

Play a videotape or DVD

### Back

Rewind a videotape or reverse a DVD

### Stop

Stop playing a DVD, stop playing or recording a videotape

### Record

Record on a videotape

**Number Buttons**  
Enter a channel number for DVD



# Table of Contents

## Quick Setup

Learning, System Wizard.....	C-1
Install the Key Correctly, UHF/IR Switch.....	C-2
Inserting the Batteries.....	C-2
Making the Remote Work with Your Receiver .....	C-3
Programming the Remote to Control Your TV .....	C-4
Programming the Recover Button for TV2 Operation.....	C-5
Placing Your Remote in Limited Mode.....	C-6

## Operation

If You Lose Your Picture .....	C-6
SAT Mode .....	C-7
TV Mode .....	C-8
DVD Mode .....	C-9
Remote Control Overview.....	1
Using the Guide .....	1
Remote Control Modes.....	1
How the Remote Communicates .....	2
Programming for Other Equipment.....	2
Combination Equipment (for example, TV/DVD) .....	2
Limited Mode .....	3
Programming Using Equipment Code Tables.....	3
Scanning for Equipment Codes .....	5
Switching Between TV and Amplifier Volume Control .....	6
Programming the Remote to Control a Second Receiver in AUX Mode .....	7
Reading Out Codes .....	8
Learning From Another Device's Remote.....	9
Using the System Wizard .....	11
Discrete Codes for Learning Remotes.....	13
Avoiding Remote Conflicts.....	13
Changing the Remote and Receiver Address .....	13
Changing Between UHF and IR Using the UHF/IR Switch.....	14
Equipment Codes .....	17
Troubleshooting .....	31
Limited Warranty.....	33
Your Remote Control Codes .....	Inside Back Cover



## REMOTE CONTROL OVERVIEW

Use this full-function remote control to operate the ViP®722k DVR and ViP222k DISH Network receivers. Also, you can program the remote control to operate most of the popular brands of audio/video equipment like a TV, a DVD player (or VCR), or a second DISH Network satellite receiver. See *Programming for Other Equipment* on page 2.

**Note:** This remote control may have features not used by your receiver.

## USING THE GUIDE

This guide makes it easy to set up and use your remote control. By now you've noticed that the cover contains information on quick set up and remote control operation.

The rest of the guide contains in-depth information to help you get the most from your remote control, including controlling other equipment like TVs, VCRs, and DVD players.

## REMOTE CONTROL MODES

Use the remote control's mode buttons to set the remote to the correct mode for the equipment. Be sure to program the remote control to operate the other equipment as described on page 2.



SAT Mode



TV Mode



DVD Mode



AUX Mode

**Great Idea:** Whenever you finish using other equipment (TV, DVD, VCR, etc.) be sure to put the remote back in SAT mode.

To change the mode, press the button for the equipment you want to control. The mode button lights for three seconds to show you've set the remote to that mode.

If you program the remote control to operate other equipment, refer to the following for remote-control operation instructions:

- TVs, page C-8.
- DVD players and VCRs, page C-9.
- Other DISH Network satellite receivers, page C-7.
- Stereo equipment (for example, an audio amplifier programmed in AUX mode) uses only these buttons: **SELECT** (to change inputs), **MUTE**, **VOLUME**, and **POWER**.

## HOW THE REMOTE COMMUNICATES

Depending on how the remote is set up, the remote control may use UHF radio signals, IR signals, or both to control the receiver. However, only IR signals are used to control other equipment.

- IR signals travel short distances (up to 40 feet), and cannot go through walls or other solid objects. Point the remote control directly at the equipment you want to control, with no objects to block the signal path.
- UHF signals travel long distances and can go through walls and other solid objects. Because these signals travel so far, the receiver may respond to signals from other nearby remote controls. To handle this problem, you may want to change the remote and receiver addresses (see page 13).
- If you're set up to use UHF, make sure that the UHF remote antenna is attached to the receiver's back panel **REMOTE ANTENNA** input so it can receive the UHF remote signals.

## PROGRAMMING FOR OTHER EQUIPMENT

Page C-4 shows you how to program the remote control to operate a TV. The following section uses a different method to program the remote control to operate a TV or other equipment (such as a DVD player or VCR, tuner, amplifier, audio receiver or a second TV). You can program the remote control by either following the instructions in *Programming Using Equipment Code Tables* on page 3, or the *Scanning for Equipment Codes* procedure described on page 5.

### COMBINATION EQUIPMENT (FOR EXAMPLE, TV/DVD)

When programming the remote control to operate combination equipment, such as a TV/DVD or a TV/VCR, program the remote control in one mode, and then repeat the procedure in the other mode. For example, to program the remote control to operate a TV/DVD

player using code 765, follow the instructions to program the remote to operate the TV using code 765, and then repeat the instructions for the DVD using the same code. Put the remote in TV mode to use TV functions, or DVD mode to use the DVD player (or VCR) functions.

## LIMITED MODE

You can program your remote control in Limited Mode to keep from accidentally changing the channel on your TV or VCR. When you use the remote control to operate your TV in Limited Mode, you will only be able to use the **POWER**, **MUTE**, and **VOLUME** buttons to operate your TV. Also, when you use the remote control to operate your VCR in Limited Mode, you will only be able to use the **POWER** and **VCR** function buttons. The section *Programming Using the Equipment Code Tables* has a step that tells the remote control to go into Limited Mode. Also, a quick way to put the remote in Limited Mode is described on page C-6.

**Note:** Limited Mode cannot be used with audio amplifiers.

## PROGRAMMING USING EQUIPMENT CODE TABLES

You can set up the remote control to operate other equipment using the code-table listings that start on page 17 and the modes as shown on page 1. To control a receiver in AUX mode, see page 7.

Instructions	Additional Information
<b>1</b> Turn the equipment on.	Use the equipment's front panel buttons or its own remote control.
<b>2</b> Find the brand name of the equipment listed in the code tables that start on page 17.	If the brand isn't listed in the tables, see <i>Scanning for Equipment Codes</i> on page 5.
<b>3</b> Press and hold the mode button for the equipment until all the other mode buttons light up, and then release the button. The mode button flashes.	For example, hold the TV mode button for a TV until all of the other mode buttons light. When you let go, the TV mode button will be flashing.

Instructions	Additional Information
<b>4</b> <i>For AUX mode only.</i> Press 0 for a second TV, or 1 for a second DVD/VCR, or 2 for a tuner, amplifier, or audio receiver.	This step is for programming the kind of equipment that should be programmed in AUX mode. If you're not programming in AUX mode, skip to step 5.
<b>5</b> Enter one of the three-digit equipment codes from the table using buttons on the number pad.	The three-digit equipment code should be for the brand name of your equipment that you found in step 2.
<b>6</b> If you want to program Limited Mode, press 1. If not, skip to step 7.	See <i>Limited Mode</i> on page 3 for more information.
<b>7</b> Press POUND (#).	If you entered the code correctly, the mode button flashes three times.
<b>8</b> Press POWER to turn off the equipment. If the equipment does not turn off, go to step 10.	If the code you entered works, the equipment should turn off.
<b>9</b> Turn the equipment back on and try some other buttons to make sure they work. If the code works for other buttons, stop here.	For example, sometimes POWER works when other buttons don't. Note that more than one code may work to turn equipment on or off.
<b>10</b> If the code doesn't work, repeat steps 3 through 9 with another equipment code listed in the tables.	Try every code listed for your brand until one works for your equipment.
<b>11</b> If you can't find a code that works, try the instructions that follow for <i>Scanning for Equipment Codes</i> .	

## SCANNING FOR EQUIPMENT CODES

Instructions	Additional Information
<b>1</b> Turn the equipment on.	Use the equipment's front panel buttons or its own remote control.
<b>2</b> Press and hold the mode button until all the other mode buttons light up, and then release the button. The mode button flashes.	For example, hold the TV mode button for a TV until all of the other mode buttons light. When you let go, TV will flash.
<b>3</b> <i>For AUX mode only.</i> Press 0 for a second TV, 1 for a second DVD/VCR, or 2 for a tuner, amplifier, or audio receiver. Then press the STAR (*) button.	This step is for programming the kind of equipment that should be programmed in AUX mode. If you're not programming in AUX mode, skip to step 4.
<b>4</b> Press POWER.	This puts your remote control in its code scanning mode.
<b>5</b> Press either the UP or DOWN ARROW repeatedly until the equipment turns off.	As you press the UP or DOWN ARROW, the remote tries each code in the memory to see if it can turn off your equipment. When the equipment turns off, you have found a code that might work. <b>Note:</b> The mode button for the equipment will flash rapidly eight times when you've scanned through all the codes for that equipment.
<b>6</b> Press POUND (#).	The mode button flashes three times if you have entered the code correctly. This stores the code that you found.

Instructions	Additional Information
<b>7</b> Turn the equipment back on and try some other buttons to make sure they work.	Press <b>POWER</b> to turn the equipment back on. Try some other buttons to make sure they work. Sometimes <b>POWER</b> works when other buttons don't, and more than one code may work to turn equipment on or off.
<b>8</b> If necessary, repeat this procedure until you've tried all the codes.	You may need to repeat the scan to find the best code for your equipment.

## SWITCHING BETWEEN TV AND AMPLIFIER VOLUME CONTROL

When the remote control is set up to operate your TV, the **MUTE** and **VOLUME** buttons will adjust your TV volume. To use the remote to adjust the volume of a remote-controllable audio receiver or amplifier instead of adjusting the TV's volume setting, use the steps in the left column of the table. To switch back to controlling the TV's volume, use the steps in the right column of the table.

Control Amplifier Volume	Control TV Volume
<b>1</b> Press and hold the <b>AUX</b> mode button until all mode buttons are lit, then release it. The <b>AUX</b> mode button will blink.	<b>1</b> Press and hold the <b>TV</b> mode button until all mode buttons are lit, then release it. The <b>TV</b> mode button will blink.
<b>2</b> Press the <b>POUND (#)</b> button.	<b>2</b> Press the <b>POUND (#)</b> button.
<b>3</b> Press the plus (+) side of the <b>VOLUME</b> button.	<b>3</b> Press the plus (+) side of the <b>VOLUME</b> button.
<b>4</b> Press the <b>0</b> number button.	<b>4</b> Press the <b>0</b> number button.
<b>5</b> Press the <b>POUND (#)</b> button. The <b>AUX</b> mode button flashes three times.	<b>5</b> Press the <b>POUND (#)</b> button. The <b>TV</b> mode button flashes three times.

## Control Amplifier Volume

### **MAKE SURE THE REMOTE CONTROLS THE AMPLIFIER'S VOLUME IN OTHER MODES:**

- 6** Press the SAT mode button.
- 7** Press the plus (+) and minus (-) sides of the VOLUME button.
- 8** Your tuner/amplifier's volume changes and the AUX mode button lights instead of the TV mode button.

## Control TV Volume

### **MAKE SURE THE REMOTE CONTROLS THE TV'S VOLUME IN OTHER MODES:**

- 6** Press the SAT mode button.
- 7** Press the plus (+) and minus (-) sides of the VOLUME button.
- 8** Your TV's volume changes and the TV mode button lights instead of the AUX mode button.

## ***PROGRAMMING THE REMOTE TO CONTROL A SECOND RECEIVER IN AUX MODE***

If you have another DISH Network receiver installed, you can use this remote control in AUX mode to operate it along with your new receiver. When you program the remote control to operate the other receiver, the remote will send IR signals to that receiver, so the line of sight to the second receiver must be unobstructed. You can program the remote control to operate any other DISH Network receiver, *except* for:

- TV2 on DISH 322, DISH Player-DVR models 522, 625, and 942, ViP222, ViP222k, ViP622 DVR, ViP722 DVR or ViP722k DVR
- DishPlayer 7100/7200

- 1** Turn on the other receiver and open the System Information screen. (For help opening the System Information screen, refer to the user guide for the other receiver.)

Write down the TV2 address shown: \_\_\_\_\_

- 2** Press and hold the AUX button until all the mode buttons light up, and then release the button. The AUX button flashes.
- 3** Use the NUMBER PAD on the remote control to enter a 3, followed by the address you wrote down in step 1.
- 4** Press POUND (#). The AUX button blinks three times.
- 5** Press RECORD to verify that the address in the remote control now matches the address for the receiver.

# READING OUT CODES

These instructions explain how to check the remote control code you put in the remote control when you set it up. Be sure to write them in the spaces provided on the inside back cover.

Instructions	Additional Information
<p>1 Press and hold the mode button for the equipment you want the remote control to operate. When all the mode buttons light up, release the button—the selected mode button should now be flashing.</p>	<p>For example, hold the TV mode button for a TV until all of the other mode buttons light. When you let go, the TV mode light will flash.</p>
<p>2 Press the POUND (#) button <i>twice</i>. The mode button flashes the number for each digit of the equipment code, with a pause between the groups of flashes. A quick flash is for zero.</p> <p>For AUX mode, the first group of flashes tells you what the AUX mode controls, then the following flashes tell you each digit of the equipment code. A quick flash (zero) before the three-digit code is for a TV; one regular flash is for a DVD player or VCR; and two flashes is for a tuner, amplifier, or audio receiver.</p> <p>For another satellite receiver programmed in AUX mode, the group of flashes tells you the second receiver's address number.</p>	<p>For example, if the code is 570, the mode button flashes five times, pauses, flashes seven times, pauses, and flashes once quickly.</p> <p>For example, if the TV code is 570, the AUX mode button flashes once quickly (indicating the AUX equipment is a TV), pauses, flashes five times for the first digit of the code, then pauses, flashes seven times for the second digit of the code, pauses again, and flashes once quickly for the final digit (zero) in the code.</p> <p>For example, if the AUX mode button is set to control a satellite receiver with address 5, the AUX mode button flashes five times.</p>



## LEARNING FROM ANOTHER DEVICE'S REMOTE

After you have programmed your DISH Network remote to control your equipment (in TV, DVD or AUX modes), you may find not all of the commands used by the equipment's original remote controls function as you expect. The learning function of your DISH Network remote control can support these commands.

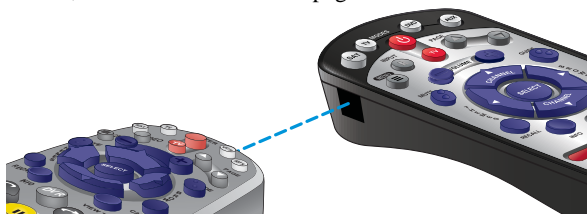
The remote control can learn commands in two ways:

- 1 You can follow the instructions for using equipment codes to program a specific mode, and then learn commands that add new or overwrite existing functions of the remote control's buttons in this mode. For this type of learning, any button without a learned command keeps the previous command (if any) for that equipment code.
- 2 Each button on this remote learns a command from the equipment's original remote control. For this type of learning, any button without a learned command will have no function for that equipment.

To "teach" your DISH Network remote control specific commands for your equipment, complete the following:

- 1 Ensure the DISH Network remote control is programmed to the desired remote address (see *Changing the Remote and Receiver Address* on page 13).
- 2 Place both your DISH Network remote and the original equipment's remote control on a flat, stable surface.
- 3 On the DISH Network remote, press and hold the mode button for your equipment for about three seconds until all the mode buttons light up, and then release it. Your selected mode button will blink.
- 4 To start learning commands for this mode:
  - If you've found a code for that equipment, first program the code using the instructions for *Programming Using Equipment Code Tables* on page 3 or *Scanning for Equipment Codes* on page 5. Press and release RECALL, then hold the RECORD button for about three seconds until the mode button is lit again. The button remains lit while learning.
  - If you have not programmed a code for that equipment, press and hold the RECORD button for about three seconds until the mode button is lit. The button remains lit while learning.

- 5 Point the front of the original equipment's remote to face the small square (IR window) on the front, left-hand side of DISH's remote, as shown below and on page C-1.



- 6 On the DISH Network remote, press the button you want to teach.
- 7 On the original equipment's remote control, press and hold the button you want learned. If the DISH Network remote learns the command, the mode light blinks off and then back on. If the mode light blinks three times or remains lit, the DISH Network remote did not learn the command. You may need to press the button on the original remote several times for the DISH Network remote to learn the command.
- 8 After a button has learned a command successfully, repeat step 6 and step 7 until all commands you want have been learned.
- 9 To end the learning sequence:
- Press one of the mode buttons on the DISH Network remote. This saves all the commands for that mode, and exits learning to return to normal remote control operation.
  - If the remote runs out of memory for learned commands, it saves the commands you have learned for equipment in this mode, exits learning and returns to normal remote control operation. The DISH Network remote cannot learn additional commands.



- If the remote control batteries are too low for learning, all the mode buttons blink quickly eight times. Learning ends **without saving learned commands**, and the remote returns to normal operation. Change the batteries.

- To cancel learning, do not press any buttons on either remote control for at least 30 seconds. The DISH Network remote control times out and returns to normal operation.

Note that **no learned commands are saved** if the DISH Network remote control times out before completion.

## USING THE SYSTEM WIZARD

By pressing and holding the 0 (zero) key on the DISH Network remote control for TV1 (or for TV2, if you have set it to **IR only**, as on page 14), you enter the System Wizard, viewable on TV1 (see page C-1).

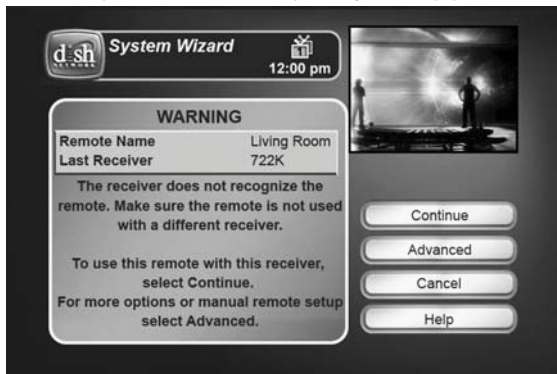


The System Wizard can help you diagnose certain problems you may be having with your DISH Network remote control, including:

- *Remote Is Not Recognized*
- *Adjust Remote Configuration*
- *Resolve Address Conflict.*

### REMOTE IS NOT RECOGNIZED

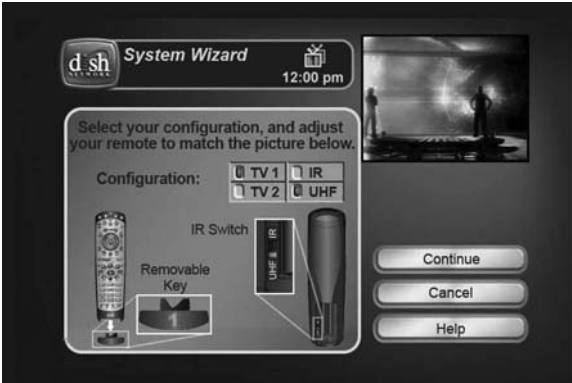
The remote may not be immediately recognized by your receiver.



If you select Continue, the wizard tries to configure your receiver and remote control to work together.

## ADJUST REMOTE CONFIGURATION

You may see a screen asking you to adjust the physical configuration of the remote control.



Configure the remote key (see page C-2) and the UHF/IR switch (see page 14) as shown on the screen, and then select Continue.

## RESOLVE ADDRESS CONFLICT

You may also see a screen noting that your remote control is not set to the same address as your receiver.



Select Continue on this screen and the wizard will attempt to resolve the address conflict between the remote control and the receiver.

## DISCRETE CODES FOR LEARNING REMOTES

Discrete On and Off IR-only remote-control commands are used by installers when programming macro commands into universal remotes. Using an On-only or Off-only command is more effective than a toggle On/Off command when trying to ensure the satellite receiver is reliably in one state or the other. To use discrete power commands, ensure you have set the UHF/IR switch in the remote to **IR only**, as on page 14) and complete the following:

- 1 Program the DISH Network remote to the desired remote address (see *Changing the Remote and Receiver Address* below).
- 2 Hold the SAT mode button until all mode buttons light, then release the button.
- 3 Press the POWER button (not TV POWER).
- 4 Press VOLUME UP for discrete power on, or VOLUME DOWN for discrete power off.
- 5 Press any other button when you are done to end this procedure.

## AVOIDING REMOTE CONFLICTS

When your remote control sends UHF signals, you may experience interference from other nearby remote controls. The instructions in this section describe how to avoid such remote-control conflicts.

### CHANGING THE REMOTE AND RECEIVER ADDRESS

One quick way to avoid remote-control conflicts is by changing the address on your remote control and receiver. If you notice that your receiver is changing channels or opening menus, but you're not using the remote control, a quick change of address should fix the problem.

- 1 Press SYSTEM INFO on the receiver's front panel. The **System Information** screen displays and shows the **Primary Remote Address** (for TV1, typically using IR) and the **Secondary Remote Address** (for TV2, typically using UHF).

Write down the TV2 remote address shown: \_\_\_\_\_

- 2 Press and hold SAT on your remote control for about three seconds, until all of the mode buttons light up, and then let go of SAT.
- 3 Add one to the address that you wrote down in step 1, and use the NUMBER PAD to enter that number (between 1 and 28).

- 4 Press **POUND (#)**. If you entered the address correctly, the **SAT** button will flash three times. Write down the number you entered in the space provided on the inside back cover of this guide.
- 5 Press **RECORD**. Make sure the **Secondary Remote Address** you see on the **System Information** screen is the same as the one you entered in step 3. If it isn't, the remote control cannot operate the receiver. Press **RECORD** a second time.
- 6 Select **Done** to close the **System Information** screen.

**Note:** This remote control may have features not used by your receiver.

## CHANGING BETWEEN UHF AND IR USING THE UHF/IR SWITCH



All receiver models (*except* the ViP222, ViP222k, ViP622 DVR, ViP722 DVR or ViP722k DVR receivers) must use switch position **IR** or the remote will not control the receiver.

Your remote has a switch to change the type of signaling that your remote control uses. It comes preset to the **UHF** position, but if you have a clear line of sight to your receiver, you can change the setting to the **IR** position to eliminate the possibility of any other UHF remote control interfering with yours.

- 1 Remove the battery cover from the remote control.
- 2 Use a small screw driver or a paper clip to carefully change the setting.
- 3 Put the battery cover back on the remote control.
- 4 Use the **SYSTEM INFO** button on the front panel to open the **System Information** screen.
- 5 Press **RECORD** on the remote control.
- 6 Make sure the remote address on the receiver's **System Information** screen shows the correct information:

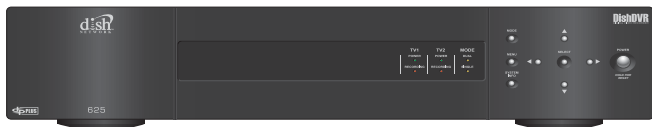
- Switch Position **UHF—IR/UHF**
- Switch Position **IR—IR only**



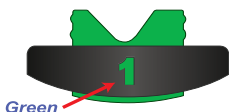
## SETTING UP A TV1 UHF PRO REMOTE FOR THE DISH PLAYER-DVR 522 AND 625 ONLY

Use these special instructions only if you are going to use the green 1 UHF Pro key to control the TV1 side of a DISH Player-DVR 522 or DISH Player-DVR 625.

***If you have a DISH Player-DVR 522 or 625:***



***and want to use UHF Pro with TV1, use this key:***



When you are finished setting up the remote control, you'll be able to operate the TV1 side of your DISH Player-DVR 522 or 625 from long distances.

- 1 Make sure the key is installed as described on pages C-1 and C-2.
- 2 Make sure the UHF Antenna is attached to the REMOTE ANTENNA input on the back of the receiver.
- 3 Using the receiver's front panel buttons, press **MENU**. Select the following on-screen items in this sequence:
  - a. **System Setup.**
  - b. **Installation.**
  - c. **TV1 UHF Pro Setup.**
- 4 Select **Enable** from the **TV1 UHF Pro Setup** screen.
- 5 Select **System Info** to open the **System Information** screen.



- 6 Use the **ARROW** buttons to move the highlight to the TV1 remote address (the **1** **Rem Addr** box as shown below). This is important—if you do not move the highlight, your remote control will change the receiver's TV2 remote address (the **2** **Rem Addr** box) and cause your Remote Control 1 to control the TV2 side of your receiver.



**Note:** Highlight the **1** **Rem Addr** (the lighter area in the graphic above).

- 7 Press the **RECORD** button on the green TV1 remote control you are setting up. If you get a warning that tells you to pick another address, continue on to the next step. If no warning appears, go to step 12 of this procedure.
- 8 On the remote control, press and hold the **SAT** mode button for about three seconds, until all the mode buttons light up, and then release the **SAT** button. The **SAT** mode button will blink.
- 9 Use the number buttons to enter any number from 1 to 28, *except* for the address shown for **2** on your screen.
- Write down the number you entered: \_\_\_\_\_
- 10 Press the **POUND** (#) button. If you entered the address correctly, the **SAT** mode button will flash three times. Press **RECORD** on the remote.
- 11 Make sure the **System Information** screen shows **UHF** and that this address matches the number that you entered in step 9.
- 12 Select **Done** to close the **System Information** screen. If nothing happens, press **RECORD**, and then select **Done**.



## EQUIPMENT CODES

These tables contain the manufacturer codes for programming the remote control to operate your TV, a DVD player or VCR, or an audio receiver or amplifier. Every attempt has been made to include all codes. If your equipment brand is not listed or if the codes do not work, the remote may not control your equipment. In some cases codes may operate some but not all buttons shown in this guide.

### TV CODES

**Programming in AUX mode:** Use these codes to program in TV mode. If programming a second TV in AUX mode on your remote control, press 0 before entering the TV code.

*Table continues on next page*

<b>Abex</b> 658 730	<b>Capehart</b> 519 627
<b>Acer</b> 511	<b>Carnivale</b> 627
<b>Action</b> 662	<b>Carver</b> 761
<b>Admiral</b> 521 572 675 739 834 835	<b>CCE</b> 528 816
<b>Advent</b> 653 842 912	<b>Celebrity</b> 652 795 797 798 807
<b>Adventura</b> 840	<b>Celera</b> 744 745
<b>Aiko</b> 727 778	<b>Changhong</b> 744 745
<b>Akai</b> 570 573 592 612 627 652 754 795 807 808 906 907 908	<b>Cineral</b> 697
<b>Albatron</b> 692 804	<b>Circuit City</b> 627
<b>Alleron</b> 534	<b>Citizen</b> 506 516 523 524 525 526 590 627 654 657 658 664 680 727 778
<b>A-Mark</b> 620 804	<b>Clairtone</b> 698
<b>Ambassador</b> 686	<b>Clarion</b> 682
<b>America Action</b> 682	<b>Coby</b> 626 633
<b>Amtron</b> 657	<b>Colortyme</b> 573 627 654
<b>Anam</b> 682	<b>Colt</b> 660
<b>Anam National</b> 509 541 620 651 657 698	<b>Commercial Solutions</b> 645 650
<b>AOC</b> 505 506 519 520 573 582 620 627 653 654	<b>Concerto</b> 523 652 654
<b>Apex</b> 552 595 743 744 745 757 771 802 815	<b>Contec</b> 682
<b>Archer</b> 620 804	<b>Contec/Cony</b> 541 655 657 658 662
<b>Astar</b> 594	<b>Craig</b> 536 541 657 662 682 694
<b>Audiovox</b> 528 565 620 623 624 657 662 682 778 832	<b>Crosley</b> 761
<b>Aventura</b> 733	<b>Crown</b> 526 536 657
<b>Axon</b> 636	<b>CTX</b> 804
<b>Bang &amp; Olufsen</b> 514 665	<b>Curtis Mathes</b> 503 506 516 528 572 573 590 627 641 645 650 654 658 680 683 739 761 830 832
<b>Baycraft</b> 536	<b>CXC</b> 541 657 662 682
<b>Belcor</b> 627 773	<b>Cytron</b> 903 904
<b>Bell &amp; Howell</b> 590 675 683	<b>Daewoo</b> 505 524 528 530 531 573 627 630 653 654 658 684 719 727 778 816 832
<b>Benq</b> 511 535	<b>Daytron</b> 627 654 658
<b>Bradford</b> 657 682	<b>Dell</b> 518 676 772 773 774
<b>Brilliant</b> 558	<b>Denon</b> 786
<b>Brockwood</b> 627	<b>DiamondVision</b> 546 643 659
<b>Broksonic</b> 682 748 750 752 754 834 899 908	<b>Dimensia</b> 503 645 830
<b>ByD:sign</b> 792	<b>DISH Network</b> 742 763
<b>Candle</b> 506 523 525 536 627 654 840	<b>Dixi</b> 566 620 761 897
<b>Candle/Citizen</b> 573	<b>Dumont</b> 501 627 711 813
	<b>Durabrand</b> 533 627 682 733 834 843

## TV CODES (CONTINUED)

<b>Dwin</b> 572 739	<b>JBL</b> 566 656 761 897
<b>Electroband</b> 652 795 797 798 807	<b>JCB</b> 652 795 797 798 807
<b>Electrograph</b> 507	<b>JC Penney</b> 503 505 506 508 516 525
<b>Electrohome</b> 573 627 651 652 654	543 595 627 631 645 653 654 658
709 728 795 807	680 690 728 730 802 830 857
<b>Element</b> 591 669	<b>Jensen</b> 502 537 556 573 627 653 654
<b>Emerson</b> 528 534 536 541 573 590	842 912
618 627 636 642 646 654 655 657	<b>JVC</b> 508 557 559 642 649 655 676
658 662 664 682 683 733 777 816	726 735 736 737 812 817
832 834 846 899	<b>Kawasho</b> 561 573 627 652 654 795
<b>Emprex</b> 597	807
<b>Envision</b> 506 573 627 654	<b>Kaypani</b> 519
<b>Epson</b> 708	<b>KEC</b> 682
<b>ESA</b> 733	<b>Kenwood</b> 506 573 627 654 716
<b>Fisher</b> 542 590 595 683 802	<b>KLH</b> 595 744 745 802
<b>Fortress</b> 573	<b>Kloss</b> 561 627
<b>Fujitsu</b> 534 602 603 694	<b>Kloss Novabeam</b> 657 723 724 840
<b>Funai</b> 534 541 587 657 662 682 694	<b>Konka</b> 510
733 756	<b>KTV</b> 541 573 627 657 658 662 682
<b>Futuretech</b> 541 657 662 682 694	<b>LG</b> 553 627 653 654 693 718 766 773
<b>Gateway</b> 507 511 710	804
<b>GE</b> 503 508 509 528 543 544 627 645	<b>Lloyd's</b> 627 756
650 651 654 661 690 728 742 749	<b>Lloytron</b> 658
779 830 832 857 859	<b>Loewe</b> 566 656 761 897
<b>General Electric</b> 627	<b>Logik</b> 675
<b>Gibraltar</b> 501 627 711 813	<b>Luce</b> 699
<b>Go Video</b> 696	<b>Luxman</b> 523 627 654
<b>Goldstar</b> 505 523 545 566 573 627	<b>LXI</b> 503 566 590 595 627 631 635 645
653 654 655 658 693 720 730 761	650 654 656 683 744 761 771 802
897	830 897
<b>Gradiente</b> 540	<b>M. Wards</b> 500 505 506 534 543 567
<b>Granada</b> 627	568 795 807
<b>Grand</b> 627	<b>Magnasonic</b> 573 664
<b>Grunpy</b> 534 657 682	<b>Magnavox</b> 506 520 525 536 550 560
<b>Hallmark</b> 627 654	566 567 568 573 625 627 646 654
<b>Harley Davidson</b> 756	656 723 724 756 761 762 777 818
<b>Harman/Kardon</b> 561 627 761	827 828 829 838 839 887 888 891
<b>Harvard</b> 657 682	892 893 894 897
<b>Havermy</b> 572 739	<b>Magnin</b> 661
<b>Helios</b> 901	<b>Majestic</b> 675
<b>Hello Kitty</b> 528 832	<b>Marantz</b> 506 566 573 604 627 654
<b>Hewlett Packard</b> 712 911	656 761 897
<b>Hinari</b> 534	<b>Matsushita</b> 689
<b>Hisense</b> 759	<b>Maxent</b> 507 581
<b>Hitachi</b> 523 549 554 555 585 627 638	<b>Media Center</b> 721
654 655 658 756 786 788 789 790	<b>Megapower</b> 804
791	<b>Megatron</b> 627 654
<b>HP</b> 599 712 721 911	<b>MEI</b> 698
<b>Hyundai</b> 695	<b>Memorex</b> 529 590 627 648 653 654
<b>iLo</b> 559 596 625	675 683 834
<b>IMA</b> 657	<b>MGA</b> 504 505 506 542 571 573 627
<b>Infinity</b> 566 656 761 897	653 654 661 728
<b>InFocus</b> 616	<b>Midland</b> 501 508 645 650 658 711
<b>Initial</b> 625	730 813
<b>Insignia</b> 538 539 751	<b>Mintek</b> 625
<b>Inteq</b> 501 711 813	<b>Minutz</b> 857
<b>Janeil</b> 840	<i>Table continues on next page</i>

## TV CODES (CONTINUED)

**Mitsubishi** 504 505 542 570 571 572  
573 613 614 627 653 654 725 728  
739 787 799

**Mitsui** 769

**Monivision/Monovision** 692 804

**Montgomery Ward** 675

**Motorola** 521 572 651 739 835

**MTC** 505 506 516 523 573 627 653  
654 680

**Multitech** 657 682

**Multivision** 810

**NAD** 595 627 631 635 637 654 744  
771 802

**National** 509

**NEC** 505 506 507 517 523 573 627  
651 652 653 654 731 732

**Net-TV** 517 586 609 801

**Nikkai** 613

**Nikko** 627 654 727 778

**Norcent** 579

**Normandic** 717

**Noshi** 681

**Novabeam** 561 627

**NTC** 727 778

**Nyon** 627

**Olevia** 564 578 580 910

**Onwa** 541 657 662 682

**Optimus** 590 637 689

**Optonica** 521 572 607 739 835

**Orion** 694 726 834 899

**Osaki** 687

**Panasonic** 508 509 512 566 577 619  
634 644 647 651 656 662 685 689  
700 729 734 761 765 780 784 811  
819 820 821 822 823 860 861 862  
867 868 869 870 871 872 873 874  
875 876 877 878 879 880 881 882  
883 884 885 886 889 890 895 896  
897 900

**Panavision** 734 811

**Penney** 595 627 645 650 661 744  
771 802

**Philco** 505 506 525 532 536 568 573  
627 651 653 654 655 656 658 723  
724 761

**Philips** 525 527 548 550 563 566 621  
625 627 651 655 656 658 690 723  
724 747 761 770 782 824 825 826  
827 828 839 887 888 891 892 893  
894 897

**Philips Magnavox** 527 550 761 782  
826 827 828

**Pilot** 627 658

**Pioneer** 547 576 627 637 654

**PlasmSync** 610

**Polaroid** 591 627 669 670 671 678  
744 745 751 766 773 814

**Portland** 505 573 627 653 654 658  
727 778

**Price Club** 680

**Prima** 653 673 674 842 912

**Princeton** 562 804

**Prism** 508

**Proscan** 503 645 650 742 749 830

**Proton** 513 519 536 585 627 654 655  
658

**Protron** 589

**Proview** 902

**Pulsar** 501 627 711 813

**Quasar** 508 509 651 689 700 784

860 861 862 867 868 869 870 871

872 873 874 875 876 877 878 879

880 881 882 883 884 885 886 889

890 895 896

**Radio Shack** 503 541 590 627 645

650 662 682 683 756 830

**Radio Shack/Realistic** 590 607 650

652 654 655 657 658 683 730 830

**RCA** 503 505 522 627 630 636 641

645 650 651 653 654 661 742 749

776 779 805 830 831 863 864 902

**Realistic** 503 590 627 645 682 683  
830

**Rhapsody** 701

**Runco** 501 627 711 813

**Sampo** 506 507 519 627 654 658 730  
746 753 763

**Samsung** 505 506 516 523 526 566

573 601 627 653 654 655 658 680

707 717 730 738 755 761 794 833

858 897

**Samsux** 702

**Samwon** 620

**Sansei** 697

**Sansui** 726 754 756 834 899 908

**Sanyo** 590 611 627 661 683

**SBR** 566 761 897

**Sceptre** 677

**Schneider** 566 761 897

**Scimitsu** 773

**Scotch** 627 654

**Scott** 534 541 627 654 655 657 658  
662 682

**Sears** 503 523 534 541 542 558 590

595 627 631 635 645 650 654 658

683 733 744 756 761 771 802 830

841 846

**Seimitsu** 627

**Semivox** 682

**Semp** 595 771

**Sharp** 521 572 585 605 607 627 628  
629 654 655 658 739 740 803 835

836 898

**Sharper Image** 703

**Sheng Chia** 572 739

**Shogun** 627

**Signature** 675

*Table continues on next page*

## TV CODES (CONTINUED)

<b>Silver</b> 573	<b>Thomson</b> 705
<b>Simpson</b> 525	<b>TMK</b> 523 573 627 654
<b>Solavox</b> 613	<b>TNCi</b> 501 711 813
<b>Sony</b> 500 640 652 756 758 781 783 795 796 797 798 806 807 837 844 845	<b>Toshiba</b> 516 526 590 595 617 622 631 635 666 680 683 688 744 750 754 768 771 785 793 800 802 847 848 849 850 851 852 854 855 865 866 908 909
<b>Soundesign</b> 525 534 536 541 627 654 657 662 682	<b>Tosonic</b> 698
<b>Spectricon</b> 520 620 627	<b>Totevision</b> 658
<b>Squareview</b> 694 733 841 846	<b>Toyomenko</b> 627
<b>SSS</b> 505 541 573 627 657 662 682	<b>Trical</b> 706
<b>Starlite</b> 657 682	<b>Trutech</b> 584
<b>Studio Experience</b> 692	<b>TVS</b> 834
<b>Supra</b> 523 627	<b>Universal</b> 543 690 857
<b>Supre-Macy</b> 840	<b>Universum</b> 687
<b>Supreme</b> 652 795 797 798 807	<b>V Inc.</b> 562 575
<b>Susumu</b> 687	<b>Vector Research</b> 506 627
<b>SVA</b> 515 901 905	<b>Victor</b> 557
<b>Sylvania</b> 506 525 536 566 568 569 573 618 627 646 654 656 672 679 723 724 733 756 761 764 777 897	<b>Video Concepts</b> 570
<b>Symphonic</b> 632 657 662 679 682 694 733 756 841 846	<b>Vidikron</b> 761
<b>Syntax</b> 564	<b>Vidtech</b> 505 573 627 653 654
<b>Syntax-Brilliant</b> 558 564	<b>Viewsonic</b> 507 551 562 575 583 600 606 760 796
<b>Tandy</b> 521 572 739 835	<b>Viking</b> 840
<b>Tatung</b> 509 588 651	<b>Viore</b> 907
<b>Technics</b> 508 689	<b>Vizio</b> 511 535 562 575 593 598 773
<b>Technol ACE</b> 534	<b>Wards</b> 503 534 536 573 595 607 627 645 653 654 656 675 690 715 723 724 761 802 830 857
<b>Techview</b> 590 683	<b>Waycon</b> 595 744 771 802
<b>Techwood</b> 508 523 573 627 654	<b>Westinghouse</b> 528 562 574 575 795 797 798 807 809 832 856
<b>Teco</b> 704	<b>White Westinghouse</b> 528 816 832 834
<b>Teknika</b> 504 505 512 516 523 524 525 534 536 541 573 644 653 654 655 657 658 662 675 680 682 685 727 761 778	<b>Yamaha</b> 505 506 573 627 653 654
<b>Telecaption</b> 688	<b>York</b> 627
<b>Telefunken</b> 794	<b>Zenith</b> 501 553 555 615 627 639 675 693 711 748 752 756 766 773 775 778 813 834 853 899
<b>Tera</b> 513	<b>Zonda</b> 620 804
<b>Thomas</b> 627 756	
<b>Thompson</b> 709	

## VCR CODES

**Programming in AUX mode:** Use these codes to program the VCR in the DVD mode on your remote control. If programming the VCR in AUX mode on your remote control, press 1 before entering the VCR code.

*Table continues on next page*

<b>ABS</b> 792	<b>Goldstar</b> 592 594 676 678
<b>Adventura</b> 588 594	<b>Goodmans</b> 585
<b>Aiwa</b> 501 588 594 676 678	<b>Gradiente</b> 588 594
<b>Akai</b> 513 518 568 682 772	<b>Granada</b> 549
<b>Alienware</b> 792	<b>Grundig</b> 556 801
<b>American High</b> 554	<b>Harley Davidson</b> 588 594
<b>Americast</b> 917	<b>Harman/Kardon</b> 568 592
<b>Apex</b> 517	<b>Headquarter</b> 581
<b>ASA</b> 556 801	<b>Hewlett Packard/HP</b> 792
<b>Asha</b> 675	<b>Hi-Q</b> 789
<b>Audio Dynamics</b> 592	<b>Hitachi</b> 536 538 539 540 588 595 597 682
<b>Audiovox</b> 676 678	<b>Howard Computers</b> 792
<b>Bang &amp; Olufsen</b> 537 794	<b>Hush</b> 792
<b>Beaumarck</b> 675	<b>iBuyPower</b> 792
<b>Bell &amp; Howell</b> 581	<b>Insignia</b> 507
<b>Broksonic</b> 511 515 516 525 559	<b>Instant Replay</b> 554
<b>Calix</b> 676 678	<b>ITT</b> 675
<b>Candle</b> 534 592 594 675 676 678	<b>JC Penney</b> 554 581 591 592 595 676 678 776
<b>Candle/Citizen</b> 675 676	<b>JCL</b> 554
<b>Canon</b> 554	<b>Jensen</b> 595 682 776
<b>Canon</b> 554	<b>JVC</b> 503 504 523 526 527 545 561 562 581 592 594 682 795
<b>CineVision</b> 529	<b>Kenwood</b> 562 581 592 594 682
<b>Colortyme</b> 592	<b>Kodak</b> 554 676 678
<b>Colt</b> 535	<b>LG</b> 507 676 678
<b>Craig</b> 591 676 678 789	<b>Linksys</b> 792
<b>Curtis Mathes</b> 554 585 592 594 605 607 649	<b>Lloyd's</b> 588 594
<b>Cybernex</b> 675	<b>Luxor</b> 567
<b>Cyberpower</b> 792	<b>LXI</b> 676 678
<b>Daewoo</b> 534 536 559 588 796	<b>M. Wards</b> 512 554 585 591
<b>DBX</b> 592	<b>Magnasonic</b> 536
<b>Dell</b> 792	<b>Magnavox</b> 533 554 556 594 797 798 801 803 804
<b>DiamondVision</b> 532	<b>Magnin</b> 675 676 678
<b>Dimensia</b> 585 607 649	<b>Marantz</b> 554 556 581 585 592 594 801
<b>Dumont</b> 549	<b>Marta</b> 676 678
<b>Durabrand</b> 533	<b>Matsushita</b> 554
<b>Dynatech</b> 588 594	<b>Media Center PC/Microsoft</b> 792
<b>Electrohome</b> 512 676 678	<b>MEI</b> 554
<b>Electroponic</b> 676 678	<b>Memorex</b> 515 516 533 549 550 554 581 585 588 594 676 678 786 789
<b>Emerson</b> 508 512 518 534 536 554 559 568 588 594 676 678 798 804	<b>MGA</b> 512 567 568 675
<b>ESA</b> 502	<b>MGN Technology</b> 675
<b>Finlandia</b> 549	<b>Midland</b> 591
<b>Finlux</b> 549 556 801	<b>Minolta</b> 595 776
<b>Fisher</b> 549 581 789	<b>Mitsubishi</b> 512 562 567 568 595 607 776
<b>Fuji</b> 554 772	
<b>Funai</b> 588 594 804	
<b>Garrard</b> 588 594	
<b>GE</b> 541 554 585 591 605 607 649 675	
<b>Go Video</b> 522 524	

## VCR CODES (CONTINUED)

<b>Motorola</b> 554	<b>Sanyo</b> 549 581 675 789
<b>MTC</b> 544 594	<b>SBR</b> 556 801
<b>Multitech</b> 588 591 594	<b>Scott</b> 534 559
<b>NEC</b> 562 581 592 594 682	<b>Sears</b> 549 554 581 594 595 676 678 776 789
<b>Nikko</b> 676 678	<b>Sharp</b> 512 585 595 607 918
<b>Niveus Media</b> 792	<b>Shintom</b> 595 772
<b>Noblex</b> 675	<b>Shogun</b> 675
<b>Northgate</b> 792	<b>Singer</b> 554 791
<b>Olympus</b> 554	<b>Sony</b> 500 594 768 772 778 790 791 792 919
<b>Optimus</b> 676 678 786	<b>Stack</b> 792
<b>Optonica</b> 585	<b>Stack 9</b> 792
<b>Orion</b> 550	<b>STS</b> 554
<b>Panasonic</b> 554 614 628 770 777 780 781 782 783 784 786 787 788 799 809 810	<b>Superscan</b> 531 798 804
<b>Penney</b> 675 676 678	<b>Sylvania</b> 519 554 556 567 588 594 756 798 801 804
<b>Pentax</b> 592 776	<b>Symphonic</b> 588 594 804
<b>Pentex Research</b> 592 594	<b>Systemax</b> 792
<b>Philco</b> 554	<b>Tagar Systems</b> 792
<b>Philips</b> 554 556 585 801 803 804	<b>Tandy</b> 581
<b>Philips Magnavox</b> 801	<b>Tashiko</b> 676 678
<b>Pilot</b> 676 678	<b>Tatung</b> 682
<b>Pioneer</b> 562 776	<b>Teac</b> 588 594 682
<b>Polaroid</b> 517 530	<b>Technics</b> 554
<b>Presidian</b> 804	<b>Teknika</b> 554 588 594 676 678
<b>Proscan</b> 585 605 607 649	<b>TMK</b> 675
<b>Pulsar</b> 533	<b>Toshiba</b> 534 538 542 543 567 769 776 783 792
<b>Quarter</b> 581	<b>Totevision</b> 591 676 678
<b>Quartz</b> 581	<b>Touch</b> 792
<b>Quasar</b> 554 770 771 772 786 806	<b>UltimateTV</b> 649
<b>Radio Shack</b> 512 594 676 678	<b>Unitech</b> 675
<b>Radio Shack/Realistic</b> 554 581 588 676 678 789	<b>Vector Research</b> 534 592
<b>Radix</b> 676 678	<b>Victor</b> 561 562
<b>Randex</b> 676 678	<b>Video Concepts</b> 534 568 592
<b>RCA</b> 518 528 541 554 585 591 595 605 607 649 675 773 774 775 776	<b>Videomagic</b> 676 678
<b>Realistic</b> 534 549 554 581 585 588 594 676 678 789	<b>Videosonic</b> 591
<b>Ricavision</b> 792	<b>Viewsonic</b> 792
<b>Ricoh</b> 791	<b>Wards</b> 534 554 588 594 595 676 678 776 789
<b>Runco</b> 533	<b>White Westinghouse</b> 588
<b>Salora</b> 567	<b>XR-1000</b> 554 588 594
<b>Samsung</b> 506 524 534 591 755 807	<b>Yamaha</b> 581 592 594 682
<b>Sanky</b> 533	<b>Zenith</b> 500 507 533 594 772 779 791
<b>Sansui</b> 515 516 544 550 562 594 682	<b>ZT Group</b> 792

## DVD PLAYER CODES

**Programming in AUX mode:** Use these codes to program your remote control in DVD mode. If programming in AUX mode on your remote control, press 1 before entering the listed DVD Player code.

*Table continues on next page*

<b>Accurian</b> 602	<b>ESA</b> 570 587
<b>Advent</b> 572	<b>Fahrenheit</b> 713
<b>Aiwa</b> 694	<b>Fisher</b> 659
<b>Akai</b> 656 752 815	<b>Flex Vision</b> 717
<b>Alco</b> 765	<b>Fun TV</b> 718
<b>Allegro</b> 683	<b>Funai</b> 570 617 658 829
<b>Alpine</b> 653	<b>Gateway</b> 610
<b>Amphion MediaWorks</b> 586	<b>GE</b> 702 703 720 749 816 835
<b>AMW</b> 586	<b>Go Video</b> 610 692 693 822 826
<b>Anaba</b> 687	<b>GPX</b> 704 826 882
<b>Anam</b> 688	<b>Gradiente</b> 699 716
<b>Apex</b> 654 655 744 757 835 839 851	<b>Greenhill</b> 835
<b>Apple</b> 642	<b>Grundig</b> 565 577
<b>Archos</b> 885	<b>Harman/Kardon</b> 715
<b>Arrgo</b> 833	<b>Hitachi</b> 606 660 668 705 706 707 823 860
<b>Aspire</b> 558	<b>Hiteker</b> 654 655 744
<b>Astar</b> 612	<b>Honda</b> 721
<b>Audiologic</b> 698	<b>Honyas</b> 726
<b>Audiovox</b> 580 630 765 826 837	<b>iLive</b> 856
<b>Axion</b> 867	<b>iLo</b> 837
<b>B&amp;K</b> 701	<b>Ingelen</b> 876
<b>Bang &amp; Olufsen</b> 569 580	<b>Initial</b> 835
<b>Bel Canto Design</b> 719	<b>Insignia</b> 570 673 824 871
<b>Blaupunkt</b> 835	<b>Integra</b> 551 779
<b>Blue Parade</b> 719	<b>Irradio</b> 608
<b>BOSE</b> 758 811	<b>Jamo</b> 728
<b>BOSS</b> 576	<b>Jaton</b> 738
<b>Broksonic</b> 656 752 815	<b>JBL</b> 715
<b>California Audio Labs</b> 699 716	<b>Jeken</b> 878
<b>Cambridge SoundWorks</b> 870	<b>Jensen</b> 557
<b>CAVS</b> 708	<b>JMB</b> 656 815
<b>CineVision</b> 626	<b>JVC</b> 553 603 604 620 621 622 623 625 689 850 861 862 863 872 898
<b>Clarion</b> 696	<b>Jwin</b> 742
<b>Classic</b> 695 826 882	<b>Karcher</b> 864
<b>Coby</b> 557 634	<b>Kawasaki</b> 765
<b>Criterion</b> 712	<b>Kendo</b> 848
<b>Curtis</b> 685	<b>Kenwood</b> 579 699 700 716 737
<b>Curtis Mathes</b> 684	<b>KLH</b> 765 835
<b>CyberHome</b> 833	<b>Konka</b> 753
<b>Cytron</b> 904	<b>Koss</b> 564 723 745 873
<b>Daewoo</b> 626 657 859	<b>Lasonic</b> 593
<b>Denon</b> 578 697 699 700 716 737 892	<b>Lenox</b> 560 826
<b>Desay</b> 598	<b>Lexia</b> 857
<b>DiamondVision</b> 637 641	<b>Lexicon</b> 743
<b>Disney</b> 617	<b>LG</b> 615 673 824 899
<b>Dual</b> 871	<b>Lifetec</b> 634
<b>Durabrand</b> 826	<b>Limit</b> 857
<b>DVD2000</b> 699 716	<b>Liquid Video</b> 564
<b>Eclipse</b> 574	<b>LiteOn</b> 602 610
<b>Eltax</b> 685	<b>Loewe</b> 746
<b>Emerson</b> 658	
<b>Enterprise</b> 824	

## DVD CODES (CONTINUED)

<b>LogicLab</b> 857	<b>Rotel</b> 553 850 861
<b>Logix</b> 852	<b>Rowa</b> 555
<b>Lumatron</b> 673 824	<b>Saba</b> 762
<b>Luxman</b> 844	<b>Sampo</b> 724
<b>Luxor</b> 848	<b>Samsung</b> 571 606 643 644 652 667
<b>Magnavox</b> 565 570 577 601 617 650	668 691 699 716 740 741 805 820
658 661 672 674 679 854	821 844 845 849 866 869 875 881
<b>Malata</b> 747	895 896 900
<b>Marantz</b> 565 577	<b>Sansui</b> 656 725 754 815
<b>Memorex</b> 709	<b>Sanyo</b> 609 656 659 815
<b>Microsoft</b> 703 720 749 816	<b>Sensory Science</b> 610
<b>Mintek</b> 710	<b>Sharp</b> 573 617 669 727 865 903
<b>Mitsubishi</b> 767	<b>Sharper Image</b> 763
<b>Momitsu</b> 748	<b>Sherwood</b> 870
<b>NAD</b> 673 824	<b>Shinco</b> 589
<b>Nakamichi</b> 596	<b>Shinsonic</b> 731
<b>Nesa</b> 835	<b>Sigma Designs</b> 760
<b>Next Base</b> 680	<b>SonicBlue</b> 683
<b>Nexxtech</b> 599	<b>Sony</b> 582 613 618 632 670 671 729
<b>Niro</b> 750	730 731 817 818 827 830 831 832
<b>Nissoho Iwai</b> 718	836 838 843 846 847 858 868 883
<b>Norcent</b> 634 711	884 902
<b>Onkyo</b> 551 672	<b>Sungale</b> 597
<b>Oppo</b> 566	<b>Superscan</b> 570
<b>Optiview</b> 687	<b>SVA</b> 800
<b>Oritron</b> 564 723	<b>Sylvania</b> 570 617 619 631 639 645
<b>Panasonic</b> 624 627 638 662 663 672	658 764 829
699 714 716 734 737 813 840 841	<b>Symphonic</b> 617 658
855	<b>Teac</b> 732 765
<b>Philco</b> 686	<b>Technics</b> 699 716 733
<b>Philips</b> 565 572 577 617 672 764 766	<b>Techwood</b> 664
873 874	<b>Terapin</b> 887
<b>Pioneer</b> 665 719 812 877 879 880	<b>Theta Digital</b> 719
<b>Polaroid</b> 586 617 635 636 640 647	<b>TiVo</b> 888
651 677 851	<b>Toshiba</b> 575 583 584 646 648 656 672
<b>Polk Audio</b> 565 577	735 736 814 815 819 825 828 834
<b>Portland</b> 751	893 894
<b>Presidian</b> 617	<b>Tredex</b> 889
<b>Prima</b> 759	<b>Trutech</b> 833
<b>Princeton</b> 760	<b>TView</b> 687
<b>Proceed</b> 654 655 744	<b>Urban Concepts</b> 672
<b>Proscan</b> 703 720 749 816	<b>US Logic</b> 681
<b>Provision</b> 761	<b>Venturer</b> 765
<b>Pye</b> 674	<b>Vizio</b> 897
<b>Qwestar</b> 723	<b>Vocopro</b> 890
<b>RCA</b> 616 666 690 703 719 720 749	<b>Westinghouse</b> 629
765 816 835 842 901	<b>Xbox</b> 703 720 749 816
<b>Regent</b> 560	<b>Xwave</b> 891
<b>Rio</b> 683	<b>Yamaha</b> 565 577 699 716 737 739 853



## TUNER/AMPLIFIER CODES

**Programming in AUX mode:** Press 2 before entering the code for your tuner/amplifier or other audio device on your remote control.

*Table continues on next page*

<b>Accuphase</b> 690	<b>Classic</b> 819
<b>Acoustic Research</b> 703 853	<b>Coby</b> 811
<b>Acurus</b> 691	<b>Counterpoint</b> 754
<b>ADC</b> 652	<b>Craig</b> 856
<b>Adcom</b> 690	<b>Creative</b> 723
<b>Admiral</b> 747	<b>Criterion</b> 734
<b>ADS</b> 748	<b>Crown</b> 857
<b>Aiwa</b> 636 667 681 718 720 725 730 839	<b>Curtis</b> 815
<b>Akai</b> 740	<b>Curtis Mathes</b> 772
<b>Alco</b> 659	<b>Daewoo</b> 727
<b>Alpine</b> 749	<b>Dell</b> 729
<b>Altec Lansing</b> 738	<b>Delphi</b> 755
<b>AMC</b> 855	<b>Denon</b> 669 670 680 759 760 762 809
<b>Amphion Media Works</b> 660	<b>Digital Audio Control</b> 688
<b>Amplifier Technologies</b> 710	<b>Durabrand</b> 698
<b>AMW</b> 660	<b>Dynalab</b> 858
<b>Anam</b> 653	<b>EAD</b> 756
<b>Angstrom</b> 692	<b>Eclipse</b> 665
<b>Anthem</b> 750	<b>Elan</b> 699
<b>Apex</b> 812	<b>Emerson</b> 820
<b>Aragon</b> 691	<b>ESA</b> 757
<b>Arcam</b> 726	<b>Fisher</b> 850
<b>Atlantic Technology</b> 712	<b>Fosgate</b> 700
<b>Audio Research</b> 751	<b>Garrard</b> 851
<b>Audio Source</b> 693	<b>Gateway</b> 743
<b>Audiotronic</b> 685	<b>GE</b> 638
<b>Audiovox</b> 669 826	<b>Glory Horse</b> 728
<b>B&amp;K</b> 752	<b>Go Video</b> 742
<b>Bang &amp; Olufsen</b> 676	<b>Goldstar</b> 814
<b>Bel Canto Design</b> 690	<b>GPX</b> 834
<b>Biamp</b> 695	<b>Gradiente</b> 682
<b>Blaupunkt</b> 854	<b>Harman/Kardon</b> 640 685 725
<b>BOSE</b> 639 656 761	<b>Hitachi</b> 850
<b>Boston Acoustics</b> 713	<b>Honyas</b> 770
<b>Brix</b> 744	<b>iLive</b> 835
<b>Brumester</b> 647	<b>Initial</b> 735
<b>California Audio Labs</b> 686	<b>Inkel</b> 714
<b>Cambridge SoundWorks</b> 831	<b>Insignia</b> 825
<b>Capetronic</b> 652	<b>Integra</b> 650
<b>Carver</b> 685 725	<b>Jamo</b> 837
<b>Cary Audio Design</b> 689	<b>JBL</b> 642
<b>Casio</b> 717	<b>Jensen</b> 775
<b>CCE</b> 802	<b>JVC</b> 637 663 786 827 848
<b>Chase Technologies</b> 687	<b>Kenwood</b> 658 662 668 774 795 828 829 830 840
<b>Cinema Sound</b> 696	<b>KLH</b> 659
<b>Clarinet</b> 717	<b>Knoll Systems</b> 701
<b>Clarion</b> 753	<b>Koss</b> 739
<b>Classe</b> 697	<b>Lasonic</b> 746

## ***TUNER/AMPLIFIER CODES (CONTINUED)***

<b>Left Coast</b> 640	<b>Samsung</b> 807
<b>Lenoxx</b> 736	<b>Sansui</b> 685 725
<b>Lexicon</b> 724	<b>Sanyo</b> 824 850
<b>LG</b> 836	<b>Schneider</b> 787
<b>Linn</b> 685 725	<b>Scientific Atlanta</b> 721
<b>Liquid Video</b> 739	<b>Scott</b> 715
<b>Lloyds</b> 717	<b>Sharp</b> 832
<b>Logitech</b> 702	<b>Sharper Image</b> 728
<b>Luxman</b> 704	<b>Sherwood</b> 833
<b>LXI</b> 716	<b>Shinsonic</b> 789
<b>Magnadyne</b> 776	<b>Shure</b> 641
<b>Magnavox</b> 652 654 685 725	<b>Sonic Blue</b> 661
<b>Marantz</b> 640 645 685 725 764	<b>Sony</b> 683 730 765 766 769 771 773 778 784 793 794 803 846
<b>Mark Levinson</b> 705	<b>Soundesign</b> 638
<b>McIntosh</b> 706	<b>Soundmatters</b> 763
<b>MCS</b> 719	<b>Soundstream</b> 709
<b>Memorex</b> 777	<b>Stereophonics</b> 635 845
<b>Midland</b> 707	<b>STS</b> 792
<b>Mitsubishi</b> 859	<b>Sunfire</b> 658 840
<b>Modulaire</b> 717	<b>Symphonic</b> 747
<b>Motorola</b> 737	<b>Tag McLaren</b> 796
<b>NAD</b> 648	<b>Teac</b> 653 659
<b>Nakamichi</b> 649	<b>Technics</b> 643 672 768 804 805 808
<b>NEC</b> 641	<b>Techwood</b> 798
<b>Nexxtech</b> 711	<b>Thomson</b> 800
<b>Nikko</b> 708	<b>Thorens</b> 685
<b>Niro</b> 779	<b>Toshiba</b> 822
<b>Norcent</b> 731	<b>Vector Research</b> 801
<b>Nova</b> 780	<b>Venturer</b> 659
<b>Omnifi</b> 745	<b>Victor</b> 637 827
<b>Onkyo</b> 671 785 788 790 791 838	<b>Wards</b> 635 638 685 725
<b>Optimus</b> 635 652 653 772 845	<b>Yamaha</b> 646 650 651 655 657 663 684 732 733 786 823 841 847 848 849
<b>Oritron</b> 739	<b>Yorx</b> 717
<b>Panasonic</b> 643 677 678 783 797 799 808 810 817 818 821	<b>Zenith</b> 814
<b>Parasound</b> 647	
<b>Penney</b> 717	
<b>Philco</b> 781	
<b>Philips</b> 640 685 725	
<b>Philips Magnavox</b> 860	
<b>Pioneer</b> 635 652 664 666 767 772 806 813 844 845	
<b>Polaroid</b> 679	
<b>Polk Audio</b> 640 645 685 764	
<b>Proscan</b> 704 853	
<b>Proton</b> 654	
<b>Pyle</b> 782	
<b>Quasar</b> 799	
<b>Radio Shack</b> 728	
<b>RCA</b> 635 652 653 659 675 703 772 842 845 852 853	
<b>RCA &amp; Dimensia</b> 703 853	
<b>Realistic</b> 717	
<b>Regent</b> 736	
<b>Rio</b> 661	
<b>Rotel</b> 674	
<b>Saba</b> 741	

## ***DIGITAL VIDEO RECORDER (DVR) CODES***

**Programming in AUX mode:** Press 1 before entering the listed code to program your remote control in AUX mode.

<b>ABS</b> 792	<b>Niveus Media</b> 792
<b>Alienware</b> 792	<b>Northgate</b> 792
<b>Americast</b> 917	<b>Pace</b> 914
<b>Bang &amp; Olufsen</b> 794	<b>Panasonic</b> 907
<b>BellSouth</b> 917	<b>Philips</b> 521 548 906 910
<b>CyberPower</b> 792	<b>Pioneer</b> 914
<b>Dell</b> 792	<b>Proscan</b> 916
<b>Director</b> 913	<b>RCA</b> 521 911 916
<b>Gateway</b> 792	<b>ReplayTV</b> 907 912
<b>General Instrument</b> 913	<b>Samsung</b> 521
<b>GOI</b> 722	<b>Scientific Atlanta</b> 914
<b>Hewlett Packard</b> 792	<b>Sharp</b> 573
<b>HNS</b> 521	<b>Sonic Blue</b> 907
<b>Howard Computers</b> 792	<b>Sony</b> 510 792 905 908 909
<b>HP</b> 792	<b>Stack 9</b> 792
<b>HTS</b> 722	<b>Supercable</b> 915
<b>Hughes Network Systems</b> 521 910	<b>Systemax</b> 792
<b>Humax</b> 910	<b>Tagar Systems</b> 792
<b>Hush</b> 792	<b>TiVo</b> 510 520 548 905 906 908 909
<b>iBUYPOWER</b> 792	910 911
<b>Jerrold</b> 913	<b>Toshiba</b> 792
<b>JVC</b> 722	<b>Touch</b> 792
<b>Linksys</b> 792	<b>UltimateTV</b> 916
<b>Media Center PC</b> 792	<b>Viewsonic</b> 792
<b>Microsoft</b> 792	<b>Voodoo</b> 792
<b>Mind</b> 792	<b>Zenith</b> 917
<b>Motorola</b> 913	<b>ZT Group</b> 792

## TV/VCR COMBO CODES

**Programming for combination equipment:** Program the remote control in TV mode using the TV code and then in DVD mode (or in AUX—press 1 before entering the VCR code) using the VCR code.

	TV Code	VCR Code
<b>Aiwa</b>	667	501
<b>Bang &amp; Olufsen</b>	665	537
<b>Colt</b>	660	535
<b>GE</b>	661	675
<b>Magnin</b>	661	675
<b>MGA</b>	661	675
<b>Magnavox</b>	888	797
	887	797
<b>Panasonic</b>	765	799
<b>Penney</b>	661	675
<b>Philips</b>	887	801
<b>Quasar</b>	870	770
	868	770
	860	770
	860	771
	860	806
<b>RCA</b>	503	649
	661	675
	749	775
	830	649
<b>Samsung</b>	755	807
<b>Sanyo</b>	661	675
<b>Sylvania</b>	756	519

## TV/DVD COMBO CODES

**Programming for combination equipment:** Program the remote control in TV mode using the TV code and then in DVD mode (or AUX—press 1 before entering the DVD code) using the DVD code.

	TV Code	DVD Code
<b>Apex</b>	757	757
<b>Audiovox</b>	624	630
<b>Axion</b>	636	867
<b>Broksonic</b>	750	752
<b>Cytron</b>	904	904
<b>Magnavox</b>	839	650
	838	679
<b>Panasonic</b>	811	734
<b>Polaroid</b>	671	647
	678	677
	745	635
<b>RCA</b>	830	816
	830	749
	830	703
<b>Sansui</b>	754	754
<b>Sharp</b>	605	573
	898	573
<b>Sylvania</b>	764	764
	672	645
	777	639
	733	764
<b>Toshiba</b>	622	815
	800	646
	908	815
	865	814
	866	815
	750	815

## TV/DVD/TUNER COMBO CODES

**Programming for combination equipment:** Program the remote control in TV mode using the TV code, then in DVD mode using the DVD code, and then in AUX mode (press 2 before entering the tuner code) using the tuner code.

	TV Code	DVD Code	Tuner Code
<b>Panasonic</b>	811	734	678

## DVD/VCR COMBO CODES

**Programming for combination equipment:** Program the remote control in DVD mode using one of the listed DVD codes, and then in AUX mode, first pressing 1 and then using the listed VCR code.

	DVD Code	VCR Code
<b>GoVideo</b>	693	522
	822	524
<b>Panasonic</b>	734	780
	734	777
<b>RCA</b>	690	528
<b>Sansui</b>	815	515
<b>Sony</b>	817	778

## TV/VCR/TUNER COMBO CODES

	TV Code	VCR Code	Tuner Code
<b>Panasonic</b>	873	783	836
	874	784	833
	875	785	826
	876	786	825
	877	787	824
	878	788	822
	879	789	821
	880	790	820
	881	791	819
	882	792	818
	883	793	817
	884	794	816
	885	795	815
	889	809	808


## TV/DVD/VCR COMBO CODES

**Programming for combination equipment:** Program the remote control in TV mode using the TV code, then in DVD mode using the DVD code, and then in AUX mode (press 1 before entering the VCR code) using the VCR code.

	TV Code	DVD Code	VCR Code
<b>DiamondVision</b>	659	532	641

## TROUBLESHOOTING

What's Happening	What's Wrong	What You Can Do
While performing a remote control procedure, the remote control stops working.	If you don't press a button for 20-30 seconds in a programming sequence, the remote shuts off its programming function.	Start over again.
When you press a button on the remote control, the equipment doesn't do what you expect.	<ul style="list-style-type: none"> <li>The remote may not be in the mode for the equipment you want to control.</li> <li>The remote control needs to be pointed right at the TV (or other equipment).</li> <li>The remote control may be missing batteries, the batteries in the remote may be inserted the wrong way, or maybe the batteries are weak or dead.</li> <li>The remote isn't set up to control the equipment.</li> <li>No function is assigned in this equipment mode to the button you pressed.</li> </ul>	<ul style="list-style-type: none"> <li>Press the correct mode button to set the remote to the mode for the equipment you want to control.</li> <li>The remote control uses IR signals to control all equipment except for the receiver (when using UHF). IR signals travel less than 40 feet, and <i>cannot</i> go through walls or other solid objects. You <i>must</i> point the remote control directly at the front of the equipment, with <i>no</i> objects to block the signal path.</li> <li>If the batteries are missing or dead, put fresh AAA-size batteries in. If the remote has fresh batteries, check whether you put them in the right way. If you didn't, take them out and put them in the right way.</li> <li>Make sure you set up the remote to control all the equipment you want to use. See <i>Program the Remote to Control Your TV</i> on page C-4 and <i>Programming for Other Equipment</i> on page 2.</li> <li>Make sure you follow the steps for <i>Learning From Another Device's Remote</i> on page 9 to teach your DISH Network remote the button function(s) to control your own equipment.</li> </ul>
The receiver does things even though you didn't press any remote control buttons.	UHF signals from a neighbor's remote may be controlling your receiver.	See <i>Avoiding Remote Conflicts</i> on page 13 for instructions to correct this problem.
Your picture is snowy (or blue or black).	You have accidentally changed the channel on your TV.	Make sure your TV (and VCR, if one is connected) is tuned to the correct channel. Also try using the RECOVER button as described on page C-6.

What's Happening	What's Wrong	What You Can Do
Your remote control isn't working	<ul style="list-style-type: none"> <li>The remote control is in the wrong mode.</li> <li>You might be using the wrong remote control (TV1 or TV2).</li> <li>Your batteries are worn out.</li> <li>The remote control's UHF/IR switch is in the wrong position</li> </ul>	<ul style="list-style-type: none"> <li>Make sure the remote control is in the correct mode. For example, if you want to use the satellite receiver, put the remote control in SAT mode (see <i>Remote Control Modes</i> on page 1).</li> <li>Make sure you are using the correct remote control (TV1 or TV2) for your locations (multi-room receivers only).</li> <li>Change the batteries as described on page C-2.</li> <li>Check the UHF/IR switch setting as described on page 14.</li> </ul> <div>  <p>For all receivers <i>except</i> for the DISH Player-DVR 942, ViP® 222/222k, ViP622 and ViP722/722k DVR: leave the UHF/IR switch in the IR position.</p> </div>
When you press the remote control MUTE or VOLUME button, nothing happens.	<ul style="list-style-type: none"> <li>The remote control may not be set up.</li> <li>Maybe you're trying to control TV volume, but you set up the remote to control a tuner or amplifier in AUX mode.</li> </ul>	<ul style="list-style-type: none"> <li>See <i>Programming the Remote to Control Your TV</i> on page C-4 and <i>Programming for Other Equipment</i> on page 2.</li> <li>Set up the remote control to operate <i>either</i> TV volume <i>or</i> tuner/amplifier volume, whichever you want. See page 6.</li> </ul>
Your UHF Pro remote control does not work well from far away.	You may be experiencing interference from objects near your receiver antenna.	<ul style="list-style-type: none"> <li>Make sure the UHF antenna is connected to the receiver and not touching anything else.</li> <li>Vary the tilt angle of the receiver's UHF antenna. Locate the UHF antenna tip away from other electronics equipment or metal surfaces, even if separated by wooden shelving.</li> <li>Move the receiver to different locations. For best results, place the receiver as high as possible, above all other equipment in your entertainment center.</li> <li>Place the UHF antenna outside the entertainment center by using a coaxial cable to connect it to the receiver.</li> <li>Move any nearby off-air antenna away from the UHF remote antenna. Do not place an off-air antenna on your receiver.</li> </ul>
Your PIP (Picture-In-Picture) button isn't working.	<ul style="list-style-type: none"> <li>Your receiver doesn't use PIP.</li> <li>Your receiver isn't in Single Mode.</li> </ul>	<ul style="list-style-type: none"> <li>Upgrade to a receiver with this feature.</li> <li>Press the MODE button on the front panel (if available).</li> </ul>



## LIMITED WARRANTY



This *Limited Warranty* is a legal document. Keep it in a safe place. Remember to keep your *Sales Receipt* for warranty service. We will consider any items you return without a copy of the *Proof of Purchase* to be out of warranty.

This warranty extends *only* to the original user (“you,” “your”) of the DISH Network remote control and is *limited* to the purchase price of the remote control. EchoStar Technologies L.L.C., formerly known as EchoStar Technologies Corporation, and its affiliated companies (“we,” “our,” “us”) warrant this remote control against defects in materials or workmanship as follows.

For one year from the original date of purchase, if we find the remote control is defective subject to the limits of this warranty, we will replace the remote at no charge for parts or labor. We warrant any such work done against defects in materials or workmanship for the remaining part of the original warranty period.

This warranty *does not cover* installation of the DISH Network System; consumer instruction; physical set up or adjustment of any consumer electronic equipment; remote control batteries; signal reception problems; loss of use of the equipment; unused programming charges due to equipment malfunction; cosmetic damage; damage due to lightning, electrical or telephone line surges, fire, flood, or other acts of Nature; accident; misuse; abuse; repair or alteration by other than our factory service; negligence; commercial or institutional use; improper or neglected maintenance; equipment sold AS IS or WITH ALL FAULTS; equipment removal or reinstallation; shipping damage if the equipment was not packed and shipped in the manner we prescribe; nor equipment purchased, serviced, or operated outside the contiguous United States of America.

REPLACEMENT AS PROVIDED UNDER THIS WARRANTY IS YOUR EXCLUSIVE REMEDY. WE SHALL NOT BE HELD LIABLE FOR ANY INCIDENTAL OR CONSEQUENTIAL DAMAGES FOR BREACH OF ANY EXPRESSED OR IMPLIED WARRANTY ON THIS DEVICE, NOR FOR ANY INCIDENTAL OR CONSEQUENTIAL DAMAGE RESULTING FROM THE USE OF, OR INABILITY TO USE, THIS DEVICE. UNDER NO CIRCUMSTANCES SHALL OUR LIABILITY, IF ANY, EXCEED THE PURCHASE PRICE PAID FOR THIS DEVICE. EXCEPT TO THE EXTENT PROHIBITED BY APPLICABLE LAW, ANY IMPLIED WARRANTY OF MERCHANTABILITY OR FITNESS FOR A PARTICULAR PURPOSE ON THIS DEVICE IS LIMITED IN DURATION TO THE DURATION OF THIS WARRANTY. WE RESERVE THE RIGHT TO REFUSE TO HONOR THIS WARRANTY IF WE DETERMINE ANY OF THE ABOVE EXCEPTIONS TO HAVE CAUSED THIS DEVICE NOT TO HAVE PERFORMED PROPERLY. THIS WARRANTY SHALL BE VOID IF ANY FACTORY-APPLIED IDENTIFICATION MARK, INCLUDING BUT NOT LIMITED TO SERIAL OR CONDITIONAL ACCESS NUMBERS, HAS BEEN ALTERED OR REMOVED. THIS WARRANTY SHALL ALSO BE VOID IF THE DEVICE HAS BEEN OPENED BY AN UNAUTHORIZED PERSON (with the exception of opening the battery cover).

This warranty gives you specific legal rights which may vary from state to state. Some states do not allow the exclusion or limitations of incidental or consequential damages, or allow limitations on the duration of an implied warranty, so those limitations may not apply to you.

## DISH NETWORK'S EXCHANGE PROGRAMS

DISH Network offers two options if you need to replace your remote control; the Advanced Exchange Program and the Post Receipt Exchange Program.

## Advance Exchange Program

The Advanced Exchange Program allows you to have a replacement remote shipped immediately to you. Depending upon where you live, the remote should arrive within 3 to 5 business days. You will not have to return your defective remote to DISH Network using this program.

A shipping charge will be applied for shipping the replacement remote. This is a one-time fee based on DISH Network's competitive bulk shipping rates (additional charges may apply outside the continental U.S.). This fee will be charged to your billing account or valid credit card.

## Post Receipt Exchange Program

The Post Receipt Exchange Program does require that you send DISH Network the defective remote control at your cost to determine if the equipment is covered under warranty. To provide faster service, upon receipt of your equipment you will be shipped a replacement. Your original equipment will not be available for return.

If your equipment is not covered under warranty and can be repaired, your billing account or credit card will be charged the standard repair fee for the replacement. If damage to the defective equipment is found, which DISH Network in its sole discretion determines has voided the warranty, or makes the equipment unrepairable, your billing account or credit card will be charged the market price of the replacement.

## ACCESSORY WARRANTY

An accessory is any DISH Network branded equipment, displaying the DISH Network logo, excluding the receiver, Smart Card, cables and hookups, and non-mechanical components. A one-year warranty becomes effective upon the activation of the DISH system or date of purchase, if bought separately. A proof of purchase is required to verify the purchase date. If an accessory has an expired warranty, no exchange will be issued. You may purchase replacement accessories from DISH Network or your local retailer.

## IF YOU NEED HELP

1. Review this *User Guide*.
2. See *Troubleshooting* on page 31.
3. Call the Customer Service Center at 1-800-333-DISH (3474). Have the date of purchase and your customer account number ready.
  - a. If the representative finds you should return the remote control, you'll get a telephone number to call for a Return Authorization (RA) number. *Before shipping* any equipment to us, you *must* get a Return Authorization number.
  - b. You *must* package returned equipment the right way. Follow the instructions the representative gives you.
  - c. Write the RA number in large, clearly visible characters on the *outside* of the shipping box used to return the equipment.  
*To avoid confusion and misunderstandings, we will return shipments without an RA number clearly visible on the outside of the box to you at your cost.*
  - d. We will:
    - Check the remote control, including whether it is covered under the warranty.
    - Replace any remote we find is defective with a new or refurbished remote, if the defective remote is covered under the warranty. We will ship the replacement remote at our expense.
    - If a defective remote is not covered under the warranty, we will tell you. We may assess you a flat rate charge for a replacement remote, including shipping and insurance.

## REGULATORY FACTORS

This device complies with Part 15 of FCC Rules. Operation is subject to the following two conditions:

1. this device may not cause harmful interference, and
2. this device must accept any interference received, including interference that may cause undesired operation.

Changes or modifications to this device may void your authority to operate this equipment.

This equipment has been tested and found to comply with the limits for a Class B digital device, pursuant to Part 15 of the FCC Rules. These limits are designed to provide protection against harmful interference in a residential installation. This equipment generates, uses and can radiate radio frequency energy and, if not installed and used in accordance with the instructions, may cause harmful interference to radio communications. However, there is no guarantee that interference will not occur in a particular installation. If this equipment does cause harmful interference to radio or television reception, which can be determined by turning the equipment off and on, the user is encouraged to try to correct the interference by one or more of the following measures:

- Re-orient or relocate the receiving antenna.
- Increase the separation between the equipment and receiver.
- Connect the equipment into an outlet on a circuit different from that to which the receiver is connected. Consult the dealer or an experienced radio/TV technician for help.



**For all your customer needs,  
call the Customer Service Center  
at 1-800-333-DISH(3474)**

**159263**