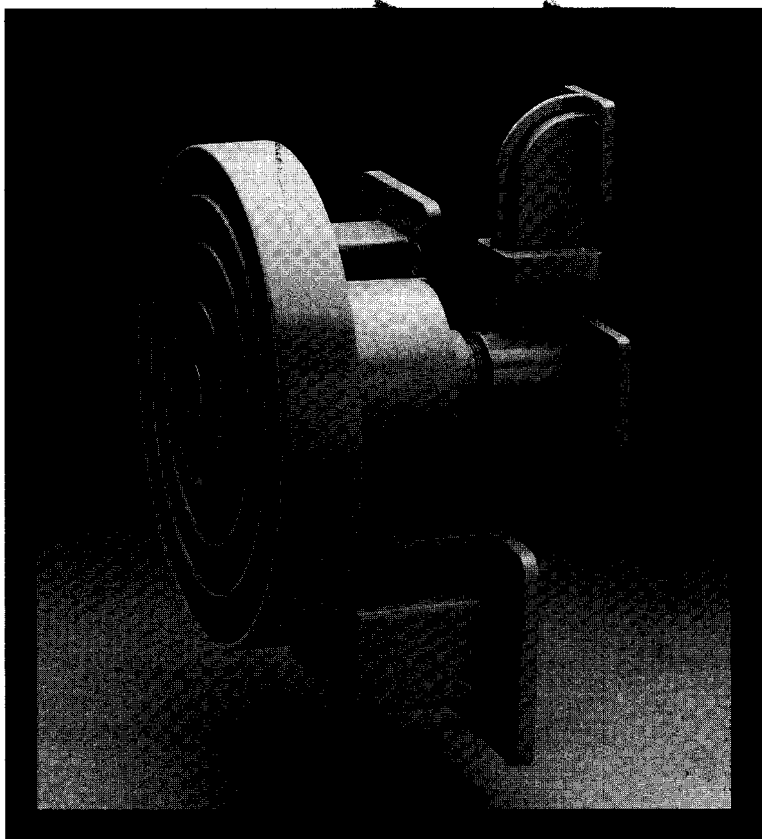


Bullseye™ II Feedhorn Instruction Manual



Bullseye II

Parts Lists

Description	Part No.
Bullseye	11-3179-1
Hardware Kit	59-2450-2
Throat Cover	36-2465-1
Manual	57-5081-1

Specifications

Size/Weight:	8.625" x 8.125" x 5.375" / 3 lbs. 0.5 oz.
Frequency Range:	C-Band: 3.7-4.2 GHz / Ku-Band: 11.70 10.95-12.75 GHz
VSWR:	C-Band: 1.6:1 / Ku-Band: 1.4:1
Isolation:	C-Band: 18 dB / Ku-Band: 25 dB
RF ports:	C-Band: WR229 / Ku-Band: WR75

Tuned 10-6-2011
10.95
10.95

Introduction

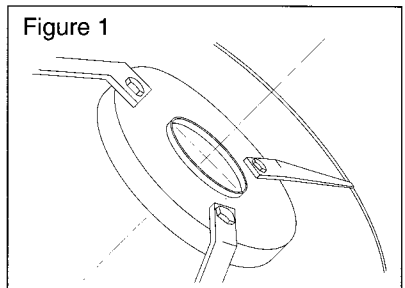
The Bullseye II feedhorn is designed to receive 3.7 to 4.2 GHz and ~~11.70~~ 10.95 to 12.75 GHz satellite signals from a single dish. It is compatible with all receivers and LNBs made for reception of these frequencies.

The Bullseye II feedhorn combines the functions of a Ku-band dual orthomode feedhorn and a C-band dual orthomode feedhorn in a single assembly. It is mounted at the focal point of the dish to receive both polarities of the C-band and Ku-band signals. This enables multiple satellite receivers to have access to all channels from C-band and Ku-band satellites.

Installation

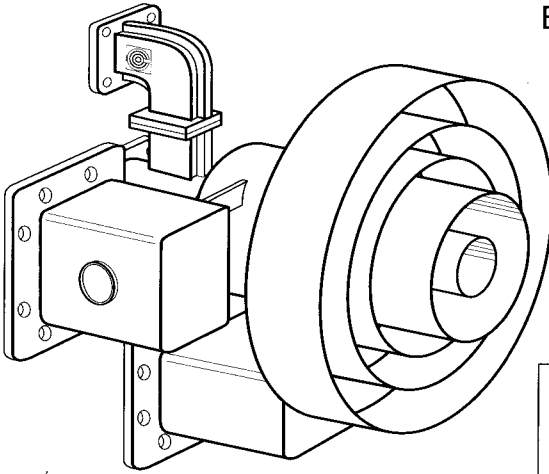
Before you install:

- Identify all parts enclosed
 - Fill out the warranty card and mail to Chaparral
 - Do not use any sealant on the flange surfaces
1. Mount the feedhorn to the feed support on the dish using the holes in the scalar rings (see Figure 1).
 2. Align the waveguide flanges parallel to and perpendicular to the polar axis of the dish. The polar axis is the vertical line through the dish when it is pointing south (see Figure 2).



Installation Instructions

Bullseye II Feedhorn



Refer to the dish installation manual for additional dish and feedhorn alignment information if necessary.

3. Adjust the scalar rings for the f/D ratio of your dish. For dishes of f/D less than .36, push the scalar rings all the way back to the stop on the hub. If your dish has an f/D of more than .36, set the scalar rings flush with the C-band horn.
4. Make sure the feedhorn is pointed at the center of the dish and is correctly positioned at the focal point. Refer to Figure 3 and the dish manufacturer's specifications for focal length.
5. The focal length is measured from the center of the dish to 1/16" inside the throat of the Ku-band waveguide (see Figure 4).
6. Install the throat cover.
7. Bolt the LNBs to the flanges, making sure the LNB waveguides are aligned with the feedhorn waveguides and the gaskets are properly seated.

Figure 2

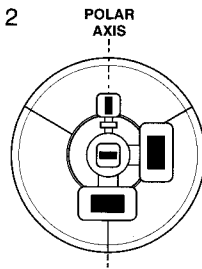


Figure 3

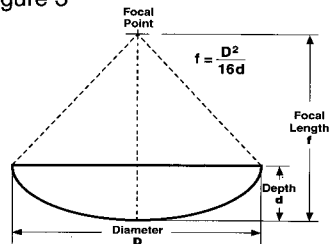
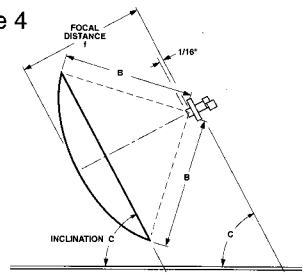
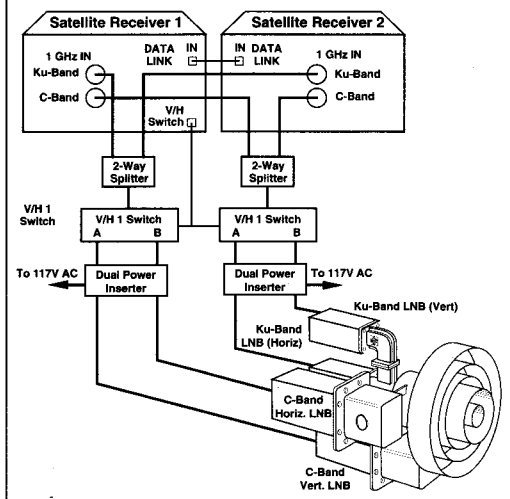


Figure 4



8. Connect 75 ohm coaxial cables to the RF outputs on the LNBs. Proper sealing of cable connectors is recommended.
9. Connect the LNB cables to the receiver as required. Figure 5 shows an example system using 1 GHz two-way splitters (P/N 11-1385-1) and V/H 1 Switches (P/N 11-1836-1). Power inserters are recommended to ensure the LNBs have proper operating voltages.

Figure 5



2 Year Limited Warranty

Chaparral Communications, Inc. (Chaparral) warrants that each product described herein will be free from defects in materials and workmanship for a period of two (2) years from the date of purchase. Chaparral agrees as its sole responsibility under this limited warranty, at its sole option either to repair or replace any product discovered to be defective within the warranty period, upon prompt notice of such defect. Warranty service may be obtained by contacting Chaparral Communications, Inc.

This limited warranty is not applicable to: (I) normal wear and tear; (II) abuse, unreasonable use, improper installation, mistreatment or neglect; (III) damage caused by the equipment or system with which the product is used; (IV) damage caused by modification or repair not made or authorized by Chaparral; or (V) theft, vandalism, fire, water or other peril.

The product must be properly packed and returned to Chaparral Communications, Inc. Cost of transportation, removal or reinstallation of the equipment will be paid by the purchaser.

This warranty and the remedies set forth herein are exclusive and in lieu of all other express or implied warranties (including any implied of merchantability or fitness for a particular purpose, which are disclaimed) and no other representations or claims shall be binding on or obligate Chaparral in any way. Any warranties applicable to this product are limited to the periods described above. In no event will Chaparral be liable for any special, incidental or consequential damages resulting from use or malfunction of this product or the equipment or system with which it is used, loss of revenue, or cost of replacement goods.

Some states do not allow limitations on the period of time an implied warranty lasts and / or the exclusion of limitation of special, incidental or consequential damages, so the above limitations and / or exclusions or limitation of liability may not apply to you. This warranty gives you specific legal rights, and you may have other rights which vary from state to state.



950 S. Bascom Avenue, Ste 2113, San Jose, CA 95128
Tel: (408) 559-1420 • Fax: (408) 559-1760

© Copyright 1995, Chaparral Communications, Inc.

™ Bullseye is a trademark of Chaparral Communications, Inc. ® Polarotor is a registered trademark of Chaparral Communications, Inc.
Specifications and procedures are subject to change without notice.